

Statistics of mentally disordered offenders 1999

21/00

England and Wales

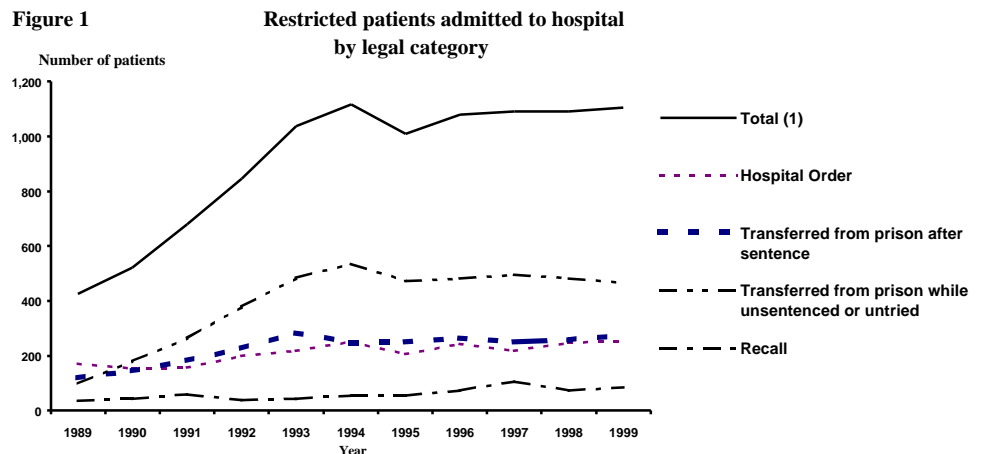
Steven Johnson and Ricky Taylor

November 2000

MAIN POINTS

This bulletin provides information about patients subject to a restriction order (restricted patients) admitted to, detained in or discharged from hospitals:

- The number in hospital at the end of 1999 was 2,857. This was 4 per cent more than the previous year, similar to the average yearly increase in recent years.
- The number admitted under hospital orders rose from 248 in 1998 to 253 in 1999, while the number recalled to hospital increased from 74 to 84. The number transferred from prison to hospital increased from 740 in 1998 to 742 in 1999.
- The total number admitted to hospitals was 1,113 in 1999. This was 22 (or 2 per cent) more than the previous year and just below the peak of 1,117 in 1994.
- The number of restricted patients released into the community was 310 in 1999, 39 less (down 11 per cent) than the previous year (349).



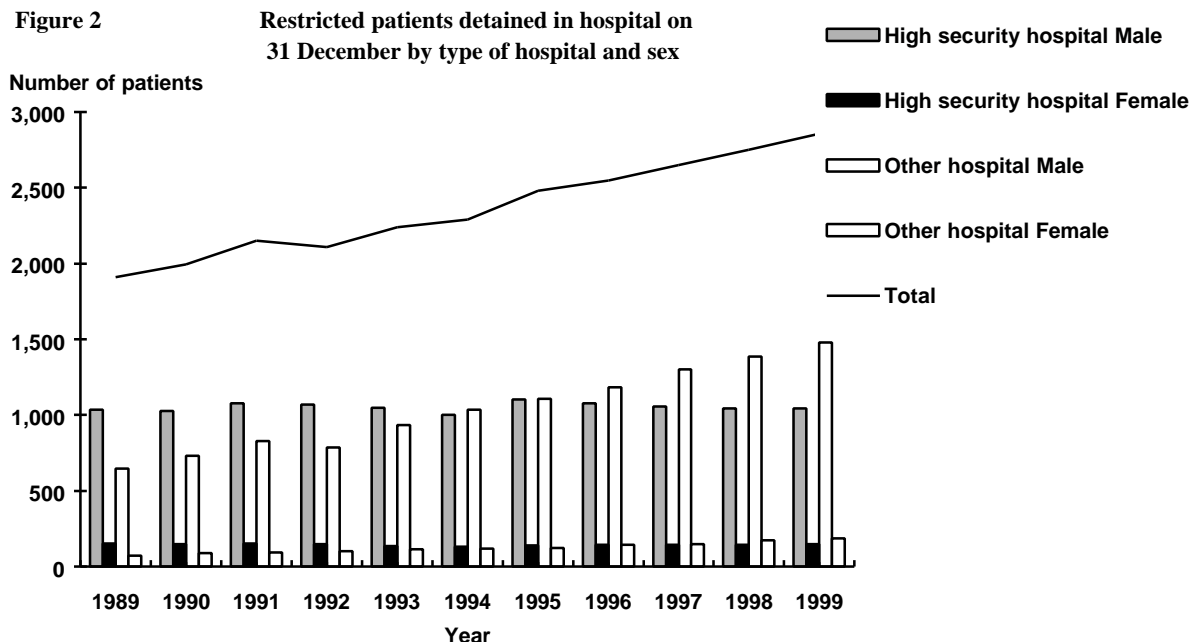
(1) Transfers from Scotland and Northern Ireland are included in the total

Introduction

1 This bulletin provides information about restricted patients admitted to, detained in or discharged from hospitals (Note 3) between 1989 and 1999 under mental health legislation (Notes 7, 8 and 9). It also gives information on the admission to hospital of mentally disordered offenders not subject to restriction orders (unrestricted patients) (Note 1). Further information on the operation of hospital orders with restrictions, including a follow-up study of discharged restricted patients, is given in Home Office Research Study 186.

Population and admission of restricted patients (tables 1 - 15 and figure 2)

Total numbers detained and admitted



2 There were 2,857 restricted patients detained in hospitals on 31 December 1999 (Note 3). This represents a 4 per cent increase on the 1998 figure, similar to the average yearly increase over the previous ten years.

3 The number of restricted patients in *high security hospitals* (Note 3) increased slightly (by less than 1 per cent) between 1998 and 1999 to 1,133, while those in *other hospitals* rose by 7 per cent. Over the last decade numbers have remained around 1,200 in *high security hospitals*, while those in *other hospitals* increased from 722 in 1989 to 1,664 in 1999. As a result, the proportion of restricted patients who were in *high security hospitals* fell from 62 per cent to 42 per cent over this period. The proportion of female patients has remained relatively stable between 1989 and 1999, accounting for between 11 and 12 per cent of the population in each year.

4 Between 1989 and 1999 admissions of restricted patients to hospital almost trebled from 437 to 1,113 patients. The number of admissions grew to a peak in 1994 (1,117) and has since fluctuated a little below this level. Admissions in 1999 increased from 1,091 to 1,113 (or 2 per cent). The number of patients admitted to *other hospitals* in 1999, 998, was just over 2 per cent up on the previous year, while admissions to *high security hospitals* equalled 115 in 1999, two less than the previous year. (See Note 13 for the definition of an admission).

Legal category (tables 3 - 7 and figures 1 and 3)

Legal category refers to the particular section of mental health legislation under which patients are detained (see Notes 7 and 8 for details of the legislation).

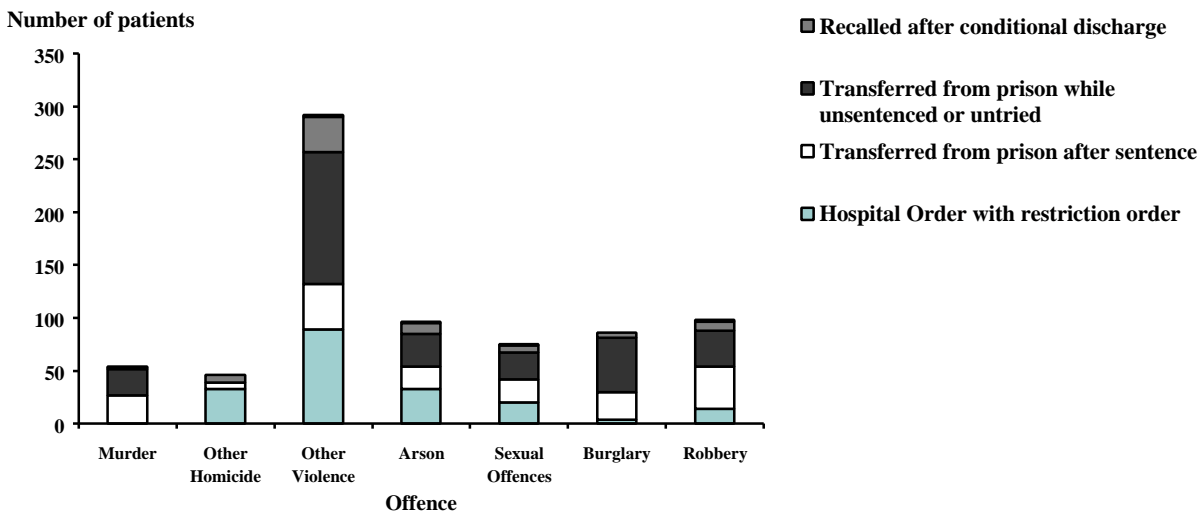
5 The overall figure for transfers from prison to hospital rose more than threefold between 1989 and 1994, but has remained relatively stable since. The figure for admissions after sentence was greatest in 1993, at 284; for 1999 it was 276. The number of unsentenced or untried prisoners transferred from prison increased more than fivefold between 1989 and 1994, from 98 to 536. 466 were transferred in 1999, accounting for 42 per cent of all admissions.

6 The number of restricted patients admitted to hospital in 1999 as a result of a court order was 253, 2 per cent greater than in 1999. The number recalled in 1999 was 84, an increase of 10 (or 14 per cent) on the previous year.

7 The legal category under which patients were admitted varied by type of offence. The majority of those admitted under hospital orders were convicted of or charged with violence against the person (47 per cent). The proportion for all other legal categories was 31 per cent. Table 5 shows that no patients were admitted under section 48 (transfer from prison prior to sentence or trial) for homicides other than murder and conversely no patients were admitted under a hospital order for murder. A hospital order is not a sentencing option for somebody convicted of murder (see Note 5 for further explanation).

8 Between 1993 and 1999 the proportion of restricted patients detained in hospital who had been transferred from prison (either after sentence or while unsentenced or untried) has remained relatively stable between 20 per cent and 24 per cent (20 per cent in 1999). Similarly, the proportion of patients held under hospital orders has fluctuated at around 65 per cent between 1993 and the end of 1999, despite numbers increasing in absolute terms over this period by 27 per cent (Table 6).

Figure 3 Restricted patients admitted to hospital by offence and legal category



Type of mental disorder (tables 4, 7 - 9, 12 - 13 and 15)

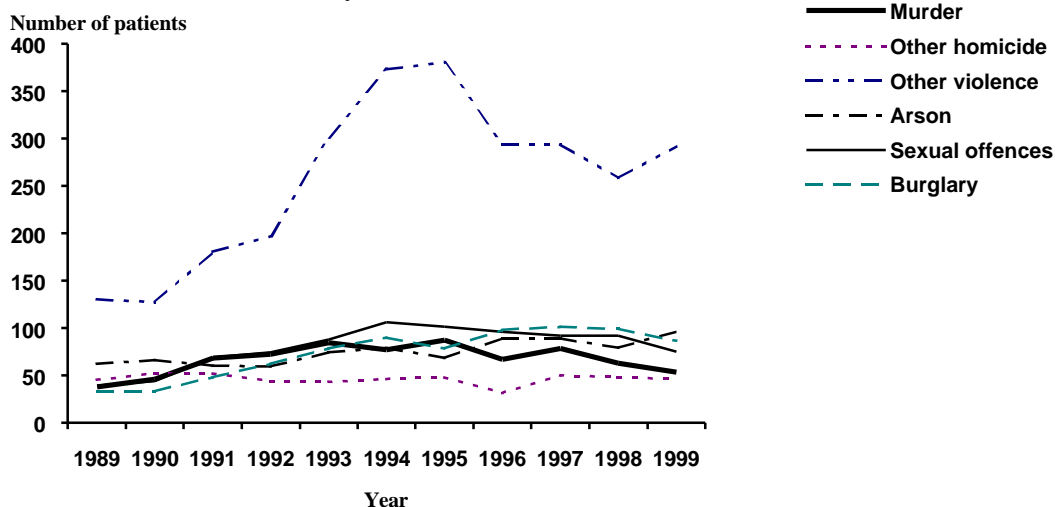
9 As in previous years, most restricted patients detained in hospital at the end of 1999 were diagnosed as having a *mental illness (with or without other disorders)*, 72 per cent (see Note 4). An additional 14 per cent were diagnosed as suffering from some form of psychopathic disorder.

10 Between 1989 and 1999 the proportion of restricted patient admissions who were suffering from *mental illness (with or without other disorders)* increased from 78 per cent to 90 per cent. This was mainly due to the large increase over this period in the proportion of hospital admissions transferred from prison. It should be noted that unsentenced or untried prisoners transferred from prison must be in urgent need of treatment and can only be classified as *mentally ill*, or having *severe mental impairment*. Excluding these transfers, the proportion of patients admitted in 1999 with a mental illness was 85 per cent. Conversely, the proportion of admitted patients suffering from a psychopathic disorder (with or without psychopathic disorder) fell from 13 per cent in 1989 to 3 per cent in 1999.

Type of offence (tables 5, 10 - 13 and figure 4)

11 Among admissions in 1999, the largest single group (some 35 per cent) were those convicted of, or charged with, acts of violence against the person, including homicide. However, the proportion has fallen from 48 per cent in 1989. The number of restricted patients admitted having been convicted of, or having been charged with, sexual offences has grown from 39 in 1989 to 75 in 1999 although the numbers have fallen from 95 in 1995. Admissions for burglary increased from 33 in 1989 to 86 in 1999, while those for robbery grew from 30 to 97. The proportion of patients admitted for either burglary or robbery increased from 14 per cent in 1989 to 16 per cent in 1999. The number of those admitted for arson rose from 78 in 1998 to 96 in 1999, higher than in previous years.

Figure 4 Restricted patients admitted to hospital by selected offences



12 In 1999 the number of patients aged 21 to 39 admitted to hospital (775) accounted for 70 per cent of total admissions. Among patients in the older age group (i.e. those aged 40 or over) violence against the person and sexual offences were more common than in the younger age group. Of those admitted suffering from a psychopathic disorder 45 per cent were convicted of or charged with violent offences in 1999. Arson and Sexual offences were more common among the small number with a *mental impairment* or *severe mental impairment* (both accounting for 7 offences out of 28 admissions).

13 Among restricted patients detained in hospital at the end of 1999, 51 per cent (1,467) had been convicted of, or charged with, acts of violence against the person. In 233 of these cases the offence was murder and in 370 it was other homicide. 13 per cent of the restricted population had been convicted of, or charged with, sexual offences and 12 per cent arson. Among the sentenced population violent offences were the most common for patients suffering from *mental illness*, while sexual offences accounted for the highest proportion of offences for those with mental impairment.

Period in hospital (tables 14 and 15)

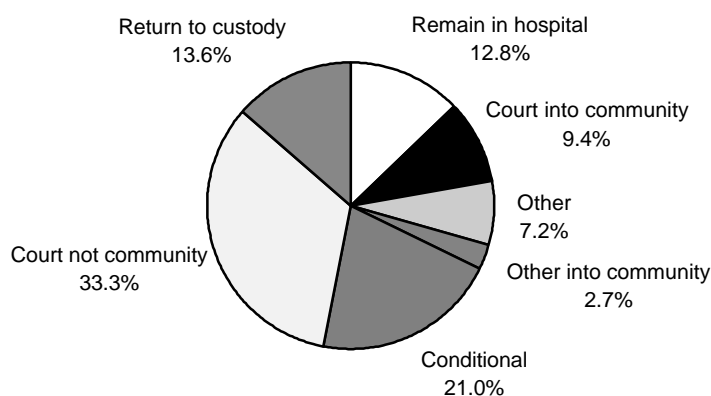
14 Among unsentenced or untried prisoners detained at the end of 1999 36 per cent had spent under 3 months in hospital before returning to prison or to court for trial or sentence. Only 12 out of 191 unsentenced or untried prisoners (or 6 per cent) were held in *high security hospitals*. For categories of patients other than unsentenced or untried prisoners, 53 per cent of those in *high security hospitals* had spent over 10 years in hospital in contrast to 14 per cent of those in *other hospitals*. Conversely, only 9 per cent of the *high security hospital* population had spent under 2 years in hospital compared to 32 per cent of those in *other hospitals*. This pattern reflects the more long term specialised treatment offered in the *high security hospitals*, and the fact that patients are often moved to *other hospitals* towards the end of their period of detention.

15 Of those detained under other legal categories in all hospitals, approximately half of those detained had spent less than 5 years in hospital (see Note 14 for the definition of time spent in hospital for the other legal categories). Of those suffering from a *psychopathic* disorder, 53 per cent had spent more than 10 years in hospital, compared to 42 per cent of those suffering a form of *mental impairment* and only 24 per cent of those suffering from *mental illness (with or without other disorders)*.

Discharges and disposals of restricted patients (table 16 and figure 5)

16 There were 938 patients discharged or disposed of in 1999 (Note 6), twice the corresponding figure (461) in 1990 but similar to the number in recent years. The increase in the number of discharges or disposals over this period was because of the large increases in admissions to hospital from prison in the years 1989 to 1993. Since 1993 transfers from prison to hospital have been consistent at about 750 a year. Those transfers have been particularly of unsentenced or untried prisoners, some of whom will return to custody on discharge from hospital. Of those patients originally transferred from prison after sentence, 128 were returned to custody to resume sentence in 1999; the equivalent figure in 1989 was 46. 43 per cent of all discharges or disposals in 1999 involved unsentenced or untried prisoners who were dealt with by the courts. 310 patients were discharged into the community in 1999, 34 fewer than the previous year.

Figure 5 Discharge/disposal of patients in 1999



17 A conditional discharge may be authorised by either the Secretary of State or a Mental Health Review Tribunal (Note 9). Substantially more are authorised by Tribunal (82 per cent in 1999) than by the Secretary of State. The total number of conditional discharges has fluctuated from year to year, with an average of around 175 over the last 10 years. There were 197 conditional discharges in 1999, accounting for 64 per cent of those discharged into the community. Around a third were discharged into the community by the courts following trial or sentence. The majority of patients detained in *high security hospitals* are transferred to *other hospitals* before being discharged into the community.

Reconvictions of restricted patients (table 17 and table 17a)

18 Between 1984 and the end of 1997, 1,703 patients were conditionally discharged for the first time. Fewer than 1 in 10 (9 per cent) of those discharged were reconvicted of a standard list offence (see Note 15) within 2 years of discharge. Included within this group were 1 per cent whose reconviction was for a grave offence (see Note 15). Since 1987 reconviction rates have been noticeably lower, averaging 7 per cent for a standard list offence.

19 Five year reconviction rates (which relate to those released between 1984 and 1994 because of the longer follow-up period) were 17 per cent for standard list offences, including 3 per cent for grave offences.

20 The main emphasis of the restriction order is on the prevention of serious harm to the public. Reconviction rates are therefore important in measuring their effectiveness. Table 17a compares the two-year reconviction rates of restricted patients for sexual and violent offences against the rate that would be expected of discharged prisoners and those sentenced to community penalties who match the restricted patients on criminal history and demographic characteristics.

21 Due to the small number of offenders re-convicted for a sexual or violent offence within a two-year follow up period, and the relatively small number that are discharged in any given year, numbers are combined to produce a rolling average over five years. Between 1993 and 1997 14 restricted patients were re-convicted for a sexual or violent offence within two years of discharge (or 2 per cent). This compares to an expected reconviction rate of 11 per cent. The actual reconviction rate is therefore 9 percentage points lower than would be expected of discharged prisoners and those sentenced to community penalties who match the restricted patients on criminal history and demographic factors.

Admission of unrestricted patients (table 18)

22 In 1999, of the 745 patients admitted to hospital under an unrestricted hospital order, 31 per cent had committed offences involving violence against the person. Excluding offences of violence against the person, the most common offences were criminal damage (18 per cent), summary offences (11 per cent), theft and handling stolen goods (10 per cent) and other indictable offences (10 per cent). The total number of admissions in 1999 were virtually the same as the previous year falling from 748 to 745. The number remains close to the average for the last 11 years.

Table 1 Restricted patients detained in hospital by type of hospital and sex

England and Wales 31 December		Number of patients										
Type of hospital	Sex	1989	1990	1991	1992 ⁽¹⁾	1993 ⁽¹⁾	1994 ⁽¹⁾	1995	1996	1997	1998 ⁽²⁾	1999
High security hospital ⁽³⁾	Male	1036	1027	1076	1070	1050	1001	1105	1077	1058	1043	1044
	Female	151	150	152	148	137	131	140	144	143	145	149
	All patients	1187	1177	1228	1218	1187	1132	1245	1221	1201	1188	1193
Other hospitals ⁽³⁾	Male	649	730	827	788	933	1036	1109	1182	1300	1387	1479
	Female	73	89	96	101	117	120	124	146	149	174	185
	All patients	722	819	923	889	1050	1156	1233	1328	1449	1561	1664
All hospitals	Male	1685	1757	1903	1858	1983	2037	2214	2259	2358	2430	2523
	Female	224	239	248	249	254	251	264	290	292	319	334
	All patients	1909	1996	2151	2107	2237	2288	2478	2549	2650	2749	2857

(1) The method of producing these statistics was changed in 1994 and the figures for 1992 and 1993 were then revised. There was also change in methodology in 1995 and figures for 1994 were revised following additional checks (see Notes 10-12).

(2) 1998 figures are revised from those published in bulletin 07/00 to reflect a small number of late notifications of patient movements.

(3) See Note 3 for definition.

Table 2 Restricted patients admitted⁽¹⁾ to hospital by type of hospital and sex

England and Wales		Number of patients										
Type of hospital	Sex	1989	1990	1991	1992	1993	1994	1995	1996	1997	1998	1999
High security hospital ⁽²⁾	Male	133	108	122	136	141	121	143	116	86	105	96
	Female	21	23	12	13	9	15	9	20	21	12	19
	All patients	154	131	134	149	150	136	152	136	115	117	115
Other hospitals ⁽²⁾	Male	256	363	498	621	807	906	783	849	891	871	906
	Female	27	48	48	76	79	75	73	94	94	103	92
	All patients	283	411	546	697	886	981	856	943	955	974	998
All hospitals	Male	389	471	620	757	948	1027	926	965	977	976	1002
	Female	48	71	60	89	88	90	82	114	115	115	111
	All patients	437	542	680	846	1036	1117	1008	1079	1092	1091	1113

(1) In 1999 92 patients were admitted more than once in the year. 62 of these were cases where a section 48 transfer to hospital was followed by a hospital order. In all except 12 cases the multiple admission involved an initial section 48 transfer (See Note 13).

(2) See Note 3 for definition.

Table 3 Restricted patients admitted⁽¹⁾ to hospital by legal category⁽²⁾

England and Wales										Number of patients	
Legal category	1989	1990	1991	1992	1993	1994	1995	1996	1997	1998	1999
Hospital order with restriction order	170	154	156	198	218	251	205	243	218	248	253
Transferred from Prison Service establishment after sentence	120	145	182	227	284	249	250	264	251	258	276
Transferred from Prison Service establishment while unsentenced or untried	98	180	264	378	483	536	473	481	495	482	466
<i>All transferred from prison</i>	218	325	446	605	767	785	723	745	746	740	742
Recalled after conditional discharge	36	43	60	38	43	55	56	74	106	74	84
Transferred from Scotland, Northern Ireland etc	-	-	-	-	1	1	2	-	-	-	-
Unfit to plead	9	17	6	3	4	18	16	12	17	24	28
Not guilty by reason of insanity	4	3	9	1	3	7	6	5	5	6	6
All legal categories	437	542	680	846	1036	1117	1008	1079	1092	1091	1113

(1) See footnote(1) of Table 2.

(2) See Note 7 for details of the legislation.

Table 4 Restricted patients admitted to hospital by legal category⁽¹⁾ and type of mental disorder⁽²⁾

England and Wales 1999								Number of patients
Legal category ⁽¹⁾	Mental illness	Mental illness with other disorder	Psycho-pathic disorder	Mental impairment	Mental impairment with psycho-pathic disorder	Severe mental Impairment	Not known	All mental disorders
Hospital order with restriction order	212	9	15	17	-	-	-	253
Transferred from Prison Service establishment after sentence	248	8	16	4	-	-	-	276
Transferred from Prison Service establishment while unsentenced or untried	465	-	-	-	-	1	-	466
<i>All transferred from prison</i>	713	8	16	4	-	1	-	742
Recalled after conditional discharge	65	3	4	5	1	-	-	84
Transferred from Scotland, Northern Ireland etc	-	-	-	-	-	-	-	-
Unfit to plead	4	-	-	2	-	-	22	28
Not guilty by reason of insanity	-	-	-	-	-	-	6	6
All legal categories	994	20	35	28	1	1	34	1113

(1) See Note 7 for details of sections of the legislation.

(2) See Note 4 for classification of mental disorder.

Table 5 Restricted patients admitted to hospital by legal category and offence

Legal category	England and Wales 1999											
	Violence against the person			Sexual Offences	Burglary	Robbery	Theft and handling stolen goods	Fraud and forgery	Criminal damage		Other indictable/summary offences	All offences
	Murder ⁽¹⁾	Other ⁽²⁾ homicide	Other ⁽²⁾ violence						Arson	Other		
Hospital order with restrictions	-	33	89	20	4	14	4	-	33	8	48	253
Transferred from Prison Service establishment after sentence	27	6	43	22	26	40	9	2	21	10	70	276
Transferred from Prison Service establishment before sentence	25	-	125	25	51	34	10	2	31	48	115	466
<i>All transferred from prison</i>	52	6	168	47	77	74	19	4	52	58	185	742
Recalled after conditional discharge	1	7	33	7	5	8	2	-	10	3	8	84
Transferred from Scotland, Northern Ireland etc	-	-	-	-	-	-	-	-	-	-	-	-
Unfit to plead	-	-	1	1	-	1	-	-	1	-	24	28
Not guilty by reason of insanity	-	-	1	-	-	-	-	-	-	-	5	6
All legal categories	53	46	292	75	86	97	25	4	96	69	270	1113

(1) Patients admitted under hospital orders would rarely register a murder offence, as this carries a mandatory life sentence which would usually be followed by removal to prison.

(2) No patients transferred from prison to hospital before sentence or trial were admitted for "other homicide", because the offence registered for these patients is based on the original indictment by the police, which would invariably be for murder in homicide cases. The actual offence would not be established until after the court case.

Table 6 **Restricted patients detained in hospital by legal category⁽¹⁾**

England and Wales 31 December

Legal category	1993	1994	1995	1996	1997	1998	1999
Hospital order with restriction order	1461	1525	1548	1626	1680	1758	1853
Transferred from Prison Service establishment after sentence	345	342	402	389	368	402	404
Transferred from Prison Service establishment while unsentenced or untried	171	157	183	181	178	168	169
<i>All transferred from prison</i>	516	499	585	570	546	570	573
Recalled after conditional discharge	99	100	195	213	277	266	271
Transferred from Scotland, Northern Ireland etc	5	6	7	3	3	3	3
Unfit to plead	100	103	97	93	103	110	119
Not guilty by reason of insanity	20	23	24	25	23	25	23
Other	36	32	22	19	18	17	15
All legal categories	2237	2288	2478	2549	2650	2749	2857

(1) See Note 7 for details of the legislation.

Table 7 Restricted patients detained in hospital by legal category⁽¹⁾ and type of mental disorder⁽²⁾

England and Wales 31 December 1999							Number of patients		
Legal category ⁽¹⁾	Mental illness	Mental illness with other disorders	Psychopathic disorder	Mental impairment	Mental impairment with psycho. order	Severe mental impairment	Not known	All mental-disorders	
Hospital order with restriction order	1275	113	287	142	26	9	1	1853	
Transferred from Prison Service establishment after sentence	296	28	59	16	5	-	-	404	
Transferred from Prison Service establishment before sentence	169	-	-	-	-	-	-	169	
<i>All transferred from prison</i>	465	28	59	16	5	-	-	573	
Recalled after conditional discharge	168	7	49	25	1	-	21	271	
Transferred from Scotland, Northern Ireland, etc	1	-	1	-	-	-	1	3	
Unfit to plead	12	1	-	3	-	2	101	119	
Not guilty by reason of insanity	3	-	-	-	-	-	20	23	
Other	6	-	-	-	-	1	8	15	
All legal categories	1930	149	396	186	32	12	152	2857	

(1) See Note 7 for details of sections of Acts.

(2) See Note 4 for classification of mental disorder.

Table 8 Restricted patients detained in hospital by type of mental disorder⁽¹⁾, age and sex

Type of mental disorder	England and Wales 31 December 1999												Number of patients	
	Age on 31 December												All ages	
	under 17		17-20		21-39		40-59		60+		M	F	Total	
	M	F	M	F	M	F	M	F	M	F	M	F	Total	
Mental illness	1	-	45	9	990	121	611	48	96	9	1743	187	1930	
Mental illness with other disorders	-	-	2	1	79	23	29	12	2	1	112	37	138	
Psychopathic disorder	-	-	8	1	151	57	139	16	23	1	321	75	383	
Mental impairment	-	-	14	-	87	10	56	6	13	-	170	16	165	
Mental impairment with psychopathic disorder	-	-	1	-	22	2	7	-	-	-	29	3	31	
Severe mental impairment	-	-	-	-	3	-	6	1	2	-	12	-	12	
Not known	-	-	5	-	55	5	50	4	25	4	136	16	142	
All mental disorders	2	-	75	11	1387	218	898	90	161	15	2523	334	2857	

(1) See Note 4 for classification of mental disorder.

Table 9 Restricted patients admitted⁽¹⁾ to hospital by type of mental disorder⁽²⁾

Type of mental disorder	England and Wales											Number of patients	
	1989	1990	1991	1992	1993	1994	1995	1996	1997	1998	1999		
Mental illness	331	448	606	767	949	1004	898	954	975	987	994		
Mental illness with other disorders	11	14	7	18	17	23	21	31	25	23	20		
Psychopathic disorder	53	44	34	46	46	45	46	47	38	35	35		
Mental impairment	19	15	14	9	14	20	18	18	24	16	28		
Mental impairment with psychopathic disorder	5	1	-	-	2	2	4	6	4	2	1		
Severe mental impairment	4	-	2	2	2	5	-	3	4	-	1		
Not known	14	20	17	6	6	18	21	20	22	28	34		
All mental disorders	437	542	680	846	1036	1117	1008	1079	1092	1091	1113		

(1) See footnote (1) of Table 2.

(2) See Note 4 for classification of mental disorder.

Table 10 Restricted patients admitted⁽¹⁾ to hospital by offence⁽²⁾

England and Wales		Number of patients									
Offence	1989	1990	1991	1992	1993	1994	1995	1996	1997	1998	1999
Violence against the person:											
murder	38	46	68	72	84	77	87	67	78	66	53
other homicide	45	52	52	44	43	46	48	31	50	48	46
other violence	127	180	197	301	373	380	290	294	296	258	292
Sexual offences	39	44	69	74	88	106	101	96	92	95	75
Burglary	33	33	48	62	78	90	78	98	101	99	86
Robbery	30	39	74	79	102	109	101	89	107	115	97
Theft and handling stolen goods	18	20	26	35	24	46	18	30	22	15	25
Fraud and forgery	4	2	6	1	2	2	4	6	3	4	4
Criminal damage:											
arson	10	66	60	59	74	79	68	89	91	79	96
other	3	5	5	31	33	39	43	66	55	73	69
Other indictable offences and summary offences	26	47	71	82	118	132	166	206	193	236	266
All offences	432	534	676	840	1019	1106	1004	1072	1088	1088	1109
Civil prisoners	3	3	3	2	11	6	4	7	4	1	2
Immigration detainees	2	5	5	4	6	5	-	-	-	2	2
All patients	437	542	680	846	1036	1117	1008	1079	1092	1091	1113

(1) See footnote (1) of Table 2.

(2) See Note 5 for offence classification .

Table 11 Restricted patients admitted⁽¹⁾ to hospital by offence⁽²⁾ and age

England and Wales 1999

Number of patients

Offence	Age on 31 December					All ages
	under 17	17-20	21-39	40-59	60+	
Violence against the person:						
murder	-	6	28	18	1	53
other homicide	-	1	25	17	3	46
other violence	-	17	218	55	2	292
Sexual offences	-	13	43	15	4	75
Burglary	1	13	66	6	-	86
Robbery	2	13	68	14	-	97
Theft and handling stolen goods	-	6	18	1	-	25
Fraud and forgery	-	1	2	1	-	4
Criminal damage:						
arson	-	10	60	25	1	96
other	-	2	52	12	3	69
Other indictable offences and summary offences	1	16	189	48	5	266
All offences	4	98	773	215	19	1109
Civil prisoners	-	-	-	2	-	2
Immigration detainees	-	-	2	-	-	2
All patients	4	98	775	217	19	1113

(1) See footnote (1) of Table 2.

(2) See Note 5 for offence classification .

Table 12 Restricted patients admitted to hospital by offence and type of mental disorder

England and Wales 1999		Number of patients						
Offence	Mental illness	Mental illness with other disorders	Psycho-pathic disorder	Mental impairment	Mental impairment with psycho. order	Severe mental impairment	Not known	All mental-disorders
Violence against the person:								
murder	48	3	-	2	-	-	-	53
other homicide	39	2	3	2	-	-	-	46
other violence	262	7	12	6	1	1	3	292
Sexual offences	63	1	2	7	-	-	2	75
Burglary	82	-	1	1	-	-	2	86
Robbery	87	2	4	-	-	-	4	97
Theft and handling stolen goods	23	1	1	-	-	-	-	25
Fraud and forgery	3	-	1	-	-	-	-	4
Criminal damage:								
arson	80	-	6	7	-	-	3	96
other	65	-	2	1	-	-	1	69
Other indictable offences and summary offences	238	4	3	2	-	-	19	266
All offences	990	20	35	28	1	1	34	1109
Civil prisoners	2	-	-	-	-	-	-	2
Immigration detainees	2	-	-	-	-	-	-	2
All patients	994	20	35	28	1	1	34	1113

Table 13 Restricted patients detained in hospital by offence⁽¹⁾ and type of mental disorder⁽²⁾

England and Wales 31 December 1999

Number of patients

Offence	Sentenced ⁽³⁾						Section 48	All mental disorders
	Mental illness ⁽⁴⁾	Psycho-pathic ⁽⁵⁾ disorder	Mental impair-ment	Severe mental impair-ment	Not known	All mental disorders		
Violence against the person:								
murder	158	19	4	1	36	218	15	233
other homicide	280	66	20	-	3	369	1	370
other violence	641	102	35	1	38	817	47	864
Sexual offences	175	87	60	7	22	351	16	367
Burglary	49	13	2	-	2	66	19	85
Robbery	128	5	4	-	4	141	13	154
Theft and handling stolen goods	13	9	2	-	1	25	2	27
Fraud and forgery	1	1	-	-	-	2	3	5
Criminal damage:								
arson	191	79	43	2	15	330	5	335
other	64	20	6	-	3	93	21	114
Other indictable offences and summary offences	188	27	10	1	28	254	49	303
All patients	1888	428	186	12	152	2666	191	2857

(1) See Note 5 for offence classification.

(2) See Note 4 for classification of mental disorder.

(3) Includes hospital orders; transferred from prison service establishments after sentence; recalled after conditional discharge; transferred from Scotland, Northern Ireland etc; unfit to plead; not guilty by reason of insanity; and other.

(4) Includes 'mental illness with other disorders' shown in previous tables.

(5) Includes 'mental impairment with psychopathic disorder' shown in earlier tables.

Table 14 Restricted patients detained in hospital by period spent in hospital⁽¹⁾, type of hospital⁽²⁾ and sex.

England and Wales 31 December 1999

Number of patients

Period in hospital	Type of hospital						Total		
	high security			other			Total		
	M	F	T	M	F	T	M	F	T
Unsentenced or untried									
Under 3 months	3	-	3	61	5	66	64	5	69
3 to 6 months	2	-	2	40	7	47	42	7	49
Over 6 months	6	1	7	59	7	66	65	8	73
All unsentenced or untried	11	1	12	160	19	179	171	20	191
Other legal categories									
Under 2 years	86	16	102	426	49	475	512	65	577
Over 2 to 5 years	144	31	175	454	50	504	598	81	679
Over 5 to 10 years	245	30	275	257	48	305	502	78	580
Over 10 to 20 years	321	57	378	127	14	141	448	71	519
Over 20 to 30 years	171	13	184	46	4	50	217	17	234
Over 30 years	66	1	67	9	1	10	75	2	77
All other legal categories	1033	148	1181	1319	166	1485	2352	314	2666
All patients	1044	149	1193	1479	185	1664	2523	334	2857

- (1) Includes all previous periods in hospital except for the unsentenced or untried prisoners where the period starts from the last admission date. The database on which these periods are based is now complete and figures published in previous years will to some extent have underestimated time spent in hospital.
- (2) Patients may not have spent their entire period of detention in the type of hospital under which they are shown.

Table 15 Restricted patients detained in hospital by period spent in hospital⁽¹⁾ and type of mental disorder⁽²⁾

England and Wales 31 December 1999

Period in hospital	Mental illness	Mental illness with other disorders	Psychopathic disorder	Mental impairment	Mental impairment with psycho. order	Severe mental impairment	Not known	All mental-disorders
Unsentenced or untried								
Under 3 months	69	-	-	-	-	-	-	69
3 to 6 months	49	-	-	-	-	-	-	49
Over 6 months	73	-	-	-	-	-	-	73
All unsentenced or untried	191	-	-	-	-	-	-	191
Other legal categories								
Under 2 years	444	30	45	33	2	-	34	588
Over 2 to 5 years	484	48	59	37	10	3	33	674
Over 5 to 10 years	390	37	84	38	5	2	16	572
Over 10 to 20 years	288	29	115	40	12	4	32	520
Over 20 to 30 years	101	4	74	28	3	1	23	234
Over 30 years	32	1	19	10	-	2	14	78
All other legal categories	1739	149	396	186	32	12	152	2666
All legal categories	1930	149	396	186	32	12	152	2857

(1) Includes all previous periods in hospital except for the unsentenced or untried prisoners where the period starts from the last admission date. The database on which these periods are based is now more complete and figures published in previous years will to some extent have underestimated time spent in hospital.

(2) See Note 4 for classification of mental disorder.

Table 16 Discharges and disposals⁽¹⁾ of restricted patients, by type

England and Wales		Number of patients									
Type of discharge	1989	1990	1991	1992	1993	1994	1995	1996	1997	1998	1999
					(2)	(2)				(3)	
Discharge into the community											
Discharged conditionally under a warrant issued by the Secretary of State	69	47	48	47	40	43	24	35	29	34	35
Discharged conditionally by tribunal	98	86	101	118	129	147	140	136	163	173	162
Absolute discharges (first discharged) into the community	9	15	21	14	10	5	6	8
Discharges from court (S48(2)(a) and (b)) into the community	108	95	145	86	95	110	119	88
Other discharges into the community	33	37	76	33	48	52	32	45	35	17	17
All discharges into the community	200	170	225	315	327	408	296	321	342	349	310
Disposals (not discharged into the community)											
Remained in hospital no longer subject to restrictions	65	63	52	69	100	115	96	120	128	119	120
Returned to custody to resume sentence	46	77	72	78	165	122	92	156	122	93	128
Died	16	27	18	16	24	21	14	21	18	32	28
Remission of untried/unsentenced prisoners	39	50	48	37	31	46	35	39
Disposal at court (S48(2)(a) and (b)) not into the community	159	226	294	251	299	275	300	312
Other	81	124	158	4	6	10	2	4	9	3	1
All disposals (not discharged into the community)	208	291	300	365	571	610	492	631	598	582	628
All discharges and disposals	408	461	525	680	898	1018	788	952	940	931	938

(1) See Note 6 for definition.

(2) The method of producing these statistics was changed from 1992; the figures for earlier years may be understated (see Notes 10-12). Figures for 1994 were also revised following further checking.

(3) 1998 figures are revised from those published in bulletin 07/00.

Table 17 Restricted patients⁽¹⁾ reconvicted within 2 or 5 years⁽²⁾

England and Wales Number and percentage of persons

Year of first discharge	Total number of persons first discharged ⁽³⁾		Persons reconvicted since first release				Percentage of total number of persons first released			
			Grave offence		Standard list offence ⁽⁴⁾		Grave offence		Standard list offence ⁽⁴⁾	
			2 years	5 years	2 years	5 years	2 years	5 years	2 years	5 years
1984	147	(138)	1	5	21	35	1	4	15	25
1985	134	(124)	3	5	18	25	2	4	15	20
1986	91	(84)	2	6	13	28	2	7	15	33
1987	87	(77)	-	4	4	9	-	5	5	12
1988	94	(91)	1	2	5	8	1	2	5	9
1989	137	(127)	-	-	9	14	-	-	7	11
1990	100	(94)	2	3	8	12	2	3	9	13
1991	88	(81)	-	1	5	8	-	1	6	10
1992	147	(132)	1	5	7	23	1	4	5	17
1993	128	(114)	1	8	9	23	1	7	8	20
1994 ⁽⁵⁾	146	(138)	1	1	9	14	1	1	7	10
1995 ⁽⁵⁾	135	(126)	1	..	9	..	1	..	7	..
1996 ⁽⁵⁾	125	(98)	2	..	9	..	2	..	9	..
1997 ⁽⁵⁾	144	(118)	-	..	10	..	-	..	8	..
1984-1994	1,299	(1,200)	12	40	108	199	1	3	9	17
1984-1997	1,703	(1,542)	15	..	136	..	1	..	91	..
Discharged by Mental Health Review Tribunal										
1984	93	(89)	-	3	16	25	-	3	18	28
1985	81	(77)	2	4	16	19	3	5	21	25
1986	61	(57)	2	3	10	19	4	5	18	33
1987	49	(48)	-	2	3	6	-	4	6	13
1988	48	(48)	1	1	4	4	2	2	8	8
1989	78	(74)	-	-	6	9	-	-	8	12
1990	63	(58)	2	2	8	9	3	3	14	16
1991	62	(60)	-	1	4	7	-	2	7	12
1992	107	(94)	1	4	6	21	1	4	6	22
1993	98	(89)	1	7	8	19	1	8	9	21
1994 ⁽⁵⁾	111	(105)	1	1	5	7	1	1	5	7
1995 ⁽⁵⁾	115	(99)	1	..	8	..	1	..	8	..
1996 ⁽⁵⁾	101	(82)	2	..	7	..	2	..	9	..
1997 ⁽⁵⁾	123	(101)	-	..	10	..	-	..	10	..
1984-1994	851	(799)	10	28	86	145	1	4	11	18
1984-1997	1,190	(1,081)	13	..	111	..	1	..	10	..
Discharged with consent of Secretary of State										
1984	54	(49)	1	2	5	10	2	4	10	20
1985	53	(47)	1	1	2	6	2	2	4	13
1986	30	(27)	-	3	3	9	-	11	11	33
1987	38	(29)	-	2	1	3	-	7	3	10
1988	46	(43)	-	1	1	4	-	2	2	9
1989	59	(53)	-	-	3	5	-	-	6	9
1990	37	(36)	-	1	-	1	-	3	-	3
1991	26	(21)	-	1	1	1	-	5	5	5
1992	40	(38)	-	1	1	2	-	3	3	5
1993	30	(27)	-	1	1	4	-	4	-	15
1994 ⁽⁵⁾	35	(34)	-	-	4	7	-	-	12	21
1995 ⁽⁵⁾	20	(18)	-	..	1	..	-	..	6	..
1996 ⁽⁵⁾	24	(16)	-	..	2	..	-	..	13	..
1997 ⁽⁵⁾	21	(17)	-	..	-	..	-	..	-	..
1984-1994	448	(404)	2	13	22	52	-	3	5	13
1984-1997	513	(455)	2	..	25	..	-	..	5	..

(1) Discharged under Section 66 of the Mental Health Act 1959 or Section 42 or 73 of the Mental Health Act 1983.
(2) Figures prior to 1997 have been slightly revised from those published in bulletin 07/00.
(3) Excluding those not matched against the Offenders Index and those repatriated immediately on discharge.
(4) Including persons reconvicted of grave offences.
(5) From 1 January 1996, appearances at magistrates' courts for the offences of 'dangerous driving', driving or attempting to drive a motor vehicle while having a breath, urine or blood alcohol concentration in excess of the prescribed limit' and 'driving whilst disqualified from holding or obtaining a license' were added to the standard list.

Table 17a Restricted patients⁽¹⁾ actual and expected reconvicted rates for violent and sexual offences⁽²⁾

England and Wales			Number and percentage of persons			
Year of first discharge	Total number of persons first discharged ⁽³⁾		Number Persons reconvicted within two years of first release			
			Sexual or violent offences ⁽²⁾			
			Numbers reconvicted	Percentage reconvicted	Expected percentage reconvicted ⁽⁴⁾	Difference (Actual-predicted) ⁽⁵⁾
All discharged						
1984	147	(138)	7	5	13	-8
1985	134	(124)	8	6	11	-5
1986	91	(84)	6	7	12	-5
1987	87	(77)	1	1	10	-9
1988	94	(91)	2	2	10	-8
1989	137	(127)	4	3	11	-8
1990	100	(94)	2	2	13	-11
1991	88	(81)	2	2	11	-9
1992	147	(132)	2	2	11	-9
1993	128	(114)	4	4	11	-7
1994	146	(138)	2	1	12	-11
1995	135	(126)	3	2	12	-10
1996	125	(98)	5	5	11	-6
1997	144	(118)	-	-	10	-10
1984-1997	1,703	(1,542)	48	3	11	-9
1984-1988	553	(514)	24	5	11	-7
1985-1989	543	(503)	21	4	11	-7
1986-1990	509	(473)	15	3	11	-8
1987-1991	506	(470)	11	2	11	-9
1988-1992	566	(525)	12	2	11	-9
1989-1993	600	(548)	14	3	11	-9
1990-1994	609	(559)	12	2	12	-9
1991-1995	644	(591)	13	2	11	-9
1992-1996	681	(608)	16	3	11	-9
1993-1997	678	(594)	14	2	11	-9

- (1) Discharged under Section 66 of the Mental Health Act 1959 of Section 42 or 73 or the Mental Health Act 1983
- (2) Violent and sexual offences are defined in appendix 4A of Criminal Statistics England and Wales 1998 as offences under the category of violence against the person and sexual offences. Briefly, these offences include homicide, endangering life, aggravated burglary, robbery, kidnapping, child abduction, wounding, cruelty or neglect of children, abandoning child under 2 years, concealment of birth, buggery, rape, indecent assault, incest, procurement, abduction, bigamy and gross indecency with children.
- (3) Excluding those not matched against the Offenders Index and those repatriated immediately on discharge.
- (4) The expected reconviction rate is the rate of reconviction that would be expected of discharged prisoners and those sentenced to community penalties who match the restricted patients on criminal history and demographic characteristics.
- (5) The difference between the actual and predicted rates indicates whether the reconviction rate for restricted patients is above or below the level of reconviction expected of discharged prisoners and those sentenced to community penalties who match the restricted patients on criminal history or demographic factors.

Table 18 Persons given unrestricted hospital orders⁽¹⁾ by the courts, by offence⁽²⁾

England and Wales		Number of patients									
Offence	1989	1990	1991	1992	1993	1994	1995	1996	1997	1998	1999
Violence against the person:											
murder	-	-	-	-	-	-	-	-	-	-	-
other homicide	12	9	9	16	12	4	5	14	12	9	4
other violence	208	212	160	196	187	202	163	196	221	225	227
Sexual offences	49	42	50	42	56	52	45	45	42	45	50
Burglary	63	71	63	70	49	62	60	63	40	63	51
Robbery	21	22	32	38	40	47	32	41	29	42	38
Theft and handling stolen goods	93	85	82	74	69	75	53	74	57	54	73
Fraud and forgery	28	13	7	9	9	10	10	15	7	7	6
Criminal damage: arson/other	105	128	121	108	107	122	99	94	115	129	134
Other indictable offences	30	48	61	46	52	71	73	77	74	70	78
Summary offences	147	159	145	118	89	118	109	98	104	104	84
All offences	756	789	730	717	670	763	649	717	701	748	745

- (1) Section 37(1) and section 37(3) patients
[These figures are from Criminal Statistics].
- (2) See Note 5 for offence classification.

NOTES

1 The majority of information in this bulletin relates to restricted patients. Tables 1-17 cover admissions subject to restriction orders and directions under the mental health legislation. Such patients cannot be discharged without the consent of the Secretary of State or a Mental Health Review Tribunal. The bulletin also covers certain mentally disordered offenders whose discharge or transfer was not restricted - those receiving a hospital order from a court (Table 18). The Home Office does not monitor the movements of unrestricted patients after admission.

Background Information

2 The term *mentally disordered offenders* in this bulletin refers to persons who have been compulsorily admitted to hospital under Part V of the Mental Health Act 1959, Part III of the Mental Health Act 1983 or the Criminal Procedure (Insanity) Act 1964 as amended by the Criminal Procedure (Insanity and Unfitness to Plead) Act 1991 (see Legislative Framework below).

3 Mentally disordered offenders are held in psychiatric hospitals; in some cases only part of a hospital may be designated for the provision of psychiatric care. *High security hospitals* (known previously as *special hospitals*) hold patients detained under mental health legislation, who in the opinion of the Secretary of State for Health require treatment under conditions of high security because of their dangerous, violent or criminal propensities. There were four *high security hospitals* (Broadmoor, Rampton, Moss Side and Park Lane) until 18 February 1990 when Moss Side and Park Lane merged to become Ashworth. In this bulletin, the term *other hospital* refers to any other psychiatric hospital in England and Wales which admits mentally disordered offenders as well as other patients.

4 The Mental Health (Amendment) Act 1982 replaced the term *subnormality*, used in the Mental Health Act 1959, with *mental impairment* which covers a narrower range of patients. The provisions of the Act covering psychopathic disorder were also amended; this does not appear to have affected the admission of such patients. In tables categorising patients by mental disorder, those with mental impairment or severe mental impairment in addition to psychopathic disorder are shown under *psychopathic disorder*.

5 Offence categories used in this bulletin are as described in appendices 4A and 5 of Criminal Statistics, England and Wales 1998 (Cm 4649). Tables showing offences classify convicted patients by their principal offence, and unsentenced or untried prisoners by the principal offence with which they are charged. Prior to the 1993 publication *homicide* included *attempted murder* and *threats or conspiracy to murder*. These two offences are now included under *other violence*, and the change has been backdated to 1986. Table 5 shows that no patients were admitted under section 48 (transfer from prison prior to sentence or trial) for homicide other than murder because the offence registered for section 48 transfers is based on the original indictment by the police, which would almost always be for the offence of murder in homicide cases. The actual offence would not be established until the subsequent court case

(very often restricted patients indicted for murder are convicted of 'other homicide'). The table also shows that no patients were admitted under a hospital order for murder; a hospital order is not a sentencing option for somebody convicted of murder.

6 The term *discharge* refers to release into the community, by whatever means, with or without restrictions; the term *disposal* covers all other outcomes and movements (e.g. returns to custody) other than a transfer to another hospital in England and Wales.

Legislative Framework

7 The key legislation affecting this bulletin are the Mental Health Act 1959, the Mental Health Act 1983 and the Criminal Procedure (Insanity) Act 1964 as amended by the Criminal Procedure (Insanity and Unfitness to Plead) Act 1991. The 1959 Act was amended by the Mental Health (Amendment) Act 1982 and was then consolidated by the 1983 Act which was largely implemented on 30 September 1983. The provisions of the two Mental Health Acts are similar and references below are to the 1983 Act only. The equivalent sections in the 1959 Act were given in the bulletin covering 1989 and 1990 figures (Issue 29/91). The 1983 Act provides for:

- i. the admission to hospital by the courts of convicted offenders who satisfy certain conditions (sections 37(1) & (2));
- ii. the admission of an unconvicted offender to hospital by the courts where they are satisfied that the person concerned meets the criteria for admission and has done the act or made the omission with which charged (section 37(3));
- iii. the imposition of a hospital order on unsentenced prisoners in their absence and without conviction for an offence (section 51(5));
- iv. the recall to hospital, by order of the Secretary of State, of patients subject to restriction orders who were conditionally discharged (section 42(3));
- v. the admission to hospital, subject to restrictions, of patients ordered to be detained during Her Majesty's Pleasure (section 46);
- vi. the transfer to hospital, by order of the Secretary of State, of prisoners serving a sentence in a Prison Service establishment (section 47). Under section 49 these patients can be made subject to restrictions, which have the effect of requiring the Secretary of State's consent on all matters relating to leave of absence, transfer or discharge. Section 41 contains similar provisions for those with hospital orders;
- vii. the transfer to hospital, by order of the Secretary of State, of an unsentenced or untried defendant in criminal proceedings who is held in a Prison Service establishment (section 48). In this case restrictions are mandatory. Civil

prisoners and persons detained under the Immigration Act 1971 may also be admitted under this section, but restrictions are not mandatory.

- viii. the transfer of patients from one part of the United Kingdom, Channel Islands or the Isle of Man to another. Those transferred to England and Wales are treated as if they had been admitted to hospital under the Act, so that some of them will, in effect, be subject to restricted hospital orders (part VI).

8 Section 2 of the Trial of Lunatics Act 1883 enables juries to return a verdict of acquittal on grounds of insanity, and Section 4 of the Criminal Procedure (Insanity) Act 1964, as substituted by Section 2 of the Criminal Procedure (Insanity and Unfitness to Plead) Act 1991 enables them to find a defendant unfit to plead. The 1991 Act also gives courts a range of disposal options ranging from an admission order with restrictions to an absolute discharge.

9 In relation to disposals and discharges the Mental Health Act 1983 provides for:-

- i. the removal of a restriction order by the Secretary of State either conditionally or absolutely so that the hospital order continues unrestricted (section 42(1));
- ii. the discharge of a patient with a restriction order, either conditionally or absolutely, by the Secretary of State, and the termination of the restriction order where discharge is absolute (section 42(2));
- iii. the return to Prison Service establishments of sentenced prisoners (section 50(1)a);
- iv. the release of sentenced prisoners on licence (section 50(1)b);
- v. the release of sentenced prisoners on completion of sentence (sections 50(2) & 50(4));
- vi. the return of unsentenced prisoners to a Prison Service establishment to await court action where the Secretary of State or the court is satisfied that they no longer require treatment or no effective treatment is available (sections 51(3) & (4) respectively);
- vii. the transfer direction ceases to have effect in respect of untried prisoners at the end of their remand period, unless they are subject to further remand or committal for trial (section 52(2));
- viii. the direction or recommendation by a Mental Health Review Tribunal, of the discharge of a patient either conditionally or absolutely (sections 72-74).

Sources of Information

10 The information from 1993 onwards in this bulletin comes mainly from the Home Office computer system for managing its casework on mentally disordered offenders. This system was introduced during 1993 and, because of difficulties with the conversion of past records and incompleteness of 1993 data, a considerable amount of validation of the information was undertaken. For details concerning the changes made to the 1992 data as a result, and the subsequent revision of 1994 information, see bulletin 20/96. A further revision in 1996 of the data processing system (explained in bulletin 20/96) means that figures for 1995 onwards may not be entirely comparable with those for 1993 and 1994. Figures for 1998 have also been revised from those published in bulletin 07/00 to account for the late notification of certain patient movements. As a result, disposals have been increased by 7, admissions by 29 and the number detained in hospital has been reduced by 27. Information for 1998 and 1999 is based on a statistical extract taken from the casework system on 2 October 2000. The information on unrestricted patients in Table 18 is from the Home Office database on criminal statistics.

11 The data from the casework system is supplemented by, and cross-checked against, information from copies of court orders provided by hospitals and from admission, discharge and transfer warrants, and transfer letters, held in the Home Office. Checks are also made against half-yearly returns from hospitals of admissions, transfers and discharges. Since 1993 a count of the population of restricted patients in hospitals on 31 December has also been carried out, using yearly returns from hospitals.

12 The casework management system contains a wider range of information on the reason for discharge (Table 16) than was previously available and minor differences have arisen in the classification of type of offence.

Definition of an admission

13 Patients transferred from or to a hospital outside England and Wales are counted as admissions or discharges respectively in this bulletin; this does not apply to those transferred between hospitals in England and Wales. Patients can be admitted to, or discharged from, hospital more than once during a year, reflecting a change of legal category for example; each event has been included in the relevant tables. In particular, patients transferred from prison to hospital while unsentenced or untried can re-appear in the figures as admitted under restricted hospital orders. In all there were 80 patients who were admitted more than once in 1998; of these 51 were section 48 transfers followed by hospital order admissions. In the population tables, however, such patients are counted only once. A few patients are held under more than one order or warrant; they are counted once only in the population tables. Similarly, patients in prison subject to a current order for detention in hospital do not appear in the population tables.

Definition of time spent in hospital

14 The time spent in hospital for the *other legal categories* (see Tables 14 and 15) does not represent a continuous period, but a cumulative total of all the periods patients have spent in hospital throughout their lives. It does not include any time spent in the community or elsewhere when patients were not detained subject to restrictions within hospital.

Reconviction rates

15 The reconviction information in this bulletin is derived from the Offenders Index, a database which contains the criminal histories of all those convicted of a 'standard list' offence, in England and Wales, from 1963. The standard list of offences covers all indictable offences (including triable either way offences) and certain summary offences. The current coverage of standard list offences is given in appendices 4 and 5 of Criminal Statistics, England and Wales 1998 (Cm 4649). Grave offences are a subset of standard list offences defined as all indictable only offences for which the maximum sentence is life imprisonment plus arson not endangering life (which is triable either way). Grave offences are mainly offences of homicide, serious wounding, rape, buggery, robbery, aggravated burglary and arson.

Rounding and accuracy

16 Although care has been taken in compiling the figures in this bulletin a degree of inaccuracy is inherent in all statistical recording systems. Figures are generally shown to the last digit to provide a comprehensive record of the information collected but are not necessarily accurate to the last digit shown. Where percentages are given, they may not add exactly to 100 because of independent rounding.

Symbols used

17 The following symbols have been used in this bulletin:-

i. .. not available

ii. - nil

Other Sources of Statistics

18 Statistics of mentally disordered offenders within the criminal justice system and of other mentally ill patients in hospitals are available from other sources. Statistics on all patients formally admitted or detained for psychiatric care under the 1983 Mental Health Act in England are available from the Department of Health, including information on:

- i. offenders admitted following remand to hospital for reports (section 35) or treatment (section 36);
- ii. non-offenders admitted following authorisation by a court to search for and remove a patient to a place of safety (section 135);
- iii. patients admitted following removal from a public place to a place of safety by the police (section 136).

Contact Paul Thatti, Statistics Division 2C, Room 430B, Department of Health, Skipton House, 80 London Road, London, SE1 6LH.

19 In addition to the data in this bulletin and Department of Health publications on hospital admissions, information is available on court disposals as follows:-

- i. Home Office figures on probation orders with a condition of psychiatric treatment (residential or non-residential) made under section 3 of the Powers of Criminal Courts Act 1973 are published annually in Probation Statistics, England and Wales (for availability see Note 20);
- ii. details of court disposals are published by the Home Office in the supplementary volumes of Criminal Statistics, England and Wales (a Stationery Office publication).

Further Information

20 This bulletin has been prepared by the Offenders and Corrections Unit of the Research Development and Statistics Directorate of the Home Office. If you have any enquiries about figures used in the bulletin please contact Ricky Taylor at this address:-

Offenders and Corrections Unit
Home Office Research Development and Statistics Directorate
50 Queen Anne's Gate
London
SW1H 9AT (Telephone 020 7273 3452)
Email: ricky.taylor@homeoffice.gsi.gov.uk

Further copies of this and other Home Office statistical publications are available from:-

Home Office Research Development and Statistics Directorate
Information and Publications Group
Room 201
50 Queen Anne's Gate
London
SW1H 9AT (Telephone 020 7273 2084)

or by internet e-mail to: rds.ho@gtnet.gov.uk

Many publications are also downloadable from the RDS website at:

<http://www.homeoffice.gov.uk./rds/publf.htm>

Press enquiries should be made to:-

Home Office
Press and Publicity Section
50 Queen Anne's Gate
London
SW1H 9AT (Telephone 020 7273 4600)

RESEARCH DEVELOPMENT AND STATISTICS DIRECTORATE MISSION STATEMENT

RDS is part of the Home Office. The Home Office's purpose is to build a safe, just and tolerant society in which rights and responsibilities of individuals, families and communities are properly balanced and the protection and security of the public are maintained.

RDS is also part of the Government Statistical Service (GSS). One of the GSS aims is to inform Parliament and the citizen about the state of the nation and provide a window on the work and performance of government, allowing the impact of government policies and actions to be assessed.

Therefore -

Research Development and Statistics Directorate exists to improve policy making, decision taking and practice in support of the Home Office purpose and aims, to provide the public and Parliament with information necessary for informed debate and to publish information for future use.