

Criminal careers of those born between 1953 and 1978

4/01

England and Wales

12 March 2001

Julian Prime, Steve White, Sarah Liriano and Kinnari Patel

This statistical bulletin examines the criminal convictions of people born in 1953, 1958, 1963, 1968, 1973, and 1978.

MAIN POINTS

- The earlier a male offender has his first conviction the more likely he is to be convicted again; the relationship with age is not so strong for female offenders. (*paras 3.10, 3.12*)
- 33 per cent of males and 9 per cent of females born in 1953 had been convicted of at least one 'standard list' offence before the age of forty-six. (*paras 2.1, 2.6*)
- Two-thirds of all court appearances where a conviction occurred before the age of forty-six for males born in 1953 were attributable to about one-quarter of offenders, or 8 per cent of the male population. (*para 3.6*)
- The majority of offenders had been convicted on only one occasion: half of male offenders and three-quarters of female offenders born in 1953 had only been convicted once. (*paras 3.4, 3.7*)
- 22 per cent of males currently aged 10 to 45 are estimated to have a conviction for at least one standard list offence. (*para 2.8*)
- 55 per cent of male offenders and eighty per cent of female offenders had a criminal career of less than a year in length. (*paras 3.18, 3.19*)
- Nearly half of male offenders and two-thirds of female offenders born in 1953 were first convicted of theft or handing of stolen goods. (*paras 2.17, 2.18*)
- The peak age of known criminal activity for males was nineteen, at which age 11 per cent of those born in 1953 were known to be criminally active. Over 10 per cent of males born in 1953 were criminally active between the ages of 17 and 25. (*para 2.14*)
- 7_ per cent of males and half of one per cent of females born in 1953 had received a custodial conviction before the age of forty-six. (*paras 2.22, 2.23*)
- For males and females born in more recent cohort years the proportion with at least one conviction was lower than those born in earlier cohort years. This reflects the increased use of cautioning of young offenders. (*paras 2.3, 2.5*)

1. INTRODUCTION

1.1 This statistical bulletin updates the analysis of the criminal histories of offenders born in selected weeks in 1953, 1958, 1963, 1968, 1973 and 1978. The commentary is in two parts:

- participation of the general population in offending;
- frequency of offending by known offenders.

Some of the analyses concentrate on results for the 1953 cohort only.

1.2 The estimates in this bulletin are based on data from the Offenders Index, a database which contains the criminal histories of those convicted of a 'standard list' offence, in England and Wales, between 1963 and 1999. This has been built up from reports of court appearances submitted by the police and courts to the Home Office. 'Standard list' offences include all indictable and certain of the more serious summary offences. Several offences (including all categories of common assault, driving whilst disqualified, driving with excess alcohol, and dangerous driving) were added to the standard list in 1995 and 1996, increasing the annual number of convictions added to the Index by close to 100,000 offences out of a total of 450,000. No information on cautions, reprimands, final warnings, or informal methods of dealing with offenders is held on the Index. The figures have been related to the number of live births to give estimates for the general population.

1.3 Generally, the analysis presented in this bulletin is based on the number of court appearances where an offender was convicted of one or more offences rather than on numbers of convictions. Individual convictions within a court appearance have been used to determine whether someone has ever had a conviction for a particular type of offence or has been sentenced to custody. In the text, the terms 'court appearance' and 'conviction' have been used interchangeably.

1.4 In this bulletin, convictions are taken as a proxy for offending. Many offences occur which do not lead to a convictions. The 2000 British Crime Survey suggests that only 23 per cent of crimes against private individuals and their households end up in the recorded crime count. Even when the crime is recorded, the police only clear up around one quarter of these offences, and not all of these offenders will be dealt with at a court. Our estimates, therefore, relate to the subset of known offenders who have been convicted of at least one 'standard list' offence. They give only a general indication of offending patterns since we do not know how representative this subset of offenders is of all offenders. More information on self-reported offending of a sample of offenders in prison will be published by the Home Office later in 2001.

1.5 Results contained in this bulletin are not entirely consistent with those previously published, most recently in chapter 9 of Criminal statistics, England and Wales, 1998 (Cm 4649). This is due to improvements in the data used in the analysis resulting from the identification of cases where one offender was previously recorded on the database as two or more offenders. This has had the effect of slightly reducing the estimated proportion of the general population with a conviction but increasing the number of convictions for the remaining offenders.

1.6 Detailed definitions and descriptions of methodology used are given in the notes at the back of the bulletin.

2. PARTICIPATION

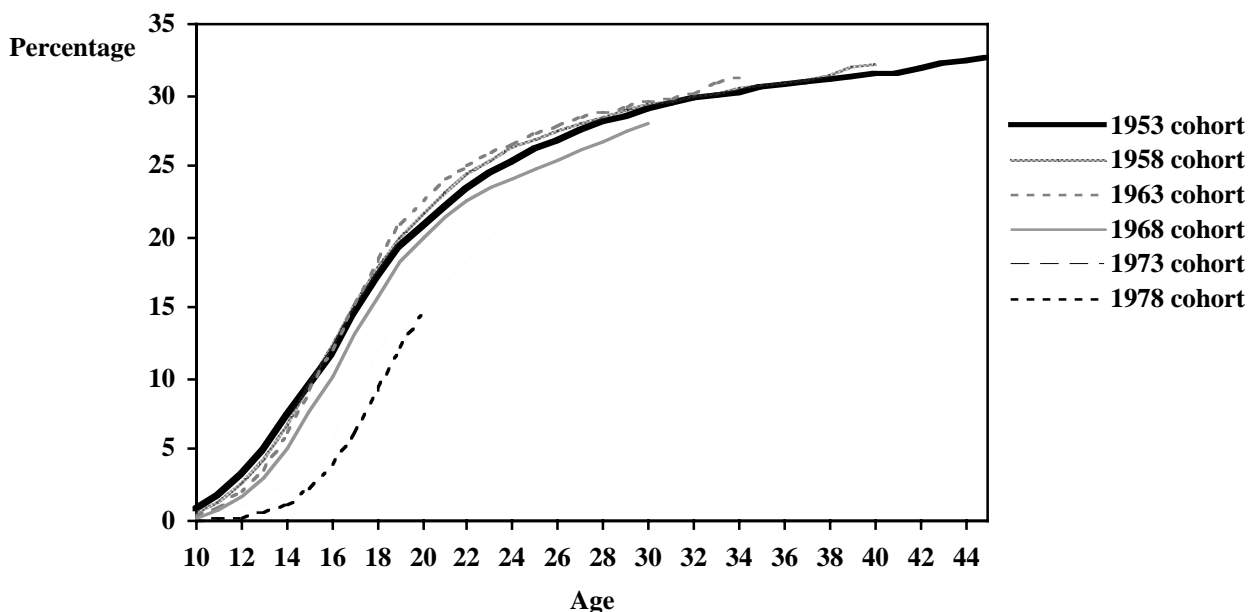
Population with a conviction (Table 1 and Figures 1-4)

Males

2.1 Thirty three per cent of men born in 1953 had at least one conviction for a 'standard list' offence before the age of forty-six. The percentage of the population with at least one conviction increases with age, rising from 7 per cent before the age of fifteen, to 19 per cent before the age twenty, 28 per cent before the age of thirty, and 31 per cent before the age of 40. Most offenders are first convicted of an offence between the ages of about thirteen and twenty. The number of new offenders tails off with increasing age and only 2 per cent of the population are first convicted of an offence in their late thirties to mid forties.

2.2 There are differences between the six birth cohorts in the percentage of the population with a conviction. Before the age of fifteen, males born in the later cohort years are less likely to have been convicted of an offence than males born in 1953. The difference is slight for males born in 1958 (when 6.8 per cent had a conviction before the age of fifteen compared to 7.4 per cent of males born in 1953), and also for males born in 1963; however the difference increases steadily through the remaining cohorts (only 1 per cent of males born in 1978 had a conviction before the age of fifteen). After the age of fifteen, males born in 1958 and 1963 are more likely to have been convicted of an offence, with 20 and 21 per cent respectively convicted of an offence before the age of twenty compared to 19 per cent of the population born in 1953. After the age of sixteen the 1968 cohort shows a similar trend to that of the 1953 cohort and by the age of nineteen, 18 per cent had been convicted. Males born in 1973 and 1978 are much less likely than males in the earlier cohorts to have been convicted; only 14 per cent of those born in 1973 and 12 per cent of those born in 1978 had been convicted of a 'standard list' offence before the age of twenty.

Figure 1 Cumulative percentage of the male population with a conviction

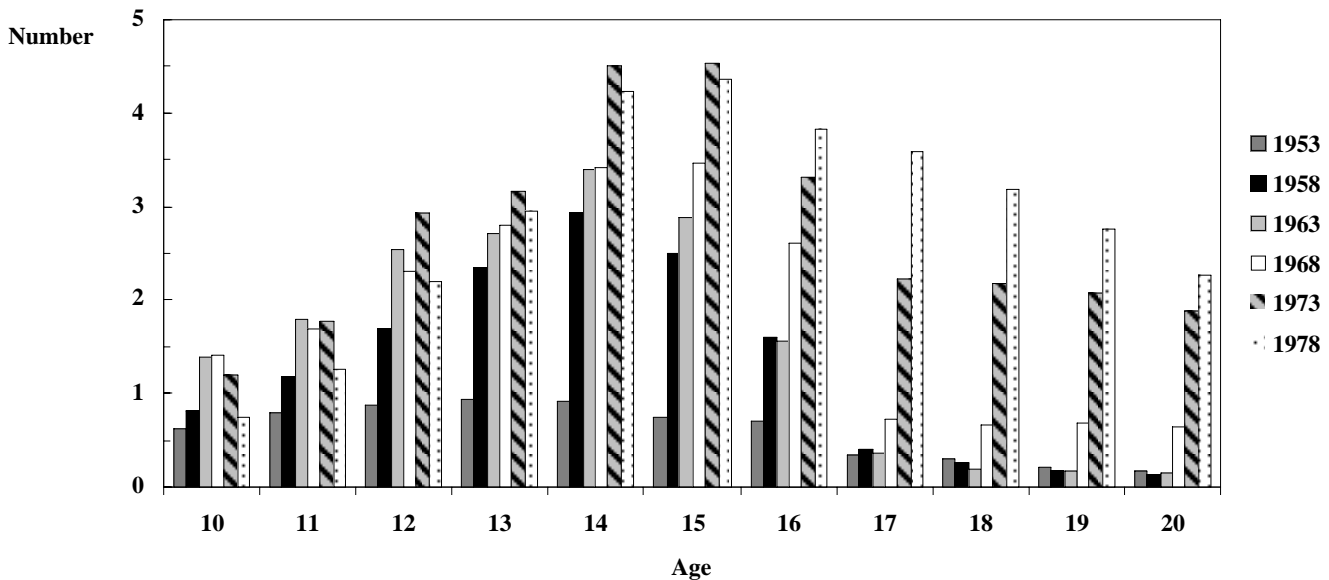


2.3 The lower proportion of males born in 1973 and 1978 convicted of an offence is probably due to changes in the way offenders are dealt with by the police rather than any change in behaviour. From the late 1960s to the early 1970s and again throughout the 1980s and early 1990s the use of the caution as a means of dealing with an offender, particularly a young offender, increased. In the 1960s only about 10 per cent of offenders were dealt with by means of a caution whereas by the 1980s that proportion had increased to 20 per cent, and increased further still during the 1990s to over one third of all offenders. This has had the effect of reducing the proportion with a conviction for the population born in the later cohort years, since those offenders are likely to have been given a caution rather than to have been sent to court.

2.4 A survey in 16 police forces of persons arrested in late 1995, published in Home Office Statistical Findings Issue 2/96, "Police disposals of notifiable offences cleared up following arrest or report" reveals evidence to suggest that there may also have been an increase in the police use of informal cautions for young offenders. The increased use of informal methods helps to explain the substantial fall in the number of juvenile males (particularly males aged 10-14) found guilty or cautioned since the mid 1980s.

2.5 Figure 2 shows the number of cautions given to males aged between 10 and 20, as a percentage of the population. The rate for each of the cohort years is shown and illustrates the increasing use of cautioning. Males born in 1953 had a cautioning rate of 0.7 per cent at the age of 15 whereas males born in 1978 had a much higher rate of 4.3 per cent. This change has contributed to the reduction in the proportion of the population with a conviction in the more recent cohorts.

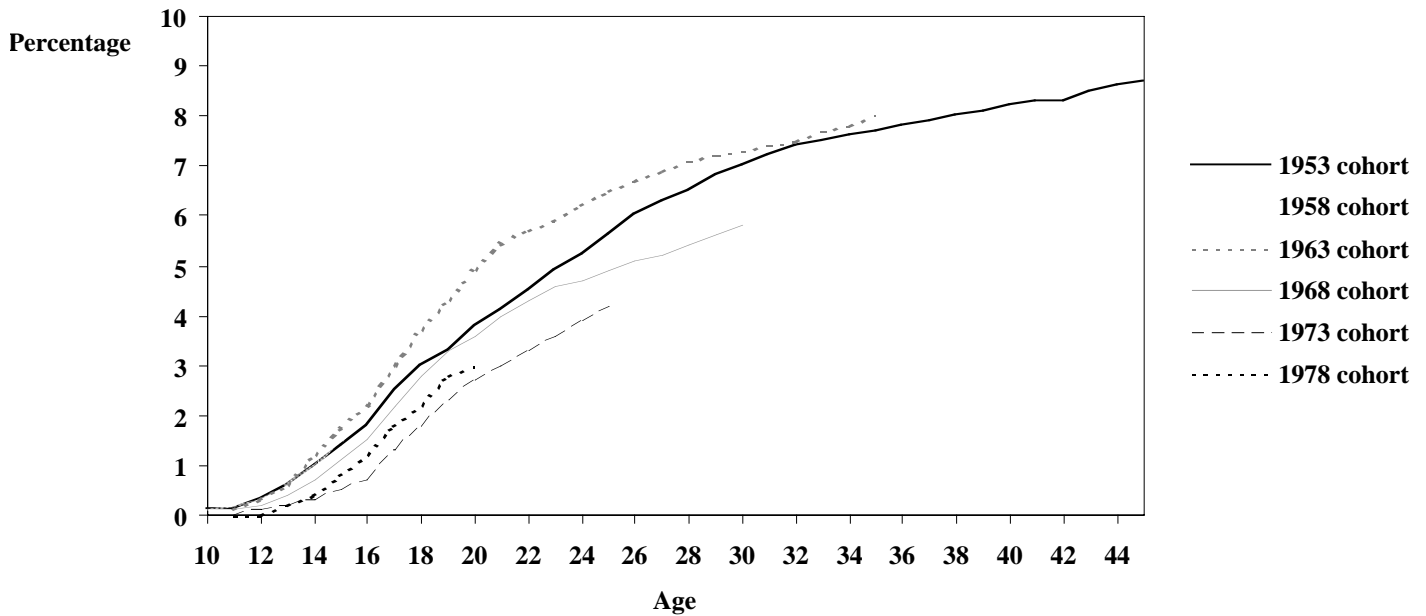
Figure 2 Number of males cautioned per 100 population



Females

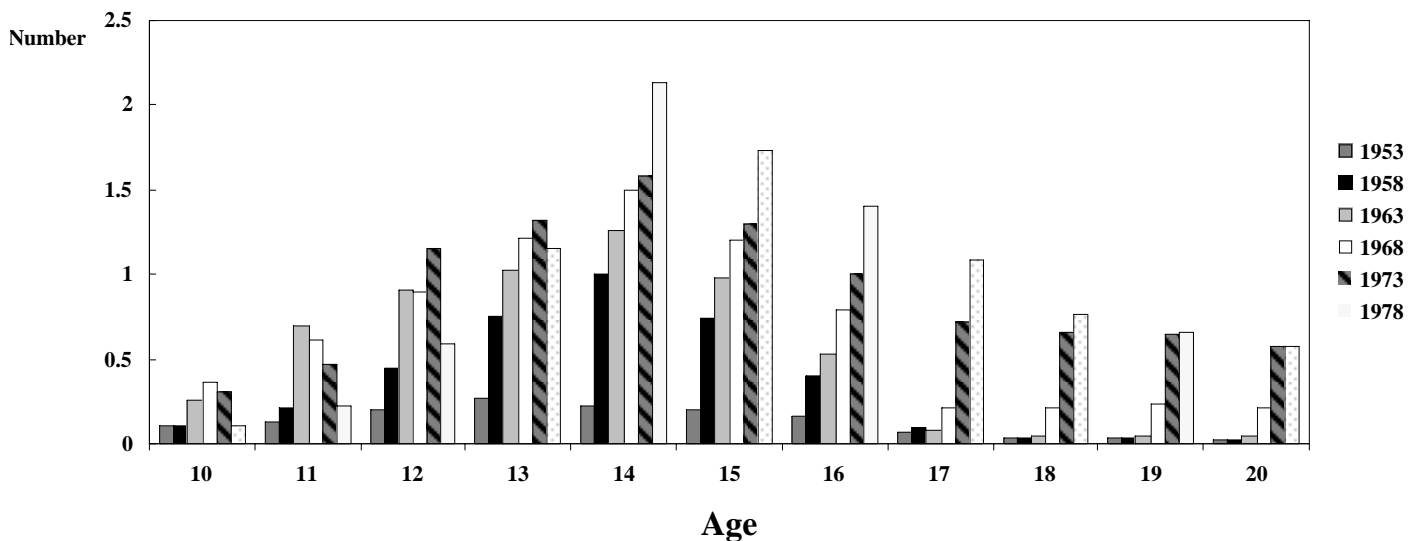
2.6 Nine per cent of women born in 1953 had been convicted of a 'standard list' offence before the age of forty-six. At the younger ages the percentage of the female population with a conviction is only between a eighth and a twentieth of the percentage of the male population with a conviction, but by the time the population was in their late thirties and early forties the percentage of women convicted is about a quarter of the percentage of men convicted. The differences between the six birth cohorts, shown in Figure 3, are very similar to those observed for males in Figure 1.

Figure 3 Cumulative percentage of the female population with a conviction



2.7 Figure 4 shows that as for the male population, cautioning rates for young female offenders are much higher for the later cohorts.

Figure 4 Number of females cautioned per 100 population



Estimates for all persons aged under forty-six (Table A)

2.8 Whilst this bulletin analyses the criminal behaviour of persons born in six particular years, it is possible to estimate from the cohort files the proportion of the general population currently aged under 46 who have a criminal conviction. By comparing the cohort proportions with the current estimated population in England and Wales, the figures reveal that 27 per cent of males and 6_ per cent of females currently aged 18 to 45 have a criminal conviction. The following table shows similar estimates for other age breakdowns.

Table A Proportion of persons estimated to have a criminal conviction, 1999.

Age band	Males	Females
10-17	2%	_%
18-20	12%	2_%
21-45	28%	6_%
10-45	22%	5_%
18-45	27%	6_%

Offenders desisting (Table 2 and Figure 5)

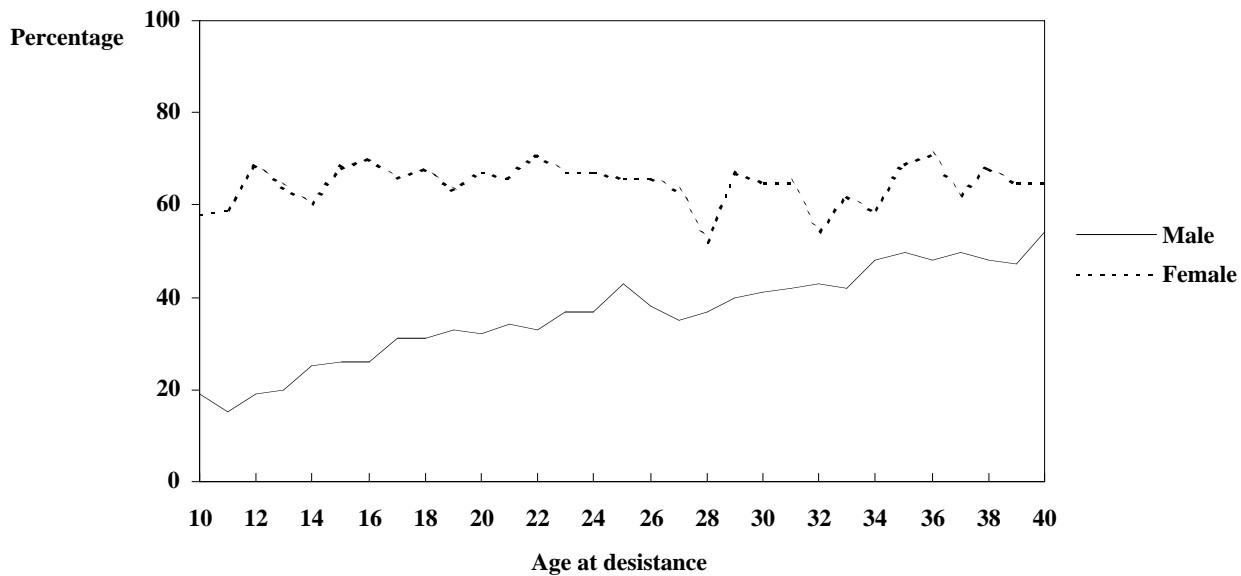
2.9 In this bulletin an offender is defined as a 'desister' if he or she has had a conviction, but was not convicted of a subsequent crime for at least five years. This is a measure of the proportion who have not been reconvicted rather than a measure of those who have not reoffended, which we cannot estimate directly. Table 2 shows the number and proportion of offenders born in 1953 who subsequently desisted, by the age at which they desisted.

Males

2.10 The likelihood of someone desisting increases as the age of the offender increases, as illustrated in Figure 5. The proportion of males convicted at the age of ten who were not convicted of a further offence was only 19 per cent. This figure is an overestimate of the proportion who have desisted from committing a crime since not all offenders will have been caught by the police and some who have been caught will have been dealt with by a caution rather than by sentence at court. The desistence rate increases steadily with age, reaching one third by the age of nineteen, 43 per cent by the age of twenty five and around one in two between the ages of thirty four and forty. This is not necessarily an indication that offenders are less likely to commit crimes as they get older: it could be that they become better at avoiding detection as they get older, or that they switch to crimes with lower detection rates, or that because they are more likely to contest cases at court they are more likely to be found not guilty. This conclusion was also drawn by Graham and Bowling in Home Office Research Study 145, "Young People and Crime".

2.11 The desistence rates for the other five birth cohorts, not shown here, show a similar pattern to that of the 1953 cohort.

Figure 5 Percentage of offenders born in 1953 who desisted



Females

2.12 The desistance rates of female offenders born in 1953 show a very different pattern to those of male offenders, as is shown in Figure 5. The proportion of offenders desisting is much higher than for males, and the rate hardly changes with age. The average desistance rate for all ages is 65 per cent, ranging from 52 per cent to 71 per cent.

Criminal activity (Table 2 and Figure 6)

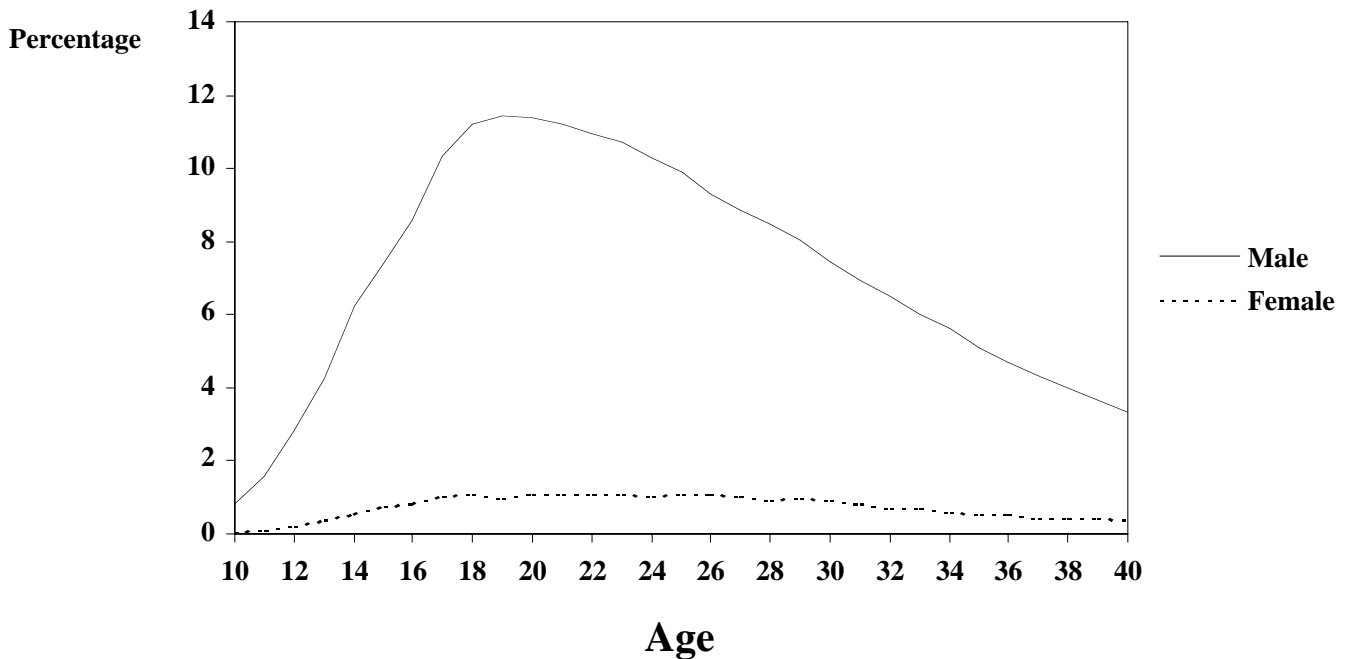
2.13 A person is defined here as being 'criminally active' at age X if:

- they are convicted at age X, or
- they have two or more convictions and age X is between their first and last recorded conviction.

Males

2.14 The proportion of the male population born in 1953 known to be 'criminally active' increases rapidly with age to a peak of 11 per cent at age nineteen. The known 'criminally active' proportion of the population tails off gradually after that age to reach 3 per cent at age forty. The pattern is similar for the later cohorts (not shown here), with the highest proportion of the population known to be involved in criminal activity at the ages of eighteen and nineteen. The level of known criminal activity of the 1973 and 1978 birth cohort appears to be lower than that of the earlier cohorts, partly because these offenders have not been followed up for so long but mainly because offenders born in the 1970s are more likely to have been cautioned than offenders in earlier years.

Figure 6 Percentage of the population known to be criminally active, 1953 cohort
cohort



Females

2.15 The proportion of the female population known to be 'criminally active' is much lower than for males, with the proportion peaking at 1.1 per cent between the ages of 20 and 26, with small variations between the six cohort years.

Type of offence at first court appearance (Table B)

2.16 Table B shows the distribution of the type of offence at each offender's first court appearance resulting in a conviction, for offenders born in 1953. In cases where there was more than one conviction at this court appearance, the offence attracting the most severe sentence has been counted.

Males

2.17 Nearly half of male offenders born in 1953 received their first conviction for theft and handling stolen goods. Violence against the person, burglary and criminal damage were also relatively common offences at first conviction, with between 10 and 13 per cent of offenders being first convicted of each of these offences.

Females

2.18 Two thirds of female offenders born in 1953 were first convicted of theft and handling stolen goods. Fraud and forgery was also relatively common at 9 per cent, followed by violence against the person at 7 per cent.

Table B Percentage with principal offence¹ at first conviction in each offence group², 1953 cohort

Offence group	Males	Females
Violence against the person	9.6	7.3
Sexual offences	2.7	0.1
Burglary	12.9	3.2
Robbery	0.5	0.1
Theft and handling stolen goods	48.6	67.7
<i>Theft of a vehicle</i>	9.0	1.5
<i>Theft from a vehicle</i>	3.1	0.3
<i>Theft from shops</i>	8.2	38.7
<i>Other theft and handling</i>	28.3	27.2
Fraud and forgery	4.2	8.9
Criminal damage	10.1	3.6
Drug offences	3.4	3.2
Other indictable	2.0	1.8
Other summary	3.3	1.9
Motoring	1.9	2.2

¹ The offence for which the most severe sentence was given

² See note 12 regarding offence groupings, since they differ slightly from the offence groupings used in Criminal Statistics.

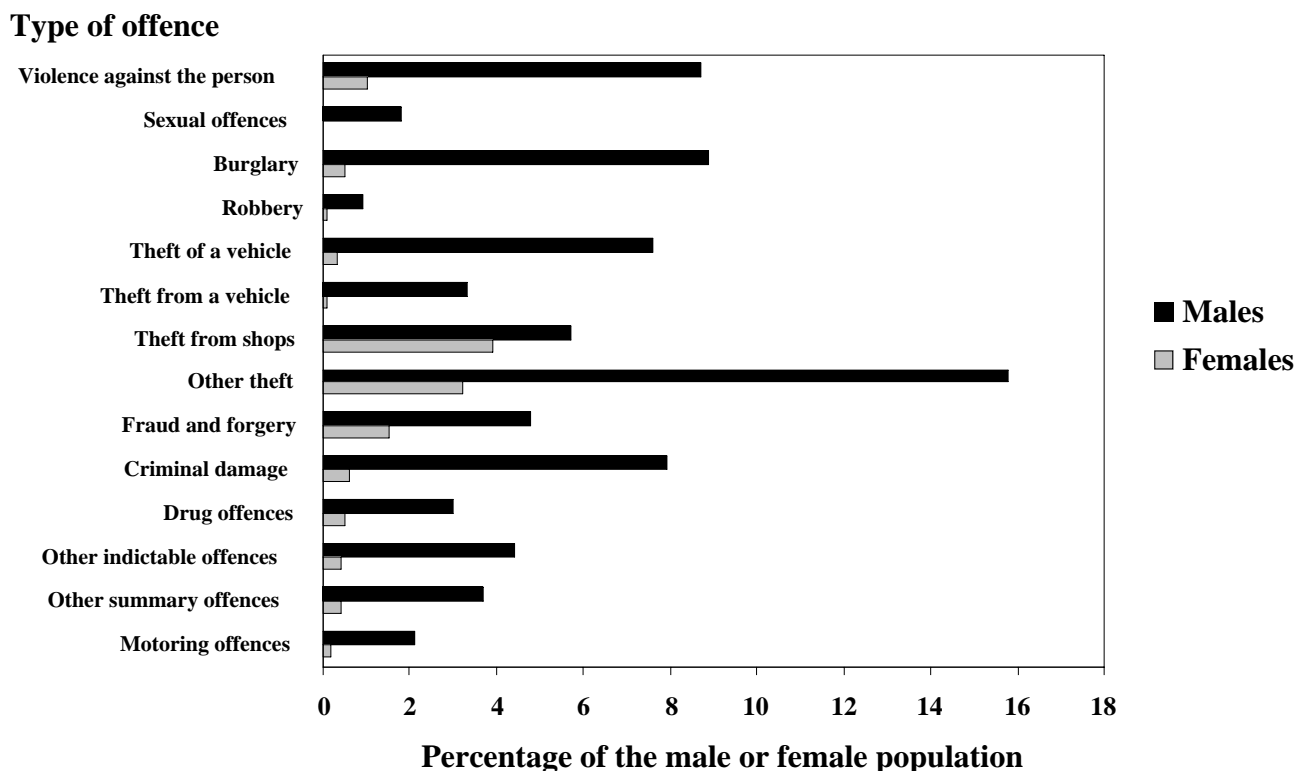
Population convicted by type of offence (Tables 3a and 3b and Figure 7)

2.19 Tables 3a and 3b show the percentage of the population that has had at least one conviction for any of fourteen categories of offence.

Males

2.20 The most common offence category is that of 'other theft', for which 16 per cent of males had been convicted at least once before the age of forty-six. Within this category the predominant offences are 'other theft or unauthorised taking' and 'handling stolen goods'. Other property offences that are common are burglary (9 per cent), criminal damage (8 per cent) and theft of a vehicle (8 per cent). Looking at the violent offences, 9 per cent of males born in 1953 have at least one conviction for an offence of violence against the person before the age of forty-six, 2 per cent for a sexual offence and 1 per cent for robbery. The proportion of males with a property offence conviction was high even before the age of twenty one; 10 per cent had at least one conviction for 'other theft', 7 per cent for burglary and 6 per cent for theft of a vehicle.

Figure 7 Percentage of the population born in 1953 with a conviction before the age of forty-six, by type of offence



Females

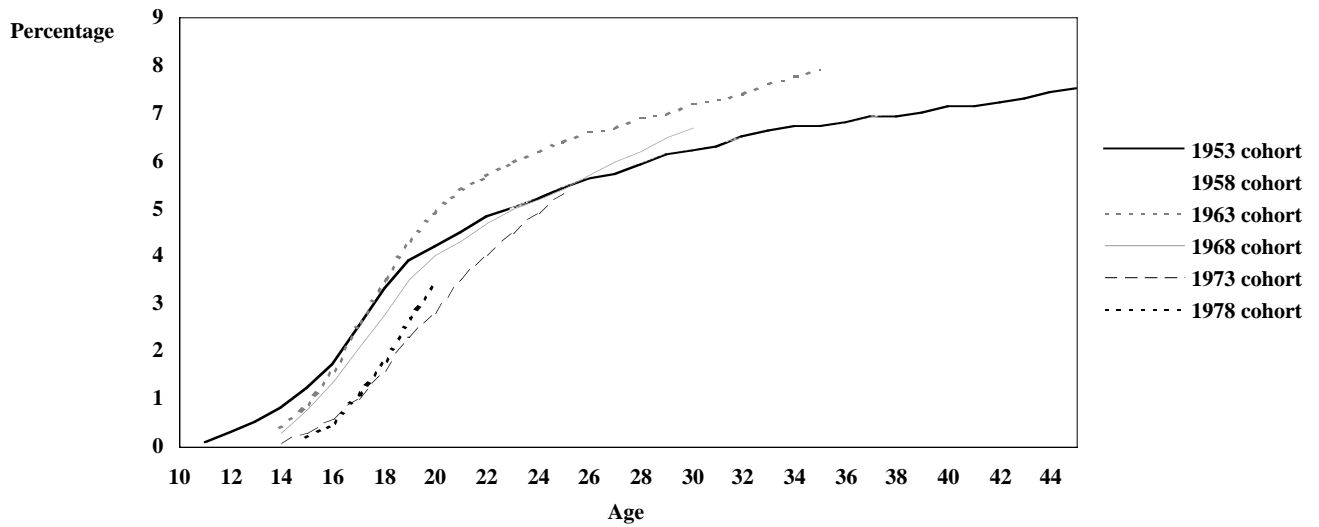
2.21 The most common offence for females to be convicted of is theft from shops, of which 4 per cent of females had been convicted at least once before the age of forty-six. 'Other theft' is also relatively common (3 per cent). For all the other offence categories the percentage of females with a conviction is one per cent or less.

Custodial sentences (Table 4 and Figure 8)

Males

2.22 7.5 per cent of the male population born in 1953 had been given at least one custodial sentence before the age of forty-six. The percentage of the population with a custodial sentence increases most rapidly between the ages of fifteen and twenty, from 1 to 4 per cent. The percentage increases by a further 2 per cent between the ages of twenty and thirty and by only 1 per cent from the age of thirty onwards. The 1958 and 1968 cohorts show a very similar pattern to that of the 1953 cohort, but males in the 1963 cohort are more likely to have received a custodial sentence (6 per cent by the age of twenty-three compared to 5 per cent at the same age for the 1953, 1958 and 1968 cohorts). Males in the 1973 and 1978 cohorts are less likely to have received a custodial sentence (1 per cent by the age of seventeen compared to 2 per cent at the same age for the 1953 cohort). However it is not possible simply to imply that different cohorts are more or less seriously criminal (measured by imprisonment) since the use of custodial sentences by the courts has changed through the years.

Figure 8 Cumulative percentage of the male population given a custodial sentence



Females

2.23 Around half of one per cent of the female population born in 1953 had received a custodial sentence before the age of forty-six. The figures for the six cohorts are broadly similar.

3. FREQUENCY OF OFFENDING

Distribution of court appearances (Tables 5a and 5b and Figure 9)

3.1 Most offenders have only one court appearance resulting in a conviction before the age of forty-six, whereas a few have twenty-one or more. Offenders who have been convicted a number of times account for a high proportion of the total number of court appearances.

3.2 Table 5 shows the percentage of the population with 1, 2, 3 etc. court appearances by the age specified and also the percentage of the convicted population with 1, 2, 3 etc. court appearances. The third section of the table shows the proportion of all court appearances accounted for by each type of offender.

Males

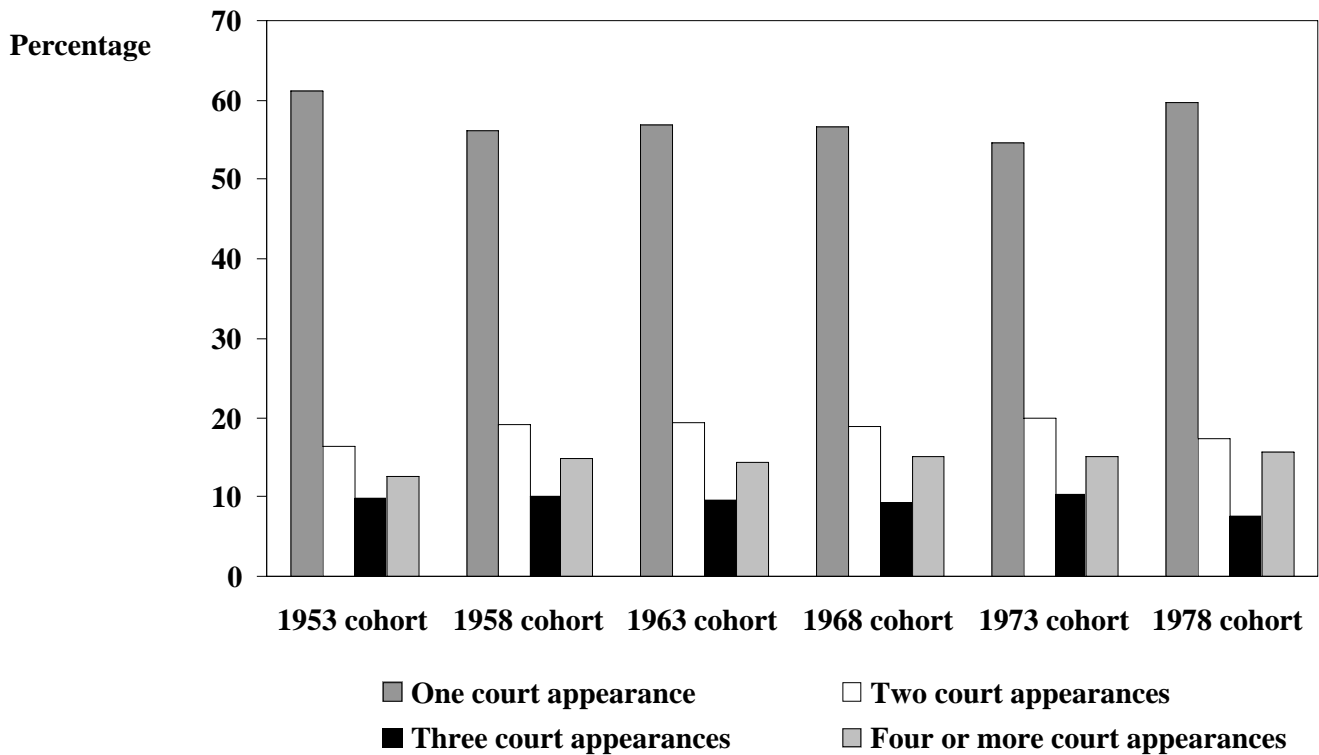
3.3 As mentioned in the participation section of this bulletin, thirty three per cent of the male population born in 1953 had been convicted in court at least once before they reached the age of forty-six. This can be split further: sixteen per cent of the population had been convicted on only one occasion, 5 per cent had been convicted on two occasions, 3 per cent had been convicted on three occasions, and 8 per cent had been convicted on four or more occasions. The percentage of the population under seventeen convicted of a standard list offence has fallen from 12 per cent in 1953 to 4 per cent in 1978 and the percentage with only one court appearance has fallen from 7 per cent to 2 per cent. This reflects the increased use of cautioning for young offenders.

3.4 Taking the population of male offenders born in 1953, half had appeared in court only once before the age of forty-six, 17 per cent had two court appearances, 8 per cent had three court appearances and the remaining 25 per cent had four or more court appearances.

3.5 The proportion of offenders with four or more court appearances before the age of seventeen has increased slightly from 13 per cent of those born in 1953 to 16 per cent of those born in 1978.

3.6 Offenders with more than one court appearance account for a high proportion of all court appearances. Two thirds of all the court appearances amassed by males born in 1953 can be attributed to the one-quarter of all offenders who had four or more court appearances before the age of forty-six. Comparing the six birth cohorts before the age of seventeen, the percentage of court appearances attributable to offenders with six or more court appearances has increased from 19 per cent for offenders born in 1953 to nearly 28 per cent for offenders born in 1978. The increase is likely to be a result of the increased cautioning which has meant that offenders appearing in court are more likely to be repeat offenders.

Figure 9 Percentage of male offenders, aged under seventeen



Females

3.7 The proportion of the population with a court appearance leading to a conviction for a 'standard list' offence is much lower for females than for males, and the proportion of female offenders with only one court appearance is higher for females than for males. Six per cent of the female population born in 1953 had one court appearance before the age of forty-six, 1 per cent had two court appearances and a further 1 per cent had three or more court appearances. Looking at the offending population, 74 per cent had only one court appearance, 14 per cent had two court appearances, 4 per cent had three court appearances and 8 per cent had four or more court appearances.

3.8 As with male offenders, the distribution of court appearances amongst offenders has changed over the six cohort years. The proportion of offenders with four or more court appearances before the age of seventeen has steadily increased from 3 per cent in 1953 to 8 per cent in 1973 with a sharp increase to 16 per cent for the 1978 cohort.

3.9 The 8 per cent of female offenders who had four or more court appearances account for one third of all court appearances before the age of forty-six.

Subsequent court appearances by age at first court appearance

(Table 6 and Figure 10)

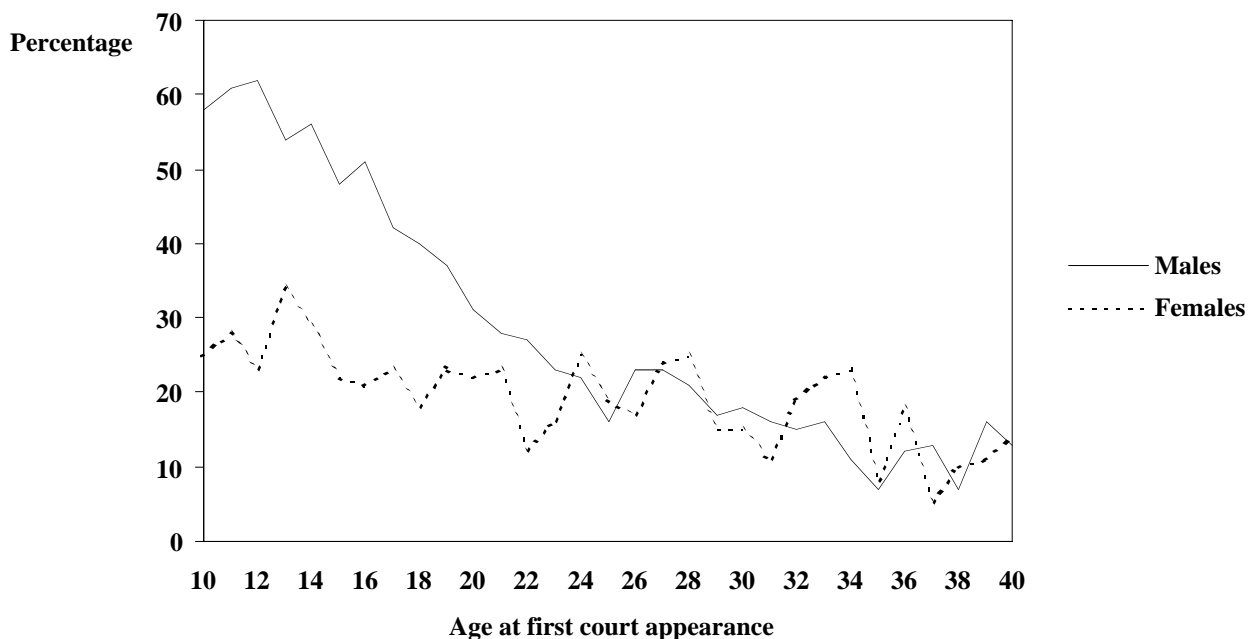
Males

3.10 Table 6 and Figure 10 show that male offenders who start their criminal career at an early age are likely to be convicted again at a later age. Almost 60 per cent of male offenders born in 1953 who were first convicted of a 'standard list' offence at the

age of ten were convicted of further offences within five years. This rate of reconviction decreases steadily with increasing age of first conviction, reaching 48 per cent by the age of fifteen, 31 per cent by the age of twenty, 18 per cent by the age of thirty and 13 per cent by the age of forty.

3.11 The percentage of offenders who went on to be convicted of further offences within five years of their first conviction is higher in later cohort years. For example 70 per cent of offenders born in 1978 who were first convicted at the age of fifteen went on to be convicted of further offences, compared with 69 per cent born in 1973, 64 per cent born in 1968, 62 per cent born in 1963, 59 per cent born in 1958 and 48 per cent born in 1953. The differences between the cohorts diminish with increasing age.

Figure 10 Percentage of offenders with subsequent court appearances within five years



Females

3.12 The proportion of female offenders born in 1953 who were convicted of a further offence within five years ranges from 5 to 34 per cent and is less dependent on age of first conviction than for the males. The proportions are higher in later cohort years.

Probability of further court appearances (Table 7 and Figure 11)

3.13 Table 7 and Figure 11 show that the probability of an offender appearing again at court increases as the number of his or her previous court appearances increases.

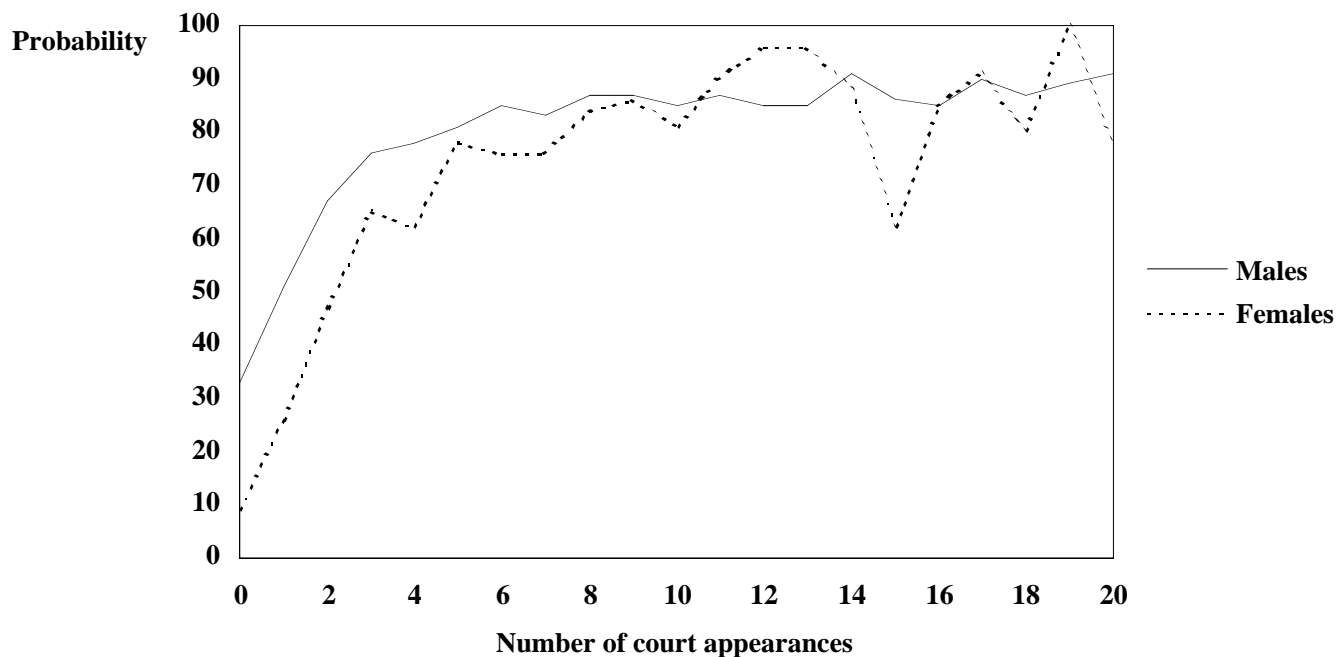
Males

3.14 For the 1953 cohort the probability of a convicted offender with one previous court appearance going on to receive conviction(s) at a further court appearance is 51 per cent; with two to five previous court appearances it is around 75 per cent. The

probability of further court appearances reaches about 85 per cent once an offender has six or more previous court appearances and does not increase much as the number of previous court appearances increases.

3.15 The pattern for the other cohorts is very similar, apart from the 1978 cohort which shows slightly lower probabilities of further court appearances for offenders with more than three previous court appearances; this is because those born in 1978 have not had so much time in which to be convicted of further offences.

Figure 11 Probability of further court appearances, 1953 cohort



Females

3.16 The probability of further court appearances for offenders with 1 or 2 court appearances is lower for females than for males, at 26 per cent for females with 1 court appearance and 47 per cent for females with two court appearances. Once an offender has three or more court appearances, females are just as likely to be further convicted at court as males.

Length of criminal career (Table 8)

3.17 The length of a criminal career is measured by the number of years between an offender's first and last convictions; for persons with just one conviction, the length of their careers is defined as being 'less than one year'. The results of analysis of the 1953 cohort are shown in Table 8. The career length has been affected by the addition of offences to the standard list in 1995 and 1996. Note 10 gives details of these additional offences.

Males

3.18 The majority of male offenders have short criminal careers, almost 55 per cent having careers of less than a year in length and two thirds with a criminal career less than five years in length. Most offenders with a criminal career of less than one year have only one court appearance. Almost a quarter of offenders have a criminal career of at least ten years in length. One in ten has a criminal career of at least twenty years and 3 per cent have a criminal career of thirty or more years. The average length of career is 6.2 years if all those with just one conviction are included, or 12.4 years if 'once only' offenders are excluded. At this stage of follow-up the maximum length of career possible was 35 years and an estimated 120 offenders had a career of this length.

Females

3.19 Eighty per cent of female offenders had a criminal career of less than one year in length, of whom the majority are 'once only' offenders. The proportion of offenders with criminal careers of over ten years is low at only 7 per cent. The average length of criminal career for all offenders is 1.8 years, or 7.1 years if all 'once only' offenders are excluded. An estimated 70 females born in 1953 had a criminal career of 30 or more years.

Distribution of custodial court appearances throughout the convicted population **(Tables 9a and 9b)**

Males

3.20 Twenty-three per cent of convicted males born in 1953 received at least one custodial sentence before the age of forty-six. Most of these received their first custodial sentence by the age of twenty. The figure is slightly lower for offenders aged sixteen or under, by which age 14 per cent of offenders born in 1953 had been given at least one custodial sentence. The rates for the other cohorts are very similar to those for the 1953 cohort.

3.21 Most male offenders who had spent time in custody had been sentenced to custody only once. The percentage who were sentenced to custody on one occasion decreases as the offenders get older, as would be expected. About 71 per cent had been sentenced to custody on only one occasion before the age of seventeen compared with 54 per cent before the age of forty-five. Twenty nine per cent of offenders with custodial sentences received custodial sentences on three or more occasions before the age of forty-six. The results for the other cohorts are very similar.

Females

3.22 The proportion of the female population with at least one custodial sentence is much lower for females than for males, and the proportion of those sentenced to custody on only one occasion is higher. Only 6 per cent of convicted females had been given one or more custodial sentences before the age of forty-six and of these offenders with custodial sentences 79 per cent had been sentenced to custody on only one occasion, 10 per cent on two occasions and 11 per cent on three or more occasions.

Table 1 Cumulative percentage of the population with a conviction, by age.

England and Wales							Percentage with a conviction						
Age	Males						Females						
	Year of birth	1953	1958	1963	1968	1973	1978	Year of birth	1953	1958	1963	1968	1973
10	0.8	0.6	0.3	0.2	0.1	0.0	0.1	0.1	-	-	-	-	-
11	1.7	1.4	1.0	0.7	0.5	0.1	0.1	0.2	0.1	0.1	0.0	0.0	0.0
12	3.2	2.6	2.1	1.7	0.9	0.2	0.3	0.3	0.3	0.2	0.1	0.0	0.0
13	4.9	4.3	3.6	3.0	1.5	0.5	0.6	0.6	0.6	0.4	0.2	0.2	0.2
14	7.4	6.8	6.3	5.1	2.4	1.1	1.0	1.0	1.2	0.7	0.3	0.4	0.4
15	9.5	9.6	9.2	7.7	3.7	2.2	1.4	1.5	1.7	1.1	0.5	0.8	0.8
16	11.7	12.4	12.1	10.1	5.5	4.0	1.8	2.1	2.2	1.5	0.7	1.2	1.2
17	14.5	15.2	15.3	13.1	8.6	6.3	2.5	2.8	3.0	2.2	1.3	1.8	1.8
18	17.1	17.8	18.4	15.8	11.7	9.5	3.0	3.5	3.7	2.8	1.8	2.2	2.2
19	19.1	19.9	20.8	18.2	13.7	12.2	3.3	4.1	4.3	3.3	2.3	2.8	2.8
20	20.7	21.7	22.6	20.0	15.3	14.8	3.8	4.6	4.9	3.6	2.7	3.0	3.0
21	22.1	23.2	24.0	21.5	16.6		4.1	5.2	5.4	4.0	3.0		
22	23.3	24.4	25.1	22.6	18.1		4.5	5.6	5.7	4.3	3.3		
23	24.4	25.4	25.9	23.5	19.7		4.9	6.0	5.9	4.6	3.6		
24	25.3	26.3	26.6	24.1	21.2		5.2	6.3	6.2	4.7	3.9		
25	26.1	27.0	27.3	24.8	22.3		5.6	6.6	6.5	4.9	4.2		
26	26.8	27.5	27.8	25.4			6.0	6.9	6.7	5.1			
27	27.4	28.0	28.4	26.1			6.3	7.1	6.9	5.2			
28	28.0	28.5	28.8	26.8			6.5	7.3	7.1	5.4			
29	28.5	28.9	29.2	27.4			6.8	7.5	7.2	5.6			
30	28.9	29.3	29.5	28.0			7.0	7.7	7.3	5.8			
31	29.3	29.6	29.8				7.2	7.8	7.4				
32	29.7	30.0	30.2				7.4	7.9	7.5				
33	30.0	30.2	30.8				7.5	8.0	7.7				
34	30.2	30.4	31.2				7.6	8.1	7.8				
35	30.4	30.6					7.7	8.1	8.0				
36	30.7	30.9					7.8	8.2					
37	30.9	31.1					7.9	8.3					
38	31.1	31.5					8.0	8.5					
39	31.3	31.9					8.1	8.6					
40	31.4	32.2					8.2	8.7					
41	31.5						8.3						
42	31.8						8.3						
43	32.1						8.5						
44	32.4						8.6						
45	32.6						8.7						

Table 2 Estimates of population convicted, population desisting from crime and population criminally active, 1953 cohort.

England and Wales

Age	Males					Females				
	Number with a conviction	Number desisting	Percentage desisting	Number criminally active	Percentage criminally active	Number with a conviction	Number desisting	Percentage desisting	Number criminally active	Percentage criminally active
10	3,000	500	19	3,000	1	200	100	58	200	-
11	3,900	600	15	5,600	2	300	200	59	300	-
12	6,400	1,200	19	10,000	3	700	500	69	800	-
13	8,700	1,700	20	15,100	4	1,100	700	64	1,300	-
14	12,600	3,200	25	21,900	6	1,300	800	60	1,700	1
15	13,400	3,500	26	26,200	7	1,900	1,300	68	2,500	1
16	14,700	3,800	26	30,300	9	1,700	1,200	70	2,600	1
17	19,700	6,000	31	36,400	10	2,400	1,600	66	3,500	1
18	20,300	6,300	31	39,500	11	2,200	1,500	68	3,600	1
19	18,200	6,000	33	40,300	11	1,600	1,000	63	3,300	1
20	16,200	5,300	32	39,900	11	2,000	1,300	67	3,700	1
21	15,600	5,300	34	39,500	11	1,800	1,200	66	3,600	1
22	14,100	4,700	33	38,500	11	1,900	1,300	71	3,700	1
23	13,200	4,900	37	37,600	11	1,900	1,200	67	3,600	1
24	11,200	4,100	37	36,100	10	1,700	1,100	67	3,500	1
25	10,800	4,600	43	34,700	10	1,900	1,300	66	3,600	1
26	9,800	3,700	38	32,700	9	1,900	1,200	66	3,600	1
27	9,200	3,200	35	31,100	9	1,600	1,000	63	3,400	1
28	9,100	3,300	37	29,800	8	1,400	700	52	3,100	1
29	8,700	3,500	40	28,200	8	1,600	1,000	67	3,300	1
30	7,600	3,100	41	26,200	7	1,500	1,000	65	3,100	1
31	7,000	3,000	42	24,400	7	1,300	800	65	2,800	1
32	6,300	2,700	43	22,800	6	1,100	600	54	2,400	1
33	5,600	2,300	42	21,200	6	1,000	600	62	2,300	1
34	5,300	2,500	48	19,800	6	900	500	59	2,000	1
35	4,300	2,100	50	18,000	5	800	500	69	1,900	1
36	4,500	2,200	48	16,600	5	700	500	71	1,700	1
37	4,000	2,000	50	15,300	4	600	400	62	1,500	-
38	3,700	1,800	48	14,000	4	700	500	68	1,500	-
39	3,400	1,600	47	12,800	4	700	500	65	1,400	-
40	3,200	1,700	54	11,800	3	600	400	65	1,200	-

Numbers have been rounded to the nearest 100

Table 3a Males born in 1953,1958,1963,1968,1973 or 1978 and convicted, by offence type.

England and Wales

Estimated number convicted before the age specified ('000's):

Offence type	Under 17						Under 21						Under 25					Under 30				Under 35			Under 40		Under 46			
	1953	1958	1963	1968	1973	1978	1953	1958	1963	1968	1973	1978	1953	1958	1963	1968	1973	1953	1958	1963	1968	1953	1958	1963	1953	1958	1963	1953	1958	1953
Males																														
Violence against the person	2.8	6.0	7.8	7.9	5.3	3.7	11.4	18.9	26.1	24.9	17.3	15.8	17.9	27.6	35.8	35.7	25.5	23.7	32.6	42.9	41.0	26.7	35.6	47.3	28.8	37.8	30.6			
Sexual offences	0.9	1.2	1.1	0.8	0.6	0.4	2.5	2.5	2.7	1.7	1.2	0.7	3.7	3.4	3.4	2.5	1.7	4.7	4.3	4.3	3.0	5.4	5.1	5.0	6.0	5.7	6.4			
Burglary	16.2	21.4	23.1	19.7	8.1	4.0	24.3	29.4	36.1	31.4	18.0	9.4	28.0	33.1	39.9	35.4	20.7	29.8	34.6	41.9	34.9	30.7	35.3	42.6	31.1	35.5	31.3			
Robbery	0.5	1.0	1.1	1.4	1.0	1.1	1.4	2.4	2.7	2.5	2.6	2.8	2.0	3.3	3.5	3.4	3.3	2.6	3.8	4.3	3.8	2.9	4.0	4.8	3.1	4.1	3.2			
Theft of a vehicle	7.9	11.1	13.5	9.7	4.3	3.3	19.9	24.2	27.7	21.6	13.1	8.5	23.9	27.8	30.9	24.5	15.0	25.5	28.9	32.1	23.9	26.3	29.4	32.6	26.5	29.5	26.7			
Theft from a vehicle	3.0	3.0	3.5	3.3	2.1	1.1	7.8	8.3	12.5	10.0	7.1	3.4	9.8	10.7	15.0	12.1	8.3	11.0	11.9	15.8	12.1	11.4	12.1	16.0	11.6	12.3	11.6			
Theft from shops	5.6	6.9	10.3	10.3	4.5	2.6	9.0	11.7	18.2	18.0	11.3	7.8	12.1	15.5	22.6	22.4	14.9	15.4	19.0	25.8	24.3	18.0	20.7	27.8	19.2	21.8	20.2			
Other theft	21.6	21.8	22.7	18.5	8.0	4.4	36.5	38.0	45.1	36.8	22.5	12.8	44.3	47.0	54.3	45.0	28.0	50.0	52.4	59.3	46.6	53.2	55.0	61.4	54.7	56.4	55.6			
Fraud and forgery	0.8	1.7	2.2	2.1	0.8	0.5	4.4	6.4	10.0	8.7	5.0	3.3	8.6	11.0	15.4	14.1	8.1	12.4	15.3	19.5	16.0	14.6	17.3	21.5	16.0	18.5	16.8			
Criminal damage	6.4	11.4	13.5	11.7	5.4	3.2	14.5	24.1	30.4	27.7	15.0	10.7	20.0	30.1	37.6	34.8	19.9	23.9	33.9	42.5	37.0	25.8	36.0	44.6	27.1	37.2	28.0			
Drug offences	-	0.1	0.2	0.4	0.4	0.8	1.0	2.6	4.9	4.5	6.3	7.7	4.4	6.5	9.1	10.4	12.9	7.1	9.1	13.2	15.2	8.7	10.9	16.0	9.7	12.2	10.4			
Other indictable offences	1.0	2.9	2.0	2.4	2.0	2.4	6.3	6.8	9.8	10.9	13.5	12.7	8.0	10.8	14.5	19.2	20.6	10.7	13.7	19.4	23.9	12.4	16.1	23.3	13.9	18.0	15.5			
Other summary offences	4.1	3.0	1.1	1.1	1.1	1.2	10.4	6.2	2.9	3.1	4.3	4.0	12.0	7.1	4.1	4.4	5.1	12.5	7.6	4.8	4.7	12.8	7.8	5.1	12.9	8.0	13.0			
Motoring offences	-	0.1	0.1	0.0	-	-	0.4	0.8	1.5	0.6	0.3	12.9	1.3	1.6	2.2	0.6	12.1	1.7	2.3	2.3	10.4	2.1	2.3	10.6	2.1	7.8	7.3			

Percentage of the population convicted before the age specified:

Violence against the person	0.8	1.6	1.8	1.9	1.5	1.2	3.2	5.0	6.0	5.9	4.9	5.2	5.1	7.2	8.2	8.5	7.3	6.7	8.5	9.8	9.8	7.6	9.4	10.8	8.2	9.9	8.7	
Sexual offences	0.3	0.3	0.3	0.2	0.2	0.1	0.7	0.7	0.6	0.4	0.4	0.2	1.0	0.9	0.8	0.6	0.5	1.3	1.1	1.0	0.7	1.5	1.4	1.1	1.7	1.5	1.8	
Burglary	4.6	5.6	5.3	4.7	2.3	1.3	6.9	7.7	8.3	7.5	5.2	3.1	7.9	8.7	9.1	8.4	5.9	8.5	9.1	9.6	8.3	8.7	9.3	9.7	8.8	9.3	8.9	
Robbery	0.1	0.3	0.2	0.3	0.3	0.4	0.4	0.6	0.6	0.6	0.8	0.9	0.6	0.9	0.8	0.8	1.0	0.7	1.0	1.0	0.9	0.8	1.1	1.1	0.9	1.1	0.9	
Theft of a vehicle	2.2	2.9	3.1	2.3	1.2	1.1	5.6	6.4	6.3	5.1	3.7	2.8	6.8	7.3	7.1	5.8	4.3	7.3	7.6	7.3	5.7	7.5	7.7	7.4	7.5	7.8	7.6	
Theft from a vehicle	0.9	0.8	0.8	0.8	0.6	0.4	2.2	2.2	2.9	2.4	2.0	1.1	2.8	2.8	3.4	2.9	2.4	3.1	3.1	3.6	2.9	3.3	3.2	3.7	3.3	3.2	3.3	
Theft from shops	1.6	1.8	2.4	2.5	1.3	0.8	2.5	3.1	4.2	4.3	3.3	2.6	3.5	4.1	5.2	5.3	4.3	4.4	5.0	5.9	5.8	5.1	5.4	6.3	5.5	5.7	5.7	
Other theft	6.1	5.7	5.2	4.4	2.3	1.4	10.4	10.0	10.3	8.7	6.5	4.2	12.6	12.3	12.4	10.7	8.0	14.2	13.8	13.5	11.1	15.1	14.4	14.0	15.5	14.8	15.8	
Fraud and forgery	0.2	0.4	0.5	0.5	0.2	0.2	1.3	1.7	2.3	2.1	1.5	1.1	2.4	2.9	3.5	3.4	2.3	3.5	4.0	4.5	3.8	4.2	4.5	4.9	4.6	4.9	4.8	
Criminal damage	1.8	3.0	3.1	2.8	1.5	1.0	4.1	6.3	6.9	6.6	4.3	3.5	5.7	7.9	8.6	8.3	5.7	6.8	8.9	9.7	8.8	7.3	9.5	10.2	7.7	9.8	7.9	
Drug offences	-	0.0	0.0	0.1	0.1	0.3	0.3	0.7	1.1	1.1	1.8	2.5	1.3	1.7	2.1	2.5	3.7	2.0	2.4	3.0	3.6	2.5	2.9	3.7	2.7	3.2	3.0	
Other indictable offences	0.3	0.8	0.5	0.6	0.6	0.8	1.8	1.8	2.2	2.6	3.9	4.1	2.3	2.8	3.3	4.6	5.9	3.0	3.6	4.4	5.7	3.5	4.2	5.3	4.0	4.7	4.4	
Other summary offences	1.2	0.8	0.3	0.3	0.3	0.4	3.0	1.6	0.7	0.7	1.2	1.3	3.4	1.9	0.9	1.1	1.5	3.6	2.0	1.1	1.1	3.6	2.1	1.2	3.7	2.1	3.7	
Motoring Offences	-	0.0	0.0	0.0	-	-	0.1	0.2	0.3	0.1	0.1	4.2	0.4	0.4	0.5	0.2	3.5	0.5	0.6	0.5	2.5	0.6	0.6	2.4	0.6	2.0	2.1	

Table 3b Females born in 1953,1958,1963,1968,1973 or 1978 and convicted, by offence type.

England and Wales

Estimated number convicted before the age specified ('000's):

Offence type	Under 17						Under 21						Under 25					Under 30				Under 35			Under 40		Under 46		
	1953	1958	1963	1968	1973	1978	1953	1958	1963	1968	1973	1978	1953	1958	1963	1968	1973	1953	1958	1963	1968	1953	1958	1963	1953	1958	1953	1958	1953
Females																													
Violence against the person	0.3	0.8	1.4	1.3	0.8	1.0	0.8	2.1	3.1	3.0	2.3	2.7	1.5	2.9	3.8	4.2	3.4	2.1	3.4	4.7	5.0	2.5	3.8	5.7	2.9	4.3	3.2		
Sexual offences	-	0.0	-	-	-	0.0	-	0.0	0.0	0.0	-	0.0	-	0.0	0.0	0.0	0.0	0.0	0.0	0.0	0.0	0.0	0.1	0.0	0.0	0.1	0.0	0.0	0.1
Burglary	0.6	0.9	1.5	0.9	0.3	0.2	1.1	1.6	2.6	1.6	0.7	0.5	1.3	1.9	2.9	1.8	0.9	1.4	0.1	3.0	1.7	1.5	2.1	3.1	1.5	2.1	1.5		
Robbery	0.1	0.1	0.1	0.1	0.1	0.1	0.1	0.1	0.2	0.2	0.2	0.2	0.1	0.2	0.2	0.3	0.3	0.1	2.0	0.3	0.3	0.1	0.2	0.0	0.2	0.2	0.2		
Theft of a vehicle	0.2	0.4	0.6	0.3	0.1	0.2	0.5	1.0	1.2	0.7	0.5	0.5	0.6	1.3	1.4	0.9	0.6	0.7	1.3	1.5	0.9	0.8	1.4	1.5	0.8	1.4	0.8		
Theft from a vehicle	0.1	0.1	0.0	0.1	0.0	0.0	0.1	0.2	0.3	0.2	0.1	0.1	0.2	0.2	0.3	0.2	0.2	0.2	0.2	0.3	0.2	0.2	0.3	0.0	0.2	0.3	0.2		
Theft from shops	2.9	3.4	4.5	3.3	1.0	0.9	5.7	7.6	10.0	6.9	3.8	2.8	8.1	10.3	12.5	8.9	4.9	10.5	12.4	14.3	9.5	12.0	13.2	15.2	12.6	13.5	13.0		
Other theft	2.6	3.0	3.4	1.9	0.7	0.5	5.4	6.4	8.0	5.2	3.1	2.3	6.9	8.7	10.5	7.1	4.5	8.9	10.5	11.9	7.9	10.0	11.2	12.5	10.5	11.7	10.7		
Fraud and forgery	0.3	0.4	0.7	0.4	0.1	0.2	1.2	2.0	3.0	2.5	1.6	1.1	2.2	3.4	4.6	4.0	2.6	3.2	4.8	6.0	4.8	4.1	5.5	6.8	4.6	6.0	4.8		
Criminal damage	0.2	0.6	0.7	0.8	0.4	0.3	0.4	1.2	1.6	1.7	1.0	0.8	0.7	1.7	2.3	2.2	1.6	1.3	1.9	2.6	2.5	1.5	2.2	3.0	1.8	2.5	1.9		
Drug offences	-	0.0	0.1	0.0	-	0.1	0.1	0.4	0.7	0.4	0.6	0.9	0.5	1.0	1.3	1.2	1.7	1.0	1.6	2.0	1.6	1.3	1.9	2.4	1.5	2.0	1.7		
Other indictable offences	0.0	0.1	0.1	0.1	0.1	0.4	0.1	0.3	1.2	0.8	1.4	1.8	0.3	0.8	1.7	1.7	2.3	0.7	1.2	2.3	2.3	0.8	1.4	2.9	1.1	1.8	1.3		
Other summary offences	0.3	0.1	0.1	-	0.0	0.0	0.9	0.2	0.1	0.0	0.1	0.2	1.1	0.3	0.2	0.0	0.2	1.2	0.4	0.3	0.2	1.2	0.4	0.0	1.2	0.4	1.3		
Motoring offences	-	-	-	-	-	-	-	-	-	-	-	0.8	0.0	0.0	-	-	0.8	0.0	0.0	0.0	0.9	0.0	0.0	0.1	0.0	0.6	0.8		

Percentage of the population convicted before the age specified:

Violence against the person	0.1	0.2	0.3	0.3	0.3	0.4	0.2	0.6	0.7	0.8	0.7	0.9	0.4	0.8	0.9	1.1	1.0	0.6	0.9	1.1	1.3	0.8	1.0	1.4	0.9	1.2	1.0		
Sexual offences	-	0.0	-	-	-	0.0	-	0.0	0.0	0.0	-	0.0	-	0.0	0.0	0.0	0.0	0.0	0.0	0.0	0.0	0.0	0.0	0.0	0.0	0.0	0.0		
Burglary	0.2	0.3	0.4	0.2	0.1	0.1	0.3	0.4	0.6	0.4	0.2	0.2	0.4	0.5	0.7	0.5	0.3	0.4	0.6	0.7	0.4	0.5	0.6	0.7	0.5	0.6	0.5		
Robbery	0.0	0.0	0.0	0.0	0.0	0.0	0.0	0.0	0.1	0.1	0.1	0.1	0.0	0.1	0.1	0.1	0.1	0.0	0.1	0.1	0.1	0.0	0.1	0.1	0.1	0.1	0.1		
Theft of a vehicle	0.2	0.1	0.2	0.1	0.0	0.1	0.2	0.3	0.3	0.2	0.2	0.2	0.2	0.4	0.3	0.2	0.2	0.2	0.4	0.4	0.2	0.2	0.4	0.4	0.2	0.4	0.3		
Theft from a vehicle	0.1	0.0	0.0	0.0	0.0	0.0	0.0	0.1	0.1	0.0	0.0	0.0	0.1	0.1	0.1	0.1	0.1	0.1	0.1	0.1	0.1	0.1	0.1	0.1	0.1	0.1	0.1		
Theft from shops	2.9	0.9	1.1	0.8	0.3	0.3	1.7	2.1	2.4	1.7	1.2	1.0	2.4	2.9	3.0	2.2	1.5	3.2	3.5	3.4	2.4	3.6	3.7	3.6	3.8	3.7	3.9		
Other theft	2.6	0.8	0.8	0.5	0.2	0.2	1.6	1.8	1.9	1.3	1.0	0.8	2.1	2.4	2.5	1.8	1.4	2.7	2.9	2.9	2.0	3.0	3.1	3.0	3.2	3.3	3.2		
Fraud and forgery	0.3	0.1	0.2	0.1	0.0	0.1	0.4	0.6	0.7	0.6	0.5	0.4	0.7	1.0	1.1	1.0	0.8	1.0	1.4	1.5	1.2	1.3	1.5	1.6	1.4	1.7	1.5		
Criminal damage	0.2	0.2	0.2	0.2	0.1	0.1	0.1	0.4	0.4	0.4	0.3	0.3	0.2	0.5	0.6	0.6	0.5	0.4	0.5	0.6	0.6	0.5	0.6	0.7	0.5	0.7	0.6		
Drug offences	-	0.0	0.0	0.0	-	0.0	0.0	0.1	0.2	0.1	0.2	0.3	0.2	0.3	0.3	0.3	0.5	0.3	0.4	0.5	0.4	0.4	0.5	0.6	0.4	0.6	0.5		
Other indictable offences	0.0	0.0	0.0	0.0	0.0	0.1	0.0	0.1	0.3	0.2	0.4	0.6	0.1	0.2	0.4	0.4	0.7	0.2	0.3	0.6	0.6	0.3	0.4	0.7	0.3	0.5	0.4		
Other summary offences	0.3	0.0	0.0	-	0.0	0.1	0.3	0.1	0.0	0.0	0.0	0.1	0.3	0.1	0.1	0.0	0.1	0.4	0.1	0.1	0.1	0.4	0.1	1.0	0.4	0.1	0.4		
Motoring offences	-	-	-	-	-	-	-	-	-	-	-	0.3	0.0	0.0	-	-	0.3	0.0	0.0	0.0	0.2	0.0	0.0	0.2	0.0	0.2	0.2		

Table 4 Cumulative percentage of the population with a custodial sentence, by age.

England and Wales							Percentage with a custodial sentence					
Age	Males						Females					
	Year of birth						Year of birth					
	1953	1958	1963	1968	1973	1978	1953	1958	1963	1968	1973	1978
10	-	-	-	-	-	-	-	-	-	-	-	-
11	0.1	0.1	-	-	-	-	-	-	-	-	-	-
12	0.3	0.1	-	-	-	-	-	-	-	-	-	-
13	0.5	0.1	-	-	-	-	-	-	-	-	-	-
14	0.8	0.3	0.4	0.3	0.1	-	-	-	-	-	-	-
15	1.2	0.7	0.9	0.8	0.3	0.2	0.1	-	-	-	-	-
16	1.7	1.3	1.6	1.4	0.6	0.5	0.1	0.1	-	-	-	-
17	2.5	2.2	2.6	2.1	1.0	1.1	0.1	0.1	0.1	0.1	-	0.1
18	3.3	2.9	3.5	2.8	1.6	1.8	0.1	0.1	0.1	0.1	0.1	0.1
19	3.9	3.5	4.3	3.5	2.3	2.7	0.1	0.2	0.2	0.2	0.1	0.2
20	4.2	3.9	4.9	4.0	2.8	3.4	0.2	0.2	0.2	0.2	0.1	0.3
21	4.5	4.3	5.4	4.3	3.5		0.2	0.2	0.3	0.2	0.2	
22	4.8	4.6	5.7	4.7	4.0		0.2	0.3	0.3	0.2	0.2	
23	5.0	5.0	6.0	5.0	4.5		0.2	0.3	0.3	0.2	0.3	
24	5.2	5.3	6.2	5.2	4.9		0.2	0.3	0.3	0.2	0.3	
25	5.4	5.5	6.4	5.4	5.3		0.3	0.4	0.4	0.3	0.4	
26	5.6	5.7	6.6	5.7			0.3	0.4	0.4	0.3		
27	5.7	5.9	6.7	6.0			0.3	0.4	0.4	0.3		
28	5.9	6.0	6.9	6.2			0.3	0.4	0.4	0.3		
29	6.1	6.2	7.0	6.5			0.3	0.5	0.4	0.4		
30	6.2	6.3	7.2	6.7			0.3	0.5	0.5	0.4		
31	6.3	6.4	7.3				0.4	0.5	0.5			
32	6.5	6.5	7.4				0.4	0.5	0.5			
33	6.6	6.5	7.6				0.4	0.5	0.5			
34	6.7	6.7	7.8				0.4	0.5	0.5			
35	6.7	6.7	7.9				0.4	0.5	0.6			
36	6.8	6.8					0.4	0.5				
37	6.9	6.9					0.4	0.5				
38	6.9	7.1					0.4	0.5				
39	7.0	7.2					0.4	0.6				
40	7.1	7.3					0.5	0.6				
41	7.1						0.5					
42	7.2						0.5					
43	7.3						0.5					
44	7.4						0.5					
45	7.5						0.5					

Table 5a Males born in 1953, 1958, 1963, 1968, 1973 or 1978 and convicted of a 'standard list' offence by number of court appearances.

England and Wales

Number of court appearances	Under 17						Under 21						Under 25					Under 30				Under 35			Under 40		Under 46
	1953	1958	1963	1968	1973	1978	1953	1958	1963	1968	1973	1978	1953	1958	1963	1968	1973	1953	1958	1963	1968	1953	1958	1963	1953	1958	1953
As a percentage of the total male population:																											
0	88.3	87.6	87.9	89.9	94.6	96.1	79.3	78.3	79.2	80.0	84.7	85.2	74.7	73.7	73.4	75.9	78.9	71.5	71.1	70.8	72.6	69.7	69.6	68.8	68.7	68.1	67.4
1	7.1	7.0	6.9	5.7	3.0	2.4	11.4	11.1	10.2	10.2	7.8	8.0	13.4	13.1	12.6	11.8	11.1	14.7	14.1	13.6	13.5	15.3	14.8	14.5	15.7	15.7	16.4
2	1.9	2.4	2.3	1.9	1.1	0.7	3.5	3.9	3.8	3.6	2.3	2.4	4.2	4.4	4.5	4.0	3.0	4.7	4.7	4.9	4.3	5.0	4.9	5.1	5.2	5.0	5.4
3	1.1	1.2	1.1	0.9	0.6	0.3	1.9	2.0	2.0	1.8	1.4	1.3	2.3	2.4	2.5	2.3	1.6	2.5	2.5	2.6	2.4	2.6	2.5	2.7	2.7	2.7	2.7
4	0.6	0.8	0.6	0.6	0.3	0.2	1.2	1.3	1.3	1.1	1.0	0.8	1.5	1.6	1.7	1.4	1.2	1.6	1.8	1.7	1.6	1.7	1.8	1.9	1.8	1.8	1.8
5	0.4	0.4	0.4	0.3	0.2	0.1	0.8	0.9	0.9	0.8	0.7	0.6	0.9	1.1	1.1	0.9	0.8	1.1	1.2	1.2	1.1	1.2	1.3	1.2	1.2	1.2	1.3
6-10	0.5	0.5	0.6	0.5	0.3	0.2	1.6	2.0	2.0	1.9	1.6	1.2	2.1	2.5	2.8	2.5	2.2	2.5	2.9	3.1	2.6	2.7	3.1	3.2	2.7	3.2	2.8
11-20	0.1	0.1	0.1	0.1	-	-	0.4	0.5	0.5	0.5	0.4	0.4	0.9	1.1	1.2	1.1	1.1	1.2	1.5	1.7	1.6	1.5	1.7	1.9	1.5	1.8	1.7
21 or more	-	-	-	-	-	-	-	-	0.1	-	-	-	0.1	0.1	0.2	0.1	0.1	0.2	0.2	0.3	0.4	0.3	0.4	0.6	0.4	0.5	0.5
As a percentage of male offenders:																											
1	61.1	56.1	56.8	56.7	54.6	59.6	55.1	51.3	49.1	51.2	51.4	54.3	52.7	49.7	47.3	48.9	52.5	51.5	48.7	46.5	49.1	50.6	48.6	46.7	50.2	49.2	50.2
2	16.4	19.2	19.4	18.8	19.8	17.3	16.9	17.8	18.0	18.1	15.0	16.3	16.7	16.7	17.0	16.8	14.1	16.5	16.2	16.7	15.7	16.5	16.1	16.4	16.6	15.6	16.6
3	9.7	10.0	9.5	9.4	10.4	7.6	9.2	9.0	9.8	9.2	9.1	8.8	9.2	9.1	9.3	9.4	7.7	8.8	8.8	9.1	8.6	8.6	8.3	8.6	8.5	8.4	8.4
4	5.0	6.5	5.1	5.8	5.5	5.4	5.6	6.2	6.2	5.6	6.3	5.4	5.8	6.1	6.4	6.0	5.5	5.5	6.1	6.0	5.9	5.6	6.0	6.0	5.7	5.7	5.6
5	3.3	3.0	3.2	3.4	3.1	2.9	3.9	4.1	4.3	3.8	4.5	4.0	3.4	4.3	4.1	3.7	4.0	4.0	4.2	4.1	3.9	3.9	4.2	4.0	3.8	3.9	3.9
6-10	3.9	4.4	4.7	4.8	5.7	6.0	7.5	9.2	9.6	9.6	10.7	8.1	8.4	9.5	10.7	10.3	10.3	8.8	10.1	10.6	9.6	8.9	10.0	10.3	8.7	10.1	8.6
11-20	0.4	0.8	1.0	1.0	0.9	1.2	1.7	2.2	2.6	2.4	2.8	2.9	3.4	4.2	4.6	4.4	5.4	4.3	5.1	5.9	5.8	4.9	5.5	6.2	4.9	5.7	5.1
21 or more	0.1	0.1	0.4	0.1	-	-	0.1	0.2	0.4	0.2	0.2	0.2	0.4	0.4	0.6	0.6	0.6	0.6	0.7	1.2	1.3	1.0	1.3	1.8	1.4	1.6	1.6
Percentage of court appearances attributable to offenders who had 1, 2, 3 etc. court appearances of offenders:																											
1	31.2	26.7	25.8	26.6	25.5	28.0	22.9	19.6	17.5	19.4	18.5	19.4	19.5	16.9	14.8	16.0	16.7	17.3	15.2	13.3	14.5	16.1	14.4	12.6	15.4	14.1	15.1
2	16.7	18.3	17.6	17.6	18.5	16.3	14.1	13.6	12.8	13.7	10.8	13.7	12.4	11.4	10.6	10.9	9.0	11.1	10.1	9.6	9.3	10.5	9.5	8.9	10.2	8.9	9.9
3	14.9	14.3	12.9	13.2	14.6	10.7	11.5	10.4	10.4	10.5	9.8	10.5	10.2	9.2	8.8	9.3	7.3	8.9	8.2	7.8	7.6	8.2	7.4	7.0	7.8	7.2	7.7
4	10.2	12.4	9.3	11.0	10.3	10.1	9.3	9.5	8.8	8.4	9.1	8.4	8.5	8.3	8.0	7.8	7.0	7.5	7.6	6.9	7.0	7.1	7.1	6.4	7.0	6.6	6.8
5	8.5	7.2	7.3	7.9	7.3	6.8	8.0	7.9	7.6	7.1	8.0	7.1	6.3	7.4	6.4	6.1	6.3	6.7	6.5	5.9	5.7	6.2	6.2	5.4	5.9	5.5	5.8
6-10	14.1	14.7	15.1	16.0	18.3	20.4	23.2	25.8	25.7	26.5	28.6	26.5	23.2	24.3	25.4	25.6	24.9	22.5	24.0	22.8	21.4	21.3	22.4	21.1	20.4	21.9	19.6
11-20	2.9	5.2	5.8	6.6	5.6	7.8	9.3	11.5	12.5	12.1	13.0	12.1	16.3	18.8	19.9	19.8	23.7	20.3	22.4	23.8	24.5	21.7	23.1	23.7	21.2	23.1	21.4
21 or more	1.5	1.2	6.2	1.1	-	-	1.7	1.8	4.7	2.3	2.2	2.3	3.6	3.8	6.2	4.6	5.1	5.9	6.0	10.0	10.0	8.9	9.9	15.1	12.2	12.7	13.9

Table 5b Females born in 1953, 1958, 1963, 1968, 1973 or 1978 and convicted of a 'standard list' offence by number of court appearances.

England and Wales

Number of court appearances	Under 17						Under 21						Under 25					Under 30				Under 35			Under 40		Under 46	
	1953	1958	1963	1968	1973	1978	1953	1958	1963	1968	1973	1978	1953	1958	1963	1968	1973	1953	1958	1963	1968	1953	1958	1963	1953	1958	1953	
As a percentage of the total female population:																												
0	98.2	97.9	97.8	98.5	99.3	98.8	96.3	95.4	95.1	96.4	97.3	97.0	94.8	93.7	93.8	95.3	96.1	93.2	92.5	92.8	94.4	92.4	91.9	92.2	91.9	91.4	91.3	
1	1.5	1.7	1.6	1.1	0.6	0.7	3.0	3.6	3.4	2.7	1.8	1.6	4.1	4.7	4.2	3.4	2.6	5.1	5.4	4.8	3.9	5.7	5.7	5.2	6.0	6.1	6.4	
2	0.2	0.3	0.4	0.2	0.1	0.2	0.5	0.6	0.8	0.5	0.4	0.5	0.7	0.9	1.0	0.7	0.5	1.0	1.1	1.2	0.8	1.1	1.2	1.3	1.1	1.3	1.2	
3	0.1	0.1	0.1	0.1	-	0.1	0.2	0.2	0.3	0.2	0.2	0.3	0.2	0.3	0.4	0.3	0.3	0.3	0.4	0.4	0.4	0.4	0.4	0.4	0.5	0.3	0.4	0.4
4	-	-	0.1	0.1	-	0.1	0.1	0.1	0.1	0.1	0.1	0.2	0.1	0.2	0.2	0.2	0.1	0.2	0.2	0.3	0.2	0.2	0.2	0.3	0.2	0.2	0.3	0.3
5	-	-	-	-	-	-	-	-	0.1	0.0	0.1	0.1	-	0.1	0.1	0.1	0.1	0.1	0.1	0.1	0.1	0.1	0.1	0.1	0.1	0.1	0.2	0.1
6-10	-	-	-	-	-	0.1	-	0.1	0.2	0.1	0.1	0.2	0.1	0.1	0.2	0.1	0.2	0.1	0.2	0.3	0.2	0.1	0.2	0.4	0.2	0.2	0.2	
11-20	-	-	-	-	-	-	-	-	-	-	-	0.1	-	-	-	0.1	-	-	-	-	-	0.1	0.1	0.1	0.1	0.1	0.1	
21 or more	-	-	-	-	-	-	-	-	-	-	-	-	-	-	-	-	-	-	-	-	-	-	-	-	-	-	-	
As a percentage of all female offenders:																												
1	82.3	79.9	72.5	74.1	75.4	59.6	79.9	77.4	69.7	73.5	68.5	54.3	78.2	74.2	67.5	70.8	66.1	75.7	72.4	66.4	69.5	74.3	71.0	66.4	74.2	71.0	74.3	
2	12.3	13.5	17.5	14.9	12.6	17.3	12.2	12.9	16.4	13.7	13.9	16.3	12.7	14.5	16.5	13.9	13.7	14.3	15.1	16.6	13.4	14.2	15.3	16.1	14.1	15.2	13.9	
3	2.8	2.8	5.6	5.5	4.4	7.6	4.5	4.0	6.0	6.0	6.5	8.8	4.0	4.7	6.1	7.0	6.8	4.0	5.0	6.2	6.7	4.7	5.3	6.3	4.2	5.1	4.1	
4	1.5	1.9	2.5	3.6	4.9	5.4	1.5	2.3	2.7	2.9	3.7	5.4	2.3	2.7	3.5	3.3	3.4	2.7	2.8	3.7	3.9	2.7	3.0	3.4	2.9	3.0	2.9	
5	0.2	0.3	0.6	0.4	0.5	2.9	0.8	0.8	1.4	0.9	1.9	4.0	0.9	1.4	1.6	1.6	2.6	0.9	1.7	2.0	1.7	1.2	1.9	1.8	1.0	2.1	1.0	
6-10	0.6	1.4	1.1	0.8	2.2	6.0	1.0	2.2	3.1	2.4	4.9	8.1	1.3	1.9	3.8	2.5	5.5	1.8	2.4	4.0	3.4	1.8	2.6	4.5	2.4	2.7	2.6	
11-20	0.2	0.2	0.3	0.6	-	1.2	0.1	0.3	0.6	0.6	0.6	2.9	0.5	0.6	0.9	0.6	1.6	0.6	0.5	1.0	0.9	0.9	0.6	1.4	0.9	0.8	1.0	
21 or more	-	-	-	-	-	-	-	0.1	-	-	-	0.2	-	0.1	0.1	0.3	0.3	-	0.1	0.2	0.3	0.1	0.2	0.3	0.2	0.2	0.2	
Percentage of court appearances attributable to offenders who had 1, 2, 3 etc. court appearances:																												
1	63.9	57.9	48.6	49.4	50.2	52.4	58.6	51.8	41.4	45.7	37.3	36.8	53.8	46.8	37.0	40.2	31.3	49.1	44.0	34.6	36.5	45.9	41.4	33.0	44.7	40.4	43.8	
2	19.1	19.6	23.4	19.8	16.7	23.2	17.9	17.2	19.5	17.1	15.1	15.5	17.5	18.2	18.1	15.8	13.0	18.5	18.3	17.3	14.1	17.6	17.9	16.0	17.0	17.3	16.4	
3	6.4	6.0	11.3	11.0	8.7	10.8	9.9	8.1	10.8	11.2	10.6	13.1	8.3	8.9	10.0	11.9	9.7	7.9	9.0	9.7	10.6	8.8	9.3	9.4	7.6	8.7	7.2	
4	4.6	5.5	6.8	9.6	13.1	9.6	4.3	6.3	6.5	7.1	8.1	10.4	6.4	6.9	7.8	7.5	6.4	6.9	6.8	7.6	8.3	6.7	7.0	6.7	7.1	6.9	6.8	
5	0.8	1.3	1.9	1.4	1.8	4.0	3.1	2.6	4.2	2.8	5.2	7.6	3.1	4.5	4.3	4.5	6.1	2.8	5.1	5.3	4.6	3.6	5.6	4.5	3.0	5.9	2.9	
6-10	3.3	7.2	5.5	3.8	9.5	-	5.4	10.1	13.0	10.6	18.9	13.2	6.6	8.9	15.3	10.6	18.5	8.7	10.5	15.9	13.3	8.1	11.2	17.3	10.2	11.4	11.0	
11-20	1.8	2.5	2.5	5.0	-	-	0.9	2.6	4.7	5.5	4.8	3.4	4.3	4.8	6.3	5.2	11.1	6.1	4.3	6.7	6.9	7.9	4.6	9.0	7.6	6.2	8.6	
21 or more	-	-	-	-	-	-	-	1.4	-	-	-	-	-	1.0	1.3	4.3	4.0	-	2.0	2.9	5.8	1.5	3.1	4.1	2.8	3.2	3.2	

Table 6 Percentage of offenders with at least one subsequent court appearance within 5 years of their first, by age of first appearance.

England and Wales							Percentage of offenders					
Age at first court appearance	Males Year of birth						Females Year of birth					
	1953	1958	1963	1968	1973	1978	1953	1958	1963	1968	1973	1978
10	58	70	67	78	76	50	25	35	50	50	100	-
11	61	72	77	66	67	79	28	19	67	45	50	-
12	62	68	71	66	72	92	23	35	49	24	40	33
13	54	68	73	66	80	79	34	29	48	44	60	80
14	56	61	66	67	77	76	29	29	44	30	47	57
15	48	59	62	64	69	70	22	33	39	39	42	61
16	51	50	58	58	64		21	29	33	36	44	
17	42	47	50	50	54		23	28	33	27	34	
18	40	39	45	44	46		18	23	25	27	37	
19	37	36	36	35	42		23	24	24	24	32	
20	31	30	29	31	36		22	22	26	21	28	
21	28	30	26	28			23	23	25	26		
22	27	27	27	24			12	17	19	20		
23	23	20	21	21			16	27	20	20		
24	22	19	22	21			25	19	17	12		
25	16	27	19	18			19	23	16	16		
26	23	17	19				17	17	25			
27	23	17	19				24	11	11			
28	21	19	13				25	29	27			
29	17	17	20				15	25	22			
30	18	19	20				15	15	23			
31	16	11					11	13				
32	15	15					19	17				
33	16	6					22	26				
34	11	18					23	23				
35	7	9					8	26				
36	12						18					
37	13						5					
38	7						10					
39	16						11					
40	13						14					

Table 7 Percentage with further court appearances, by number of previous court appearances:offenders born in 1953, 1958, 1963, 1968, 1973 or 1978.

England and Wales							Percentage of offenders					
Number of previous court appearances	Males						Females ⁽¹⁾					
	1953	1958	1963	1968	1973	1978	1953	1958	1963	1968	1973	1978
0	33	32	31	28	22	15	9	9	8	6	4	3
1	51	53	55	52	49	47	26	31	36	32	36	36
2	67	70	70	70	70	64	47	50	54	57	60	65
3	76	78	78	75	76	71	65	62	64	64	66	60
4	78	79	79	78	80	75	62	64	72	67	74	57
5	81	83	83	82	80	73	78	66	80	77	84	80
6	85	82	83	82	82	79	76	72	81	81	64	48
7	83	85	86	85	83	75	76	77	82	64	90	90
8	87	84	84	83	81	75	84	84	81	71	79	95
9	87	86	88	86	85	83	86	83	85	73	58	61
10	85	86	86	87	84	80	81	71	73	83	96	36
11	87	87	86	87	82	79	90	67	79	84	80	100
12	85	85	88	84	83	76	96	83	85	100	80	60
13	85	86	87	88	80	77	96	100	71	95	100	33
14	91	92	87	82	83	72	88	69	90	95	81	100
15	86	86	89	90	80	76	62	91	96	89	100	0
16	85	87	84	84	84	90	85	90	76	76	69	0
17	90	88	90	83	81	93	91	78	79	100	100	0
18	87	86	86	91	74	73	80	100	93	100	89	0
19	89	89	85	92	79	79	100	100	64	100	63	0
20 or more	91	88	91	86	84	74	77	84	93	88	90	0

⁽¹⁾ The analysis for female offenders with large numbers of previous convictions is based on small numbers of offenders, and is thus sensitive to fluctuation.

Table 8 Length of criminal career of offenders born in 1953.

England and Wales

Length of criminal career	Number of male offenders	Percentage of all male offenders	Number of female offenders	Percentage of all female offenders
less than 1 year	62,010	55	22,890	80
1 - <2	3,300	3	860	3
2 - <3	3,090	3	660	2
3 - <4	3,000	3	440	2
4 - <5	2,740	2	390	1
5 - <6	2,440	2	330	1
6 - <7	2,260	2	330	1
7 - <8	2,300	2	360	1
8 - <9	2,070	2	310	1
9 - <10	2,240	2	170	1
10 - <11	1,770	2	170	1
11 - <12	1,830	2	230	1
12 - <13	1,920	2	180	1
13 - <14	1,590	1	180	1
14 - <15	1,760	2	130	0
15 - <16	1,560	1	130	0
16 - <17	1,640	1	130	0
17 - <18	1,560	1	180	1
18 - <19	1,350	1	80	0
19 - <20	980	1	40	0
20 - <21	1,440	1	130	0
21 - <22	950	1	50	0
22 - <23	1,170	1	0	0
23 - <24	1,010	1	10	0
24 - <25	870	1	50	0
25 - <26	1,120	1	30	0
26 - <27	900	1	70	0
27 - <28	1,090	1	40	0
28 - <29	1,070	1	90	0
29 - <30	610	1	10	0
30 or more	3,090	3	70	0
Total	114,740	100	28,740	100

Table 9a Convicted males born in 1953, 1958, 1963, 1968, 1973 or 1978 who have received a custodial sentence in the period 1963-1999, by age.

England and Wales

Number of court appearances leading to custody	Under 17						Under 21						Under 25					Under 30				Under 35			Under 40		Under 46
	1953	1958	1963	1968	1973	1978	1953	1958	1963	1968	1973	1978	1953	1958	1963	1968	1973	1953	1958	1963	1968	1953	1958	1963	1953	1958	1953
	Estimated number of offenders																										
0	35160	42470	45580	36600	17150	10610	57940	67690	77760	67210	43570	35070	70760	80210	88840	79910	56930	78930	86770	96480	88330	83020	90630	101900	85400	94390	88500
1	4190	3650	5530	4070	1380	1120	9020	8790	12420	9870	6510	6510	10000	10730	15070	12130	10010	11280	12440	17120	15300	12390	13380	18900	13230	14690	14110
2	1300	790	1260	1200	350	230	2890	3110	4390	3210	1680	1780	3690	3810	5060	3940	3070	3990	3990	5490	4450	4080	4330	6020	4280	4430	4630
3	310	260	230	340	120	90	1640	1290	2120	1600	790	660	1790	2090	2820	1910	1610	2110	2440	2820	2090	2330	2540	2980	2370	2470	2430
4	80	50	70	140	30	40	730	900	1030	1130	340	610	1110	1250	1760	1480	790	1240	1400	1950	1740	1370	1430	1960	1390	1570	1440
5	10	70	10	70	10	50	380	550	640	440	220	330	790	810	1080	680	570	880	960	1310	960	870	1040	1250	910	1090	880
6 to 10	10	10	80	50	30	.	270	310	480	570	200	400	990	1290	1590	1440	790	1650	1920	2250	2200	1920	2200	2860	1940	2440	2030
11 or more	10	10	30	10	.	.	10	10	100	30	.	.	40	40	160	90	80	200	230	380	330	460	380	640	590	470	720
All	41070	47310	52790	42480	19070	12140	72880	82650	98940	84060	53310	45360	89170	100230	116380	101580	73850	100280	110150	127800	115400	106440	115930	136510	110110	121550	114740
Percentage of male offenders																											
0	85.6%	89.8%	86.3%	86.2%	89.9%	87.4%	79.5%	81.9%	78.6%	80.0%	81.7%	77.3%	79.4%	80.0%	76.3%	78.7%	77.1%	78.7%	78.8%	75.5%	76.5%	78.0%	78.2%	74.6%	77.6%	77.7%	77.1%
1	10.2%	7.7%	10.5%	9.6%	7.2%	9.2%	12.4%	10.6%	12.6%	11.7%	12.2%	14.4%	11.2%	10.7%	12.9%	11.9%	13.6%	11.2%	11.3%	13.4%	13.3%	11.6%	11.5%	13.8%	12.0%	12.1%	12.3%
2	3.2%	1.7%	2.4%	2.8%	1.8%	1.9%	4.0%	3.8%	4.4%	3.8%	3.2%	3.9%	4.1%	3.8%	4.3%	3.9%	4.2%	4.0%	3.6%	4.3%	3.9%	3.8%	3.7%	4.4%	3.9%	3.6%	4.0%
3	0.8%	0.5%	0.4%	0.8%	0.6%	0.7%	2.3%	1.6%	2.1%	1.9%	1.5%	1.5%	2.0%	2.1%	2.4%	1.9%	2.2%	2.1%	2.2%	2.2%	1.8%	2.2%	2.2%	2.2%	2.2%	2.0%	2.1%
4	0.2%	0.1%	0.1%	0.3%	0.2%	0.3%	1.0%	1.1%	1.0%	1.3%	0.6%	1.3%	1.2%	1.2%	1.5%	1.5%	1.1%	1.2%	1.3%	1.5%	1.5%	1.3%	1.2%	1.4%	1.3%	1.3%	1.3%
5	.	0.1%	.	0.2%	0.1%	0.4%	0.5%	0.7%	0.6%	0.5%	0.4%	0.7%	0.9%	0.8%	0.9%	0.7%	0.8%	0.9%	0.9%	1.0%	0.8%	0.8%	0.9%	0.9%	0.8%	0.9%	0.8%
6 to 10	.	.	0.2%	0.1%	0.2%	.	0.4%	0.4%	0.5%	0.7%	0.4%	0.9%	1.1%	1.3%	1.4%	1.4%	1.1%	1.6%	1.7%	1.8%	1.9%	1.8%	1.9%	2.1%	1.8%	2.0%	1.8%
11 or more	0.1%	0.1%	0.1%	0.1%	0.2%	0.2%	0.3%	0.3%	0.4%	0.3%	0.5%	0.5%	0.4%	0.6%
Percentage of offenders given custody																											
1	70.9%	75.4%	76.7%	69.2%	71.9%	73.2%	60.4%	58.8%	58.6%	58.6%	66.8%	63.3%	54.3%	53.6%	54.7%	56.0%	59.2%	52.8%	53.2%	54.7%	56.5%	52.9%	52.9%	54.6%	53.5%	54.1%	53.8%
2	22.0%	16.3%	17.5%	20.4%	18.2%	15.0%	19.3%	20.8%	20.7%	19.1%	17.2%	17.3%	20.0%	19.0%	18.4%	18.2%	18.1%	18.7%	17.1%	17.5%	16.4%	17.4%	17.1%	17.4%	17.3%	16.3%	17.6%
3	5.2%	5.4%	3.2%	5.8%	6.3%	5.9%	11.0%	8.6%	10.0%	9.5%	8.1%	6.4%	9.7%	10.4%	10.2%	8.8%	9.5%	9.9%	10.4%	9.0%	7.7%	9.9%	10.0%	8.6%	9.6%	9.1%	9.3%
4	1.4%	1.0%	1.0%	2.4%	1.6%	2.6%	4.9%	6.0%	4.9%	6.7%	3.5%	5.9%	6.0%	6.2%	6.4%	6.8%	4.7%	5.8%	6.0%	6.2%	6.4%	5.8%	5.7%	5.7%	5.6%	5.8%	5.5%
5	0.2%	1.4%	0.1%	1.2%	0.5%	3.3%	2.5%	3.7%	3.0%	2.6%	2.3%	3.2%	4.3%	4.0%	3.9%	3.1%	3.4%	4.1%	4.1%	4.2%	3.5%	3.7%	4.1%	3.6%	3.7%	4.0%	3.4%
6 to 10	0.2%	0.2%	1.1%	0.9%	1.6%	.	1.8%	2.1%	2.3%	3.4%	2.1%	3.9%	5.4%	6.4%	5.8%	6.6%	4.7%	7.7%	8.2%	7.2%	8.1%	8.2%	8.7%	8.3%	7.9%	9.0%	7.7%
11 or more	0.2%	0.2%	0.4%	0.2%	.	.	0.1%	0.1%	0.5%	0.2%	.	.	0.2%	0.2%	0.6%	0.4%	0.5%	0.9%	1.0%	1.2%	1.2%	2.0%	1.5%	1.8%	2.4%	1.7%	2.7%

Table 9b Convicted females born in 1953, 1958, 1963, 1968, 1973 or 1978 who have received a custodial sentence in the period 1963-1999, by age.

England and Wales

Number of court appearances leading to custody

	Under 17						Under 21						Under 25					Under 30				Under 35			Under 40		Under 46		
	1953	1958	1963	1968	1973	1978	1953	1958	1963	1968	1973	1978	1953	1958	1963	1968	1973	1953	1958	1963	1968	1953	1958	1963	1953	1958	1953	1958	1953
Estimated number of offenders																													
0	5870	7300	9140	6100	2160	2190	11970	16010	19490	13790	7560	7270	16610	2157	24270	17920	11530	21420	25370	28010	20980	23940	27150	30210	25570	28780	27000		
1	230	160	120	20	110	80	460	460	720	550	500	650	610	810	1080	730	860	820	1180	1440	1120	1090	1300	1790	1140	1470	1370		
2	.	30	40	0	50	30	30	130	90	70	260	90	80	200	140	130	100	120	250	180	160	100	300	260	130	330	170		
3	30	.	10	70	40	40	180	10	50	30	70	80	100	70	40	100	30	70	40	140	80	40	80		
4	.	.	10	.	10	.	.	10	70	30	100	10	10	120	80	10	10	10	120	50	70	70	120	40	40	90	40		
5	10	.	.	.	10	.	.	.	10	10	90	.	.	.	30	30	10	10	10	30	10	10	30	40	30	40	10		
6 to 10	10	.	10	10	.	10	100	.	10	30	30	40	10	30	40	50	50	40	40	70	50	50	70		
11 or more	10	10		
All	6110	7490	9310	6120	2380	2300	12480	16690	20420	14500	8790	8030	17370	22740	25700	18950	12620	22480	27010	29860	22430	25320	28980	32550	27040	30800	28740		

Percentage of female offenders

0	96.1%	97.5%	98.2%	99.7%	90.8%	95.2%	95.9%	95.9%	95.4%	95.1%	86.0%	90.5%	95.6%	9.5%	94.4%	94.6%	91.4%	95.3%	93.9%	93.8%	93.5%	94.5%	93.7%	92.8%	94.6%	93.4%	93.9%
1	3.8%	2.1%	1.3%	0.3%	4.6%	3.5%	3.7%	2.8%	3.5%	3.8%	5.7%	8.1%	3.5%	3.6%	4.2%	3.9%	6.8%	3.6%	4.4%	4.8%	5.0%	4.3%	4.5%	5.5%	4.2%	4.8%	4.8%
2	.	0.4%	0.4%	0.0%	2.1%	1.3%	0.2%	0.8%	0.4%	0.5%	3.0%	1.1%	0.5%	0.9%	0.5%	0.7%	0.8%	0.5%	0.9%	0.6%	0.7%	0.4%	1.0%	0.8%	0.5%	1.1%	0.6%
3	1.3%	.	0.1%	0.4%	0.2%	0.3%	2.0%	0.1%	0.3%	0.1%	0.3%	0.4%	0.8%	0.3%	0.1%	0.3%	0.1%	0.3%	0.1%	0.4%	0.3%	0.1%	0.3%
4	.	.	0.1%	.	0.4%	.	.	0.1%	0.3%	0.2%	1.1%	0.1%	0.1%	0.5%	0.3%	0.1%	0.1%	0.0%	0.4%	0.2%	0.3%	0.3%	0.4%	0.1%	0.1%	0.3%	0.1%
5	0.2%	.	.	.	0.4%	.	.	.	0.0%	0.1%	1.0%	.	.	.	0.1%	0.2%	0.1%	0.0%	0.0%	0.1%	0.0%	0.0%	0.1%	0.1%	0.1%	0.1%	0.0%
6 to 10	0.4%	.	0.1%	0.1%	.	0.1%	1.1%	.	0.1%	0.1%	0.1%	0.2%	0.1%	0.1%	0.1%	0.2%	0.2%	0.2%	0.1%	0.2%	0.2%	0.2%	0.2%
11 or more	0.1%	0.0%

Percentage of offenders given custody

1	95.8%	84.2%	70.6%	100.0%	50.0%	72.7%	90.2%	67.6%	77.4%	77.5%	40.7%	52.8%	80.3%	68.1%	75.5%	70.9%	78.9%	77.4%	72.0%	77.8%	77.2%	79.0%	71.0%	76.5%	77.6%	72.8%	78.7%
2	.	15.8%	23.5%	0.0%	22.7%	27.3%	5.9%	19.1%	9.7%	9.9%	21.1%	7.3%	10.5%	16.8%	9.8%	12.6%	9.2%	11.3%	15.2%	9.7%	11.0%	7.2%	16.4%	11.1%	8.8%	16.3%	9.8%
3	13.6%	.	2.0%	10.3%	4.3%	5.6%	14.6%	0.8%	6.6%	2.5%	4.9%	7.8%	9.2%	6.6%	2.4%	5.4%	2.1%	5.1%	2.2%	6.0%	5.4%	2.0%	4.6%
4	.	.	5.9%	.	4.5%	.	.	1.5%	7.5%	4.2%	8.1%	0.8%	1.3%	10.1%	5.6%	1.0%	0.9%	0.9%	7.3%	2.7%	4.8%	5.1%	6.6%	1.7%	2.7%	4.5%	2.3%
5	4.2%	.	.	.	4.5%	.	.	.	1.1%	1.4%	7.3%	.	.	.	2.1%	2.9%	0.9%	0.9%	0.6%	1.6%	0.7%	0.7%	1.6%	1.7%	2.0%	2.0%	0.6%
6 to 10	4.5%	.	2.0%	1.5%	.	1.4%	8.1%	.	1.3%	2.5%	2.1%	3.9%	0.9%	2.8%	2.4%	2.7%	3.4%	2.9%	2.2%	3.0%	3.4%	2.5%	4.0%
11 or more	1.0%	0.7%

NOTES

Data sources

1. The estimates in this bulletin are based on data from the Offenders Index, a database which contains the criminal histories of all those people convicted of a standard list offence, in England and Wales, from 1963. Each criminal history includes information on the offender's court appearances with, in each case, the offence for which he or she has been convicted and the sentence imposed by the court. The database has been built up from reports on court appearances submitted by courts and the police to the Home Office.

2. Offenders with identical surname, initials, gender, date of birth and, if present, Criminal Record Office number are automatically linked on the database. Some records for an offender come in with mis-spelt surnames, differing numbers of initials etc and are not immediately linked. Once a sample of offenders has been selected for analysis then computer programs with matching software are run which try to identify offenders with similar details; the output is inspected manually and records merged as necessary.

3. Six cohort samples have been extracted from the Index, one for each of the years 1953, 1958, 1963, 1968, 1973 and 1978. Each cohort contains the offenders on the Index who were born in four weeks of the year, one week in each quarter. The same four weeks are used for each cohort. The weeks are 3-9 March, 19-25 June, 28 September - 4 October and 17-23 December.

4. Comparisons between cohorts are affected by changes in the proportion of known offenders cautioned. No information on cautioning is held on the Index.

5. At the time of preparing the bulletin the Index covered convictions up until the end of 1999. All six cohorts have been updated to include this information.

6. When analysing the information we have ignored convictions that occur on or after the oldest age covered in the particular cohort because we have incomplete information for that year. For example, in the 1953 cohort we have ignored convictions from age 46 onwards because we have only those convictions that occurred from the offender's 46th birthday to the end of 1999, a length of time that varies according to birth date.

Population estimates

7. The procedure used to obtain population estimates was to multiply the cohort result by 13 to give an estimate of the number of offenders we would have obtained if we had taken all offenders born in the year (i.e. 52 weeks) concerned. Proportions of the general population were then obtained by relating this estimate to the number of live births in the cohort year, separately for males and females. The numbers of live births in the cohort years were as follows:

Cohort	Males	Females
1953	352,000	332,000
1958	381,000	360,000
1963	438,000	416,000
1968	421,000	398,000
1973	349,000	327,000
1978	307,000	289,000

This method of estimation can only be approximate because it takes no account of losses and gains to the population and the sample of offenders through death and migration.

8. The accuracy of the estimates is dependent on the ability to match all an individuals criminal convictions together. Both computerised and manual matching of individuals criminal records are used to ensure that all convictions for a given person are linked together. It is possible, however, that some names which enter the Offenders Index system may refer to one individual but their linking details are so dissimilar that it is not possible to match the offender records together.

9. Estimates based on Index data are under-estimates of the rate of known offending because they exclude convictions for offences not on the standard list and cautions, reprimands, and final warnings for all offences. In addition, as in all large-scale data collections, some data will be missing from the Index or miscoded. The Index cannot record offences which do not come to the notice of the police so the true rate of offending will be higher than the known rate of offending.

Offence codes

10. The offences covered by the Index are those on the 'standard list'. This includes all indictable offences (including those triable either way) and certain summary offences. The current list of 'standard list' offences is given in Appendices 4 and 5 of Criminal Statistics 1999 (Cm 5001). There have been changes in the 'standard list' over time and when analysing the cohorts it is necessary to take these into account. The most recent changes took place in 1995 and 1996, when several offences (including all categories of common assault, driving whilst disqualified, driving with excess alcohol, and dangerous driving) were added to the 'standard list'. The inclusion of these offences increased the overall number of standard list offences recorded in 1996 by close to 100,000 offences to 450,000.

11. The aim in grouping offences has been to group similar offences together regardless of whether they are indictable or summary. This is a different approach to the one used in Criminal Statistics where the distinction between indictable and summary is retained.

12. The groupings used in tables B, 3a and 3b are similar to those used in Criminal Statistics. The main differences are noted below:

Violence against the person: includes blackmail, kidnapping, rioting, violent disorder and firearms offences (all included under 'other' indictable offences in Criminal Statistics), and summary offence of assault on a constable; common assault was included from 1996.

Sexual offences: includes possession of obscene material (included under 'other' indictable offences in Criminal Statistics), and summary offences of indecent exposure and prostitute offences.

Theft and handling stolen goods (subdivision not given in Criminal Statistics)

Theft of a vehicle: includes various summary offences concerning interference with a motor vehicle, stealing and unauthorised taking.

Other theft and handling: includes various summary offences concerning stealing and unauthorised possession.

Criminal Damage: includes summary offences of criminal damage.

Drug offences: includes summary offences relating to misuse of drugs.

Other indictable offences: includes public order, betting and gaming offences, and perverting the course of justice.

Other summary offences: includes possession of an offensive weapon, vagrancy, frequenting a public place with intent to commit an arrestable offence, immigration act offences.

Motoring offences: includes dangerous driving, driving whilst disqualified, and driving with excess alcohol.

13. A full listing of the offence codes included in each offence group and the years in which they applied is available from the address in paragraph 18 below.

Disposal codes

14. Tables 4 and 9 relate to experience of immediate custody. During the period covered by the cohorts there have been changes in the sentences available to the courts. In this bulletin the term immediate custody includes:

Unsuspended imprisonment (applies to offenders aged 17 or over until mid-1983, then to those aged 21 and over), including preventive detention and corrective training (both 1963-1967)

Partly suspended sentences (1982-1992, apply to offenders aged 21 and over)

Custodial sentences for young offenders (i.e. those aged under 21) including

Approved school (until 1970, aged under 17)

Detention centre (until 1988, aged 14 and over)

Borstal training (until 1983, aged 15 and over)
Youth custody (1983-1988, aged 14 and over)
Young Offender Institution (1988 onwards, aged 14 and over, 15 from 1992)
Custody for life (aged 17 and over)

Custody under Children and Young Persons Act 1933 Sections 53(1) (HMP), 53(2) and 54 (until 1970) (applies to those aged under 17).

Comparison with earlier results

15. Information from the cohorts was last published in a statistical bulletin in 1995, when the 1953, 1968, and 1973 cohorts had been followed up until 1993 and the 1958 and 1963 cohorts had been followed up until 1992. Material from this statistical bulletin has been included in the Criminal Statistics Command paper. There are a number of reasons why the information in this bulletin differs from that in previous bulletins:

a. The computerised matching procedures were updated in 2000. This has allowed for better identification of offenders originally entered as separate individuals but subsequently recognised to be the same person. This merging of offender records means that the latest analysis is based on a smaller number of offenders than it would have been previously, but that the criminal histories of those in the cohort are longer.

b. Each court appearance record contains a field with the date of the previous court appearance (if any) for the offender. In some earlier bulletins, searches were carried out at the National Identification Bureau (NIB) for missing court appearances and if found they were included in the analysis. This is no longer done because of the resources it requires and because the date of previous appearance field is not reliably completed. This means that in the latest analysis some offenders will have fewer court appearances than previously.

c. For the 1953 cohort it was possible to be convicted before the age of 10 (the age of criminal responsibility was raised from 8 to 10 in February 1964). However, because the Index data starts in 1963 we have only some convictions before the age of 10 (i.e. those in 1963 before an offender's tenth birthday). In this analysis we have ignored any convictions before age 10.

d. Offence groupings have been slightly revised and breach offences (only present in the earlier cohorts) have been deleted.

e. In this bulletin all analysis of frequency of offending is based on court appearances rather than convictions, which were used in some tables in earlier bulletins. This is because it is known that some conviction data is missing. Pre-1990, where several identical convictions were received at one court appearance, only one conviction record is held.

16. Earlier results from some of the cohort samples were published in 'Analysing Offending' by Roger Tarling (HMSO, 1993) and in the following Home Office Statistical Bulletins:

- 7/85 Criminal careers of those born in 1953, 1958 and 1963
35/87 Criminal careers of those born in 1953: persistent offenders and desistance
27/89 Criminal careers of those born in 1953 and 1963: variations in sentencing with the number of court appearances
32/89 Criminal and custodial careers of those born in 1953, 1958 and 1963
14/95 Criminal careers of those born between 1953 and 1973

Symbols

17. The following symbols are used in the tables:

- = nil or negligible
- .. = not available

Enquiries

18. Members of the Criminal Careers Section of the Offenders and Corrections Unit within the Research Development and Statistics Directorate of the Home Office have prepared this bulletin. As well as the authors there were valuable contributions from Philip Howard, Andrew Kalinsky, and staff within the Home Office Data Collection Group. If you have any enquiries about figures in this bulletin or wish to request further analysis of the data (for which there may be a charge) you should contact Julian Prime or any member of the Criminal Careers Section. The contact details are:

Criminal Careers Section
Offenders and Corrections Unit
Research Development and Statistics Directorate
Room 258
Home Office
50 Queen Anne's Gate
London SW1H 9AT. Telephone 020 7273 3177
Email: julian.prime@homeoffice.gsi.gov.uk

Further copies of this and other Research, Development and Statistics Directorate publications can be obtained by contacting:

Communication and Development Unit
Research Development and Statistics Directorate
Room 201
Home Office
50 Queen Anne's Gate
London SW1H 9AT. Telephone 020 7273 2084
Email: publications.rds@homeoffice.gsi.gov.uk

Many publications are also downloadable from the RDS website at:
<http://www.homeoffice.gov.uk/rds/index.htm>

Press enquiries should be made to:

Home Office Press Office
Communication Directorate
50 Queen Anne's Gate
London SW1H 9AT.

Telephone 020 7273 4545

RESEARCH DEVELOPMENT AND STATISTICS DIRECTORATE MISSION STATEMENT

RDS is part of the Home Office. The Home Office's purpose is to build a safe, just and tolerant society in which the rights and responsibilities of individuals, families and communities are properly balanced and the protection and security of the public are maintained.

RDS is also a part of the Government Statistical Service (GSS). One of the GSS aims is to inform Parliament and the citizen about the state of the nation and provide a window on the work and performance of government, allowing the impact of government policies and actions to be assessed.

Therefore -

Research Development and Statistics Directorate exists to improve policy making, decision taking and practice in support of the Home Office purpose and aims, to provide the public and Parliament with information necessary for informed debate and to publish information for future use.
