



Research Development Statistics

# POPULATION IN CUSTODY AUGUST 2004 England and Wales

## MONTHLY TABLES

Quarterly population in custody statistical brief is available on the Home Office website.

<http://www.homeoffice.gov.uk/rds/index.htm>

Abell House,  
John Islip Street, London  
SW1P 4LH  
Direct Line 020 7217  
5078 Fax 020 7217 5770

E-mail:  
rdsnomsstatistics  
@homeoffice.gsi.gov.uk

**Press enquiries - Press  
Office  
020 7273 4545**

### Key points

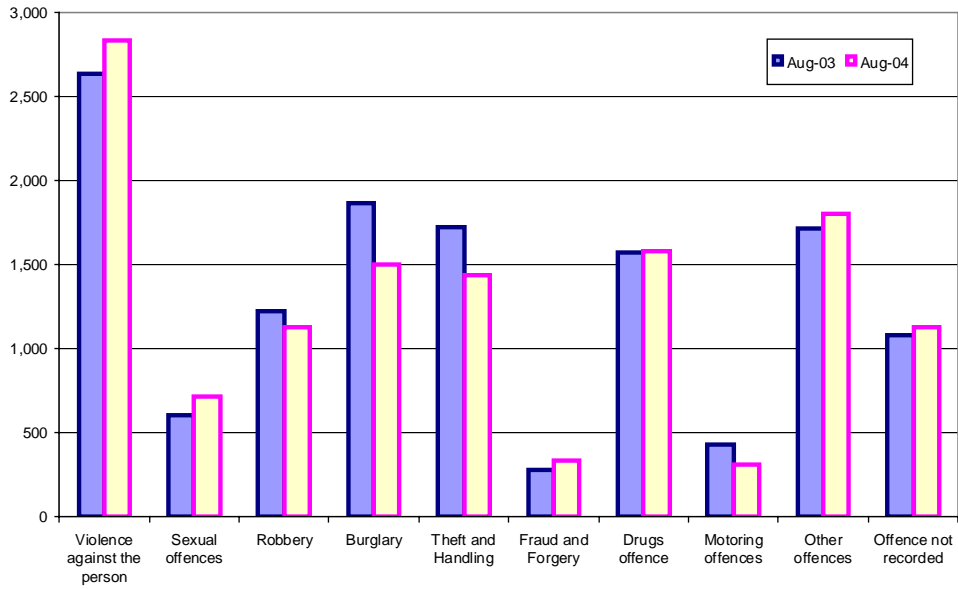
#### *Population in custody*

- The population in custody on 31 August 2004 was 75,526, an increase of 3 per cent on a year earlier. The population in prisons was 75,057, in Secure Training Centres (STCs) it was 205, and in Local Authority Secure Children's Homes (LASCHs) it was 264.
- The male prison population increased by 3 per cent to 70,597 while the female population increased by 2 per cent to 4,460.

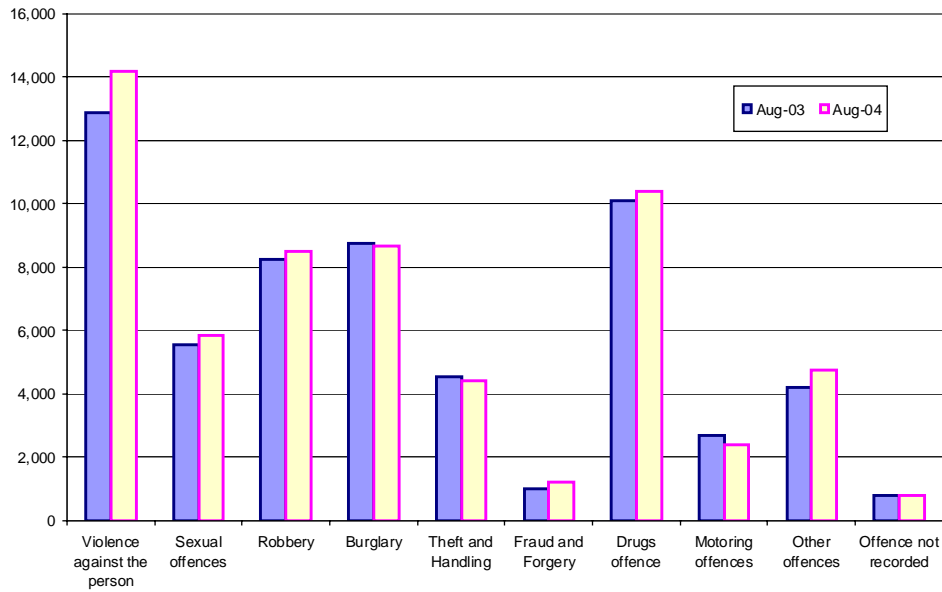
#### *Population in prison*

- The remand population in prison fell by 3 per cent to 12,748 by August 2004 compared to August 2003. Within this total, untried prisoners numbers increased by 3 per cent to 8,222 while the convicted unsentenced population decreased by 12 per cent to 4,526.
- Amongst the remand prisoner population the fraud and forgery offence group recorded the highest proportionate increase of 21 per cent during the previous 12 months, whilst the motoring offence group saw a decrease of 29 per cent.
- There were 61,158 sentenced prisoners at 31 August 2004, an increase of 4 per cent compared to the previous year. Those sentenced to 4 years or more (excluding life) increased the most (5 per cent) compared to 12 months ago, whilst those sentenced for less than or equal to 6 months and greater than 6 months to less than 12 months increased by only 2 per cent.
- Amongst the sentenced prisoner population the fraud and forgery recorded the highest increase of 20 per cent compared to August 2003. The motoring offences group saw a decrease of 10 per cent. Females sentenced for drugs offences fell by 7 per cent, those sentenced for other offences increased by 35 per cent.
- The young adult population in prisons was 8,584 at 31 August 2004, 0.2 per cent less than 12 months before, whilst the population of 15-17 year olds increased by 3 per cent.
- The prison population was 110 per cent of the 'In Use CNA' (68,149) at 31 August 2004.

Remand population by offence group



Immediate custodial sentenced population by offence group



## NOTES

### Data sources

Prison establishments routinely provide records of the numbers of persons held in custody at the end of each month, broadly subdivided according to age, sex, custody type and sentence length. The records are collated and processed centrally, to produce the main estimates of end-month population presented in tables 1 and 4 of this output. Establishments also record electronically details for individual inmates such as date of birth, sex, religion, ethnic origin, custody type, offence, and reception and discharge dates and, for sentenced prisoners, sentence length. These data are collected on a central computer database and are used to produce the analyses by offence group and individual year of age. They form the basis of detailed population breakdowns, supplementing the aggregates derived from establishments' monthly population returns to which they are scaled for consistency. A new more detailed method of scaling this information was developed in 2004. Individual components may not sum to the totals which are calculated and rounded independently.

The information given here remains subject to inaccuracies inherent in any large-scale centralised recording system. While the figures shown have been checked as far as practicable, they must be approximate and not necessarily accurate to the last digit shown. All figures are provisional pending publication of the annual Offender Management statistical publication.

Information on the population in STCs and LASCHs has been supplied by the Youth Justice Board.

### Definitions

Population in custody - this includes those held in prison establishments, police cells under Operation Safeguard, secure training centres (STCs) and Local Authority secure children's homes (LASCHs). This is a change to previous outputs (notably Prison Population Monthly Brief and Prison Statistics England and Wales) where the reference to 'population in custody' just covered those held in prison establishments and police cells. All coverage is for England and Wales.

Population in prison – this includes those held in prison establishments in England and Wales, including the three removal centres of Dover, Haslar and Lindholme.

Sentenced population – this includes those sentenced to an immediate custodial sentence and fine defaulters.

Immediate custodial sentence – this does not include fine defaulters.

Adult prisoners – these are prisoners aged 21 years and over.

Young adults – these are prisoners aged 18 to 20, but including 21 year old prisoners who were aged 20 or under at conviction who have not been reclassified as part of the adult population.

**Table 1: Population in custody: by type of custody and sex**

	Aug-03			Aug-04			Percentage change 2003 to 2004		
	Males	Females	Total	Males	Females	Total	Males	Females	Total
<b>All population in custody, of which</b>	<b>68,977</b>	<b>4,501</b>	<b>73,478</b>	<b>70,940</b>	<b>4,586</b>	<b>75,526</b>	<b>3</b>	<b>2</b>	<b>3</b>
Prisons	68,598	4,394	72,992	70,597	4,460	75,057	3	2	3
Police cells	0	0	0	0	0	0	*	*	*
LASCHs	264	49	313	210	54	264	-20	10	-16
STCs	115	58	173	133	72	205	16	24	18
<b>All population in prison, of which</b>	<b>68,598</b>	<b>4,394</b>	<b>72,992</b>	<b>70,597</b>	<b>4,460</b>	<b>75,057</b>	<b>3</b>	<b>2</b>	<b>3</b>
<b>Remand</b>	<b>12,079</b>	<b>1,019</b>	<b>13,098</b>	<b>11,806</b>	<b>942</b>	<b>12,748</b>	<b>-2</b>	<b>-8</b>	<b>-3</b>
untried	7,435	545	7,980	7,628	594	8,222	3	9	3
convicted unsentenced	4,644	474	5,118	4,178	348	4,526	-10	-27	-12
<b>Under sentence</b>	<b>55,449</b>	<b>3,331</b>	<b>58,780</b>	<b>57,678</b>	<b>3,480</b>	<b>61,158</b>	<b>4</b>	<b>4</b>	<b>4</b>
Fine defaulter	41	2	43	56	4	60	37	*	40
Less than or equal to 6 months	5,328	436	5,764	5,433	467	5,900	2	7	2
Greater than 6 months to less than 12 months	2,064	166	2,230	2,058	221	2,279	0	34	2
12 months to less than 4 years	19,357	1,289	20,646	19,963	1,340	21,303	3	4	3
4 years or more (excluding Life)	23,399	1,270	24,669	24,695	1,268	25,963	6	0	5
Life	5,260	168	5,428	5,473	180	5,653	4	7	4
<b>Non-criminal prisoners</b>	<b>1,070</b>	<b>44</b>	<b>1,114</b>	<b>1,113</b>	<b>38</b>	<b>1,151</b>	<b>4</b>	<b>-14</b>	<b>3</b>
<b>All adult population in prison, of which</b>	<b>58,258</b>	<b>3,873</b>	<b>62,131</b>	<b>60,210</b>	<b>3,936</b>	<b>64,146</b>	<b>3</b>	<b>2</b>	<b>3</b>
<b>Remand</b>	<b>9,736</b>	<b>860</b>	<b>10,596</b>	<b>9,426</b>	<b>798</b>	<b>10,224</b>	<b>-3</b>	<b>-7</b>	<b>-4</b>
untried	6,029	454	6,483	6,128	505	6,633	2	11	2
convicted unsentenced	3,707	406	4,113	3,298	293	3,591	-11	-28	-13
<b>Under sentence</b>	<b>47,541</b>	<b>2,971</b>	<b>50,512</b>	<b>49,784</b>	<b>3,102</b>	<b>52,886</b>	<b>5</b>	<b>4</b>	<b>5</b>
Fine defaulter	38	2	40	52	4	56	37	*	40
Less than or equal to 6 months	4,041	377	4,418	4,202	392.65	4,594	4	4	4
Greater than 6 months to less than 12 months	1,481	141	1,622	1,471	184.35	1,656	-1	31	2
12 months to less than 4 years	15,231	1,097	16,328	15,890	1,159	17,049	4	6	4
4 years or more (excluding Life)	21,636	1,195	22,831	22,855	1,192	24,047	6	0	5
Life	5,114	159	5,273	5,314	170	5,484	4	7	4
<b>Non-criminal prisoners</b>	<b>981</b>	<b>42</b>	<b>1,023</b>	<b>1,000</b>	<b>36</b>	<b>1,036</b>	<b>2</b>	<b>-14</b>	<b>1</b>
<b>All 15 -17 year olds in prison, of which</b>	<b>2,190</b>	<b>66</b>	<b>2,256</b>	<b>2,254</b>	<b>73</b>	<b>2,327</b>	<b>3</b>	<b>10</b>	<b>3</b>
<b>Remand</b>	<b>500</b>	<b>19</b>	<b>519</b>	<b>527</b>	<b>19</b>	<b>546</b>	<b>5</b>	<b>0</b>	<b>5</b>
untried	331	14	345	364	8	372	10	*	8
convicted unsentenced	169	5	174	164	11	174	-3	*	0
<b>Under sentence</b>	<b>1,690</b>	<b>48</b>	<b>1,737</b>	<b>1,724</b>	<b>53</b>	<b>1,777</b>	<b>2</b>	<b>12</b>	<b>2</b>
Fine defaulter	0	0	0	0	0	0	*	*	*
Less than or equal to 6 months	417	13	429	431	18	449	3	41	4
Greater than 6 months to less than 12 months	262	7	269	261	8	269	0	*	0
12 months to less than 4 years	875	24	899	871	23	895	0	-2	0
4 years or more (excluding Life)	123	4	127	146	4	150	19	*	18
Life	14	0	14	15	0	15	9	*	9
<b>Non-criminal prisoners</b>	<b>0</b>	<b>0</b>	<b>0</b>	<b>3</b>	<b>1</b>	<b>4</b>	<b>*</b>	<b>*</b>	<b>*</b>
<b>All young adults in prison, of which</b>	<b>8,150</b>	<b>455</b>	<b>8,605</b>	<b>8,133</b>	<b>451</b>	<b>8,584</b>	<b>0</b>	<b>-1</b>	<b>0</b>
<b>Remand</b>	<b>1,843</b>	<b>140</b>	<b>1,983</b>	<b>1,853</b>	<b>125</b>	<b>1,978</b>	<b>1</b>	<b>-11</b>	<b>0</b>
untried	1,075	77	1,152	1,136	81	1,217	6	5	6
convicted unsentenced	768	63	831	716	44	761	-7	-30	-8
<b>Under sentence</b>	<b>6,218</b>	<b>312</b>	<b>6,531</b>	<b>6,170</b>	<b>325</b>	<b>6,495</b>	<b>-1</b>	<b>4</b>	<b>-1</b>
Fine defaulter	3	0	3	4	0	4	*	*	*
Less than or equal to 6 months	871	47	917	801	56	857	-8	20	-7
Greater than 6 months to less than 12 months	321	18	339	325	29	354	1	65	5
12 months to less than 4 years	3,251	168	3,419	3,202	158	3,359	-2	-6	-2
4 years or more (excluding Life)	1,640	71	1,711	1,694	72	1,766	3	1	3
Life	132	9	141	144	10	154	9	*	9
<b>Non-criminal prisoners</b>	<b>89</b>	<b>2</b>	<b>91</b>	<b>110</b>	<b>1</b>	<b>111</b>	<b>23</b>	<b>*</b>	<b>22</b>

Young adults are those aged 18 - 20 and those 21 year olds who were aged 20 or under at conviction who have not been reclassified as part of the adult population

\* indicates that one or both of the comparative numbers are less than 10 which could give rise to misleading percentage changes

**Table 2: Population in prison by offence - remand and immediate custodial sentence**

	Aug-03		Aug-04		Percentage change 2003 to 2004	
	Remand	Immediate custodial sentence	Remand	Immediate custodial sentence	Remand	Immediate custodial sentence
<b>All population</b>	<b>13,098</b>	<b>58,737</b>	<b>12,748</b>	<b>61,098</b>	<b>-3</b>	<b>4</b>
Violence against the person	2,634	12,865	2,831	14,166	7	10
Sexual offences	601	5,563	711	5,847	18	5
Robbery	1,217	8,248	1,125	8,508	-8	3
Burglary	1,862	8,772	1,500	8,657	-19	-1
Theft and Handling	1,723	4,549	1,438	4,388	-17	-4
Fraud and Forgery	274	992	330	1,189	21	20
Drugs offence	1,567	10,095	1,580	10,389	1	3
Motoring offences	432	2,660	308	2,405	-29	-10
Other offences	1,709	4,214	1,796	4,767	5	13
Offence not recorded	1,079	779	1,127	782	4	0
<b>All male population</b>	<b>12,079</b>	<b>55,408</b>	<b>11,806</b>	<b>57,622</b>	<b>-2</b>	<b>4</b>
Violence against the person	2,484	12,364	2,711	13,556	9	10
Sexual offences	598	5,538	704	5,816	18	5
Robbery	1,127	7,869	1,054	8,124	-6	3
Burglary	1,765	8,544	1,438	8,404	-19	-2
Theft and Handling	1,488	4,075	1,223	3,950	-18	-3
Fraud and Forgery	229	877	286	1,054	25	20
Drugs offence	1,397	8,810	1,396	9,188	0	4
Motoring offences	421	2,613	301	2,359	-29	-10
Other offences	1,549	3,969	1,640	4,435	6	12
Offence not recorded	1,020	749	1,053	736	3	-2
<b>All female population</b>	<b>1,019</b>	<b>3,329</b>	<b>942</b>	<b>3,476</b>	<b>-8</b>	<b>4</b>
Violence against the person	151	502	121	610	-20	22
Sexual offences	3	24	7	32	*	32
Robbery	90	379	70	384	-22	1
Burglary	97	228	63	253	-35	11
Theft and Handling	235	474	216	438	-8	-8
Fraud and Forgery	45	115	44	135	-2	18
Drugs offence	170	1,285	184	1,201	8	-7
Motoring offences	11	47	7	46	*	-1
Other offences	160	245	156	332	-2	35
Offence not recorded	58	30	74	46	27	50

**Table 2: Population in prison by offence - remand and immediate custodial sentence**

	Aug-03		Aug-04		Percentage change 2003 to 2004	
	Remand	Immediate custodial sentence	Remand	Immediate custodial sentence	Immediate custodial sentence	
					Remand	Immediate custodial sentence
<b>All adult prisoners</b>	<b>10,596</b>	<b>50,472</b>	<b>10,224</b>	<b>52,830</b>	<b>-4</b>	<b>5</b>
Violence against the person	2,095	11,135	2,230	12,229	6	10
Sexual offences	530	5,311	605	5,577	14	5
Robbery	846	6,284	715	6,543	-15	4
Burglary	1,484	7,447	1,155	7,391	-22	-1
Theft and Handling	1,388	3,686	1,162	3,654	-16	-1
Fraud and Forgery	247	954	295	1,152	19	21
Drugs offence	1,385	9,464	1,412	9,704	2	3
Motoring offences	349	2,123	220	1,964	-37	-7
Other offences	1,354	3,471	1,451	3,968	7	14
Offence not recorded	919	598	979	648	6	8
<b>All adult male prisoners</b>	<b>9,736</b>	<b>47,503</b>	<b>9,426</b>	<b>49,732</b>	<b>-3</b>	<b>5</b>
Violence against the person	1,972	10,703	2,132	11,708	8	9
Sexual offences	527	5,287	598	5,546	13	5
Robbery	769	5,979	663	6,235	-14	4
Burglary	1,407	7,251	1,100	7,160	-22	-1
Theft and Handling	1,183	3,263	975	3,253	-18	0
Fraud and Forgery	207	847	254	1,024	23	21
Drugs offence	1,241	8,262	1,258	8,587	1	4
Motoring offences	338	2,080	212	1,920	-37	-8
Other offences	1,227	3,259	1,325	3,685	8	13
Offence not recorded	865	572	909	613	5	7
<b>All adult female prisoners</b>	<b>860</b>	<b>2,969</b>	<b>798</b>	<b>3,098</b>	<b>-7</b>	<b>4</b>
Violence against the person	123	432	98	522	-21	21
Sexual offences	3	24	7	31	*	28
Robbery	77	304	53	308	-32	1
Burglary	77	196	56	230	-28	17
Theft and Handling	205	423	187	401	-8	-5
Fraud and Forgery	41	107	41	128	1	20
Drugs offence	144	1,202	154	1,117	7	-7
Motoring offences	11	43	7	43	*	1
Other offences	126	213	126	282	0	33
Offence not recorded	54	25	70	36	28	40

**Table 2: Population in prison by offence - remand and immediate custodial sentence**

	Aug-03		Aug-04		Percentage change 2003 to 2004	
	Remand	Immediate custodial sentence	Remand	Immediate custodial sentence	Remand	Immediate custodial sentence
<b>All aged 15-17</b>	<b>519</b>	<b>1,737</b>	<b>546</b>	<b>1,777</b>	<b>5</b>	<b>2</b>
Violence against the person	115	309	139	334	20	8
Sexual offences	16	41	36	54	131	32
Robbery	116	418	134	459	15	10
Burglary	91	282	67	274	-26	-3
Theft and Handling	60	282	51	244	-15	-13
Fraud and Forgery	9	4	5	4	*	*
Drugs offence	22	47	34	56	58	20
Motoring offences	6	125	11	94	*	-24
Other offences	70	183	57	238	-19	30
Offence not recorded	14	48	12	20	-16	-58
<b>All males aged 15-17</b>	<b>500</b>	<b>1,690</b>	<b>527</b>	<b>1,724</b>	<b>5</b>	<b>2</b>
Violence against the person	113	299	136	316	20	6
Sexual offences	16	41	36	54	131	32
Robbery	116	406	130	455	12	12
Burglary	88	281	67	269	-24	-4
Theft and Handling	58	271	49	237	-16	-12
Fraud and Forgery	9	1	5	3	*	*
Drugs offence	20	42	30	52	53	22
Motoring offences	6	124	11	93	*	-25
Other offences	61	179	52	227	-15	27
Offence not recorded	14	46	12	17	-16	-63
<b>All females aged 15-17</b>	<b>19</b>	<b>48</b>	<b>19</b>	<b>53</b>	<b>1</b>	<b>12</b>
Violence against the person	2	10	3	18	*	*
Sexual offences	0	0	0	0	*	*
Robbery	0	12	4	4	*	*
Burglary	3	1	0	5	*	*
Theft and Handling	2	11	2	7	*	*
Fraud and Forgery	0	3	0	1	*	*
Drugs offence	2	4	4	4	*	*
Motoring offences	0	1	0	1	*	*
Other offences	10	4	5	11	*	*
Offence not recorded	0	2	0	3	*	*

**Table 2: Population in prison by offence - remand and immediate custodial sentence**

	Aug-03		Aug-04		Percentage change 2003 to 2004	
	Remand	Immediate custodial sentence	Remand	Immediate custodial sentence	Remand	Immediate custodial sentence
<b>All young adults</b>	<b>1,983</b>	<b>6,528</b>	<b>1,978</b>	<b>6,491</b>	<b>0</b>	<b>-1</b>
Violence against the person	424	1,422	463	1,603	9	13
Sexual offences	55	211	70	216	26	3
Robbery	255	1,546	275	1,505	8	-3
Burglary	288	1,043	278	992	-3	-5
Theft and Handling	275	581	225	491	-18	-16
Fraud and Forgery	18	34	30	32	71	-5
Drugs offence	160	585	134	629	-16	8
Motoring offences	78	412	77	347	0	-16
Other offences	286	560	289	562	1	0
Offence not recorded	145	134	136	113	-6	-15
<b>All male young adults</b>	<b>1,843</b>	<b>6,215</b>	<b>1,853</b>	<b>6,166</b>	<b>1</b>	<b>-1</b>
Violence against the person	398	1,362	443	1,533	11	13
Sexual offences	55	211	70	215	26	2
Robbery	242	1,483	262	1,433	8	-3
Burglary	270	1,013	271	975	0	-4
Theft and Handling	248	541	199	460	-20	-15
Fraud and Forgery	14	29	27	27	101	-9
Drugs offence	136	505	108	549	-20	9
Motoring offences	78	410	77	345	0	-16
Other offences	262	531	264	523	1	-2
Offence not recorded	141	131	132	106	-7	-19
<b>All female young adults</b>	<b>140</b>	<b>312</b>	<b>125</b>	<b>325</b>	<b>-11</b>	<b>4</b>
Violence against the person	26	60	20	70	-23	16
Sexual offences	0	0	0	1	*	*
Robbery	13	63	14	72	6	14
Burglary	18	30	7	17	*	-42
Theft and Handling	28	40	26	31	-6	-23
Fraud and Forgery	4	5	3	6	*	*
Drugs offence	24	79	26	80	7	1
Motoring offences	0	3	0	2	*	*
Other offences	24	29	25	39	4	33
Offence not recorded	4	3	4	7	*	*

\* indicates that one or both of the comparative numbers are less than 10 which could give rise to misleading percentage changes

**Table 3: Young population in prison: by type of custody and sex**  
**31 August 2004**

	15	16	17	Total - under 18	18	19	20	21	Total Young Adults
<b>All young population in prisons, of which</b>									
<b><i>Prisoners on remand</i></b>	<b>59</b>	<b>143</b>	<b>344</b>	<b>546</b>	<b>589</b>	<b>642</b>	<b>639</b>	<b>108</b>	<b>1,978</b>
untried	41	99	232	372	366	383	399	69	1,217
convicted unsentenced	19	44	111	174	223	259	240	39	761
<b><i>Prisoners under sentence</i></b>	<b>224</b>	<b>515</b>	<b>1,038</b>	<b>1,777</b>	<b>1,462</b>	<b>1,945</b>	<b>2,417</b>	<b>672</b>	<b>6,495</b>
Fine defaulter	0	0	0	0	0	0	4	0	4
Immediate custodial sentence	224	515	1,038	1,777	1,462	1,945	2,413	672	6,491
<b><i>Non-criminal prisoners</i></b>	<b>0</b>	<b>0</b>	<b>4</b>	<b>4</b>	<b>23</b>	<b>38</b>	<b>36</b>	<b>14</b>	<b>111</b>
<b>All young male population in prisons, of which</b>									
<b><i>Prisoners on remand</i></b>	<b>59</b>	<b>143</b>	<b>325</b>	<b>527</b>	<b>558</b>	<b>591</b>	<b>603</b>	<b>101</b>	<b>1,853</b>
untried	41	99	224	364	345	351	376	65	1,136
convicted unsentenced	19	44	101	164	213	241	226	36	716
<b><i>Prisoners under sentence</i></b>	<b>224</b>	<b>511</b>	<b>989</b>	<b>1,724</b>	<b>1,381</b>	<b>1,854</b>	<b>2,283</b>	<b>653</b>	<b>6,170</b>
Fine defaulter	0	0	0	0	0	0	4	0	4
Immediate custodial sentence	224	511	989	1,724	1,381	1,854	2,279	653	6,166
<b><i>Non-criminal prisoners</i></b>	<b>0</b>	<b>0</b>	<b>3</b>	<b>3</b>	<b>23</b>	<b>38</b>	<b>35</b>	<b>14</b>	<b>110</b>
<b>All young female population in prisons, of which</b>									
<b><i>Prisoners on remand</i></b>	<b>0</b>	<b>0</b>	<b>19</b>	<b>19</b>	<b>31</b>	<b>50</b>	<b>37</b>	<b>7</b>	<b>125</b>
untried	0	0	8	8	22	32	23	4	81
convicted unsentenced	0	0	11	11	10	18	14	3	44
<b><i>Prisoners under sentence</i></b>	<b>0</b>	<b>4</b>	<b>49</b>	<b>53</b>	<b>81</b>	<b>90</b>	<b>134</b>	<b>19</b>	<b>325</b>
Fine defaulter	0	0	0	0	0	0	0	0	0
Immediate custodial sentence	0	4	49	53	81	90	134	19	325
<b><i>Non-criminal prisoners</i></b>	<b>0</b>	<b>0</b>	<b>1</b>	<b>1</b>	<b>0</b>	<b>0</b>	<b>1</b>	<b>0</b>	<b>1</b>

Young adults are those aged 18 - 20 and those 21 year olds who were aged 20 or under at conviction who have not been reclassified as part of the adult population

**Table 4: CNA and population by sex and establishment**

31 August 2004

<b>Establishment</b>	<b>In use CNA</b>	<b>Establish ment Total</b>
<b>Males</b>		
Acklington	882	859
Albany	526	515
Altcourse+	614	980
Ashfield+	300	291
Ashwell	535	531
Aylesbury	356	362
Bedford	325	488
Belmarsh+	792	902
Birmingham	1,100	1,415
Blakenhurst+	641	876
Blantyre House	122	118
Blundestone	420	456
Brinsford+	477	453
Bristol+	420	598
Brixton	606	832
Bullingdon+	759	958
Camp Hill	513	562
Canterbury+	196	305
Cardiff	433	674
Castington+	400	381
Channings Wood	634	660
Chelmsford+	446	570
Coldingley	370	385
Dartmoor	598	599
Deerbolt	513	432
Doncaster+	771	1,127
Dorchester+	143	238
Dovegate	858	856
Dover	316	273
Durham+	442	626
Elmley+	763	979
Erlestoke	426	412
Everthorpe	437	457
Exeter	312	515
Featherstone	599	606
Feltham+	761	662
Ford	541	541
Forest Bank+	800	1,037
Frankland	688	667
Full Sutton	596	606
Garth	633	646
Gartree	399	409
Glen Parva+	668	734
Gloucester	229	308
Grendon/Spring Hill+	577	511
Guys Marsh+	519	548
Haslar	160	130
Haverigg	554	550
Hewell Grange	168	167
Highdown+	646	746
Highpoint	792	803
Hindley+	539	452
Hollesley Bay+	330	269
Holme House+	857	956
Hull+	812	1,074

**Table 4: CNA and population by sex and establishment**

31 August 2004

<b>Establishment</b>	<b>In use CNA</b>	<b>Establishment Total</b>
Huntercombe	360	352
Kingston(Portsmouth)	138	137
Kirkham	588	502
Kirklevington	223	220
Lancaster	147	216
Lancaster Farms+	480	505
Latchmere House	198	197
Leeds	806	1,259
Leicester	206	345
Lewes+	441	515
Leyhill	512	476
Lincoln	307	438
Lindholme+	716	679
Littlehey	664	693
Liverpool	1,186	1,385
Long Lartin	442	424
Lowdham Grange	504	515
Maidstone	548	546
Manchester	954	1,222
Moorland Open+	260	244
Moorland+	740	758
North Sea Camp	307	274
Northallerton	153	224
Norwich+	568	748
Nottingham	385	496
Onley+	580	515
Parc+	788	992
Parkhurst+	459	425
Pentonville	889	1,220
Portland+	447	433
Preston	331	632
Ranby	760	848
Reading+	196	258
Risley	1,038	1,055
Rochester	392	352
Rye Hill	600	657
Shepton Mallet	163	185
Shrewsbury	182	317
Stafford	680	673
Standford Hill	464	442
Stocken	595	614
Stoke Heath+	574	633
Sudbury	551	539
Swaleside	755	770
Swansea	205	338
Swinfen Hall	431	431
The Mount	704	746
The Verne	552	587
The Weare	396	348
The Wolds	310	355
Thorn Cross+	316	270
Usk/Prescoed+	310	400
Wakefield	561	550
Wandsworth	994	1,480
Warren Hill+	222	212
Wayland	657	692
Wealstun+	762	681

## Table 4: CNA and population by sex and establishment

31 August 2004

<b>Establishment</b>	<b>In use CNA</b>	<b>Establishment Total</b>
Wellingborough	516	517
Werrington	146	140
Wetherby+	300	300
Whatton	341	357
Whitemoor	456	419
Winchester+	437	649
Woodhill+	650	784
Wormwood Scrubs	1,167	1,266
Wymott	1,029	1,038
<b>TOTAL</b>	<b>63,053</b>	<b>70,597</b>
Police Cells	0	0
<b>TOTAL</b>	<b>0</b>	<b>0</b>
<b>Males</b>		
<b>TOTAL in Custody</b>	<b>63,053</b>	<b>70,597</b>
<b>Females</b>		
Askham Grange	151	121
Brockhill+	164	144
Bronzefield	350	294
Buckley Hall	290	315
Bullwood Hall+	180	150
Cookham Wood+	120	128
Downview+	230	214
Drake Hall+	315	270
Durham+	110	78
East Sutton Park+	94	98
Eastwood Park+	310	275
Edmunds Hill+	308	145
Foston Hall	228	220
Holloway+	522	367
Low Newton+	343	306
Morton Hall	391	366
New Hall+	367	350
Send	217	209
Styal+	406	410
<b>TOTAL</b>	<b>5,096</b>	<b>4,460</b>
Police Cells	0	0
<b>TOTAL</b>	<b>0</b>	<b>0</b>
<b>TOTAL in Custody</b>	<b>5,096</b>	<b>4,460</b>
<b>Males and Females</b>	<b>68,149</b>	<b>75,057</b>

In Use CNA - Certified Normal Accommodation that is available for immediate use, excludes damaged cells, cells affected by building works and cells taken out of use due to staff shortages

+ Establishments with more than one unit