

Population in Custody MONTHLY TABLES

April 2005
England and Wales

POPULATION IN CUSTODY APRIL 2005 - KEY POINTS

RDS NOMS

Population in custody

- The population in custody on 30 April 2005 was 75,344, 1 per cent less than a year earlier. The population in prisons was 74,891, in Secure Training Centres (STCs) it was 228, and in Local Authority Secure Children's Homes (LASCHs) it was 225.
- The male prison population remained at about the same level as a year ago at 70,466 while the female population decreased by 5 per cent to 4,425.

Population in prison

- The remand population in prison fell by 3 per cent to 12,235 in April 2005 compared to April 2004. Within this total, untried prisoner numbers decreased by 2 per cent to 7,624 while the convicted unsentenced population decreased by 6 per cent to 4,611.
- Amongst the remand prison population the largest decreases compared to April 2004 were for robbery, burglary and theft and handling, down 17, 16 and 11 per cent respectively. Fraud and forgery recorded the largest proportionate increase of 31 per cent.
- There were 61,656 sentenced prisoners at 30 April 2005, 0.1 per cent more than a year earlier. Longer length sentence bands saw increases, whilst those sentenced to short term sentences saw decreases. The largest proportionate increase since April 2004 was for those sentenced to life (5 per cent), whilst the largest proportionate decrease was for those sentenced to less than or equal to six months (down 12 per cent).
- Amongst the sentenced prison population fraud and forgery showed the largest increases of 17 per cent, followed by violence against the person, and sexual offences which both increased by 7 per cent. Motoring offences and theft and handling fell by 16 per cent and 14 per cent respectively compared to April 2004. Females sentenced for theft and handling and robbery fell by 20 and 12 per cent respectively.
- The young adult population in prisons was 8,247 at 30 April 2005, 5 per cent less than 12 months before, the population of 15-17 year olds also decreased by 5 per cent.
- The prison population was 109 per cent of the 'In Use CNA' (68,704) at 30 April 2005.

Population in custody statistics are available via the direct link to offender management caseload statistics at: <http://www.homeoffice.gov.uk/rds/omcs.html>

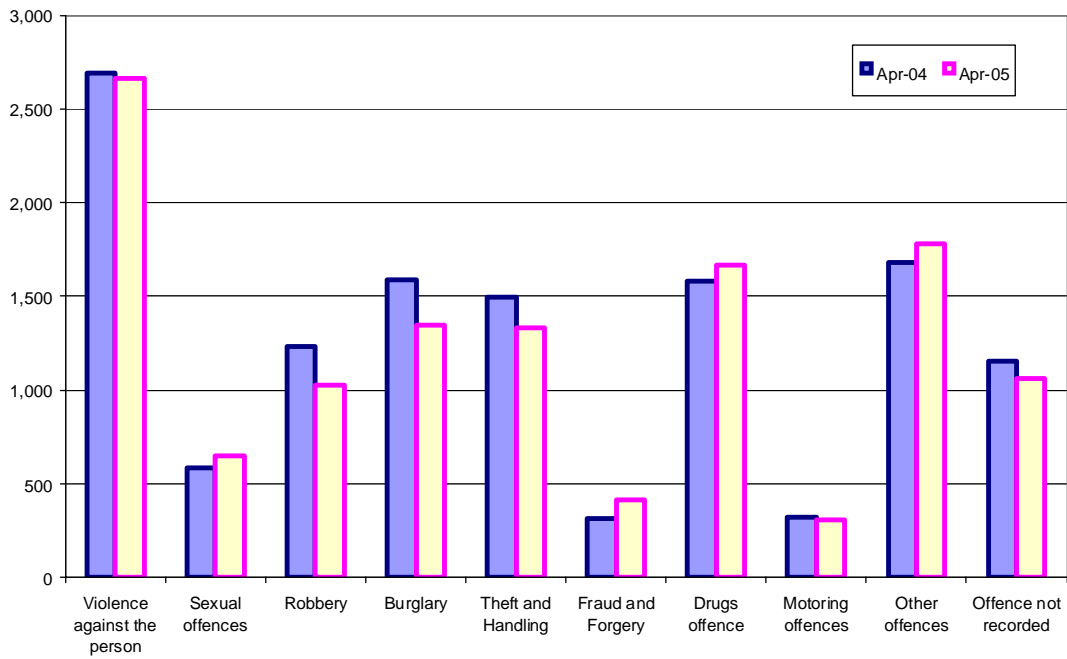
Other RDS NOMS publications available on the Home Office website:
Sentencing statistics quarterly brief: <http://www.homeoffice.gov.uk/rds/spnd.html>

For further queries:

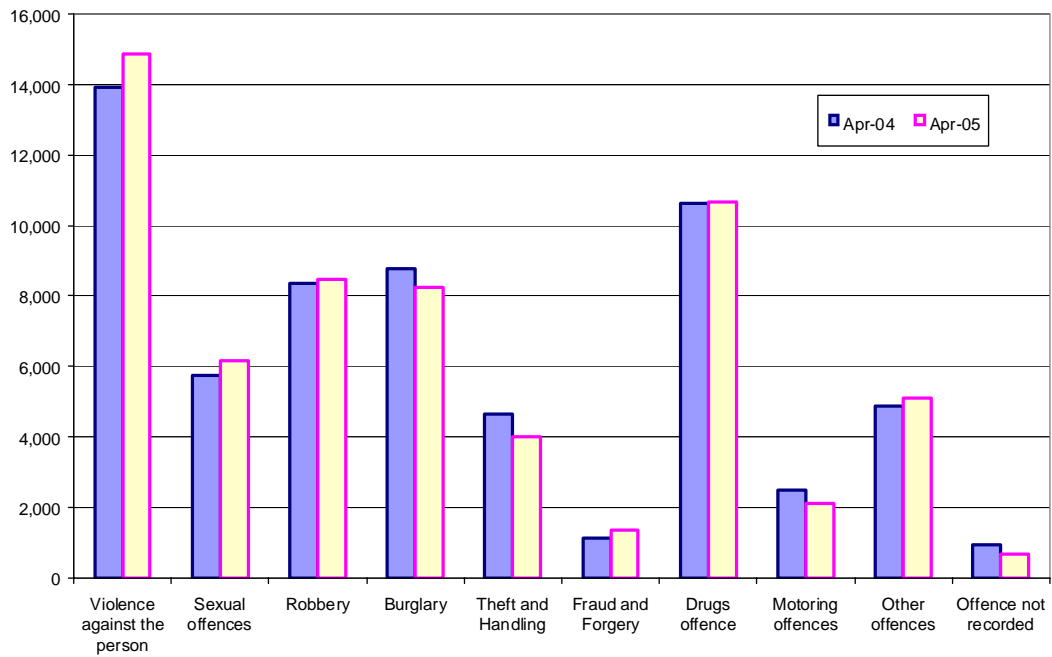
E-mail: rdsnomsstatistics@homeoffice.gsi.gov.uk

Press enquiries - Press Office 020 7035 4381

Remand population by offence group



Immediate custodial sentenced population by offence group



NOTES

Data sources

Prison establishments routinely provide records of the numbers of persons held in custody at the end of each month, broadly subdivided according to age, sex, custody type and sentence length. The records are collated and processed centrally, to produce the main estimates of end-month population presented in tables 1 and 4 of this output. Establishments also record electronically details for individual inmates such as date of birth, sex, religion, ethnic origin, custody type, offence, and reception and discharge dates and, for sentenced prisoners, sentence length. These data are collected on a central computer database and are used to produce the analyses by offence group and individual year of age. They form the basis of detailed population breakdowns, supplementing the aggregates derived from establishments' monthly population returns to which they are scaled for consistency. A new more detailed method of scaling this information was developed in 2004. Individual components may not sum to the totals which are calculated and rounded independently.

The information given here remains subject to inaccuracies inherent in any large-scale centralised recording system. While the figures shown have been checked as far as practicable, they must be approximate and not necessarily accurate to the last digit shown. All figures are provisional pending publication of the annual Offender Management Caseload statistical publication.

Information on the population in STCs and LASCHs has been supplied by the Youth Justice Board.

Definitions

Population in custody - this includes those held in prison establishments, police cells under Operation Safeguard, secure training centres (STCs) and Local Authority secure children's homes (LASCHs). This is a change to previous outputs (notably Prison Population Monthly Brief and Prison Statistics England and Wales) where the reference to 'population in custody' just covered those held in prison establishments and police cells. All coverage is for England and Wales.

Population in prison – this includes those held in prisons in England and Wales, including the three removal centres of Dover, Haslar and Lindholme.

Sentenced population – this includes those sentenced to an immediate custodial sentence and fine defaulters.

Immediate custodial sentence – this does not include fine defaulters.

Adult prisoners – these are prisoners aged 21 years and over.

Young adults – these are prisoners aged 18 to 20, but including 21 year old prisoners who were aged 20 or under at conviction who have not been reclassified as part of the adult population

Table 1: Population in custody: by type of custody and sex

	Apr-04			Apr-05			Percentage change 2004 to 2005		
	Males	Females	Total	Males	Females	Total	Males	Females	Total
All population in <u>custody</u>, of which	71,017	4,760	75,777	70,803	4,541	75,344	0	-5	-1
Prisons	70,674	4,643	75,317	70,466	4,425	74,891	0	-5	-1
Police cells	0	0	0	0	0	0	*	*	*
LASCHs	224	54	278	185	40	225	-17	-26	-19
STCs	119	63	182	152	76	228	28	21	25
All population in <u>prison</u>, of which	70,674	4,643	75,317	70,466	4,425	74,891	0	-5	-1
Remand	11,665	981	12,646	11,297	938	12,235	-3	-4	-3
untried	7,193	549	7,742	7,066	558	7,624	-2	2	-2
convicted unsentenced	4,472	432	4,904	4,231	380	4,611	-5	-12	-6
Under sentence	57,999	3,612	61,611	58,216	3,440	61,656	0	-5	0
Fine defaulter	47	4	51	65	5	70	38	*	37
Less than or equal to 6 months	5,650	551	6,201	5,009	452	5,461	-11	-18	-12
Greater than 6 months to less than 12 months	2,203	219	2,422	2,080	191	2,271	-6	-13	-6
12 months to less than 4 years	20,204	1,351	21,555	20,329	1,302	21,631	1	-4	0
4 years or more (excluding Life)	24,517	1,310	25,827	25,100	1,309	26,409	2	0	2
Life	5,378	177	5,555	5,633	181	5,814	5	2	5
Non-criminal prisoners	1,010	50	1,060	953	47	1,000	-6	-6	-6
All adult population in <u>prison</u>, of which	60,179	4,125	64,304	60,467	3,949	64,416	0	-4	0
Remand	9,330	858	10,188	9,118	804	9,922	-2	-6	-3
untried	5,791	485	6,276	5,755	478	6,233	-1	-1	-1
convicted unsentenced	3,539	373	3,912	3,363	326	3,689	-5	-13	-6
Under sentence	49,942	3,219	53,161	50,488	3,104	53,592	1	-4	1
Fine defaulter	42	4	46	59	5	64	40	*	39
Less than or equal to 6 months	4,359	472	4,831	3,867	382	4,249	-11	-19	-12
Greater than 6 months to less than 12 months	1,576	177	1,754	1,500	167	1,667	-5	-6	-5
12 months to less than 4 years	16,038	1,161	17,199	16,259	1,130	17,389	1	-3	1
4 years or more (excluding Life)	22,701	1,238	23,939	23,348	1,247	24,595	3	1	3
Life	5,226	167	5,393	5,455	173	5,628	4	4	4
Non-criminal prisoners	907	48	955	861	41	902	-5	-15	-6
All 15 -17 year olds in <u>prison</u>, of which	2,275	73	2,347	2,165	63	2,228	-5	-14	-5
Remand	499	19	518	443	16	459	-11	-16	-11
untried	338	11	349	290	12	302	-14	9	-13
convicted unsentenced	161	8	169	153	5	158	-5	*	-7
Under sentence	1,773	53	1,826	1,721	46	1,767	-3	-13	-3
Fine defaulter	0	0	0	0	0	0	*	*	*
Less than or equal to 6 months	462	16	478	437	19	456	-5	19	-5
Greater than 6 months to less than 12 months	238	13	251	238	4	242	0	*	-4
12 months to less than 4 years	930	19	949	886	22	908	-5	16	-4
4 years or more (excluding Life)	129	5	134	143	1	144	11	*	7
Life	14	0	14	17	0	17	21	*	21
Non-criminal prisoners	2	1	3	1	1	2	*	*	*
All young adults in <u>prison</u>, of which	8,221	445	8,666	7,834	413	8,247	-5	-7	-5
Remand	1,836	104	1,940	1,736	118	1,854	-5	13	-4
untried	1,064	53	1,117	1,021	68	1,089	-4	28	-3
convicted unsentenced	773	51	823	715	49	764	-8	-4	-7
Under sentence	6,284	340	6,624	6,007	290	6,297	-4	-15	-5
Fine defaulter	5	0	5	6	0	6	*	*	*
Less than or equal to 6 months	829	64	893	705	51	757	-15	-20	-15
Greater than 6 months to less than 12 months	389	28	417	342	20	362	-12	-29	-13
12 months to less than 4 years	3,236	171	3,407	3,184	150	3,334	-2	-12	-2
4 years or more (excluding Life)	1,687	67	1,754	1,609	61	1,670	-5	-9	-5
Life	138	10	148	161	8	169	17	*	14
Non-criminal prisoners	101	1	102	91	5	96	-10	*	-6

Young adults are those aged 18 - 20 and those 21 year olds who were aged 20 or under at conviction who have not been reclassified as part of the adult population

* indicates that one or both of the comparative numbers are less than 10 which could give rise to misleading percentage changes

Table 2: Population in prison by offence - remand and immediate custodial sentence

	Apr-04		Apr-05		Percentage change 2004 to 2005	
	Remand	Immediate custodial sentence	Remand	Immediate custodial sentence	Remand	Immediate custodial sentence
All population	12,646	61,560	12,235	61,586	-3	0
Violence against the person	2,689	13,911	2,661	14,860	-1	7
Sexual offences	585	5,754	647	6,147	11	7
Robbery	1,234	8,373	1,023	8,457	-17	1
Burglary	1,590	8,767	1,343	8,236	-16	-6
Theft and Handling	1,497	4,663	1,333	3,999	-11	-14
Fraud and Forgery	316	1,146	414	1,336	31	17
Drugs offence	1,578	10,615	1,669	10,666	6	0
Motoring offences	322	2,504	309	2,111	-4	-16
Other offences	1,683	4,886	1,778	5,083	6	4
Offence not recorded	1,154	941	1,059	691	-8	-27
All male population	11,665	57,952	11,297	58,151	-3	0
Violence against the person	2,546	13,320	2,512	14,227	-1	7
Sexual offences	577	5,731	644	6,112	12	7
Robbery	1,152	7,981	961	8,111	-17	2
Burglary	1,504	8,523	1,287	8,007	-14	-6
Theft and Handling	1,286	4,176	1,153	3,611	-10	-14
Fraud and Forgery	281	1,012	364	1,190	30	18
Drugs offence	1,375	9,310	1,465	9,415	7	1
Motoring offences	317	2,452	307	2,067	-3	-16
Other offences	1,541	4,555	1,629	4,756	6	4
Offence not recorded	1,087	894	975	656	-10	-27
All female population	981	3,608	938	3,435	-4	-5
Violence against the person	142	591	148	633	4	7
Sexual offences	8	23	3	35	*	52
Robbery	82	392	62	346	-24	-12
Burglary	86	244	56	229	-35	-6
Theft and Handling	211	488	180	388	-15	-20
Fraud and Forgery	35	134	50	146	43	9
Drugs offence	203	1,306	204	1,251	0	-4
Motoring offences	5	52	2	45	*	-13
Other offences	142	332	149	326	5	-2
Offence not recorded	66	47	84	35	27	-26

Table 2: Population in prison by offence - remand and immediate custodial sentence

	Apr-04		Apr-05		Percentage change 2004 to 2005	
	Remand	Immediate custodial sentence	Remand	Immediate custodial sentence	Remand	Immediate custodial sentence
All adult prisoners	10,188	53,115	9,922	53,528	-3	1
Violence against the person	2,120	11,961	2,085	12,823	-2	7
Sexual offences	517	5,474	558	5,883	8	7
Robbery	752	6,445	632	6,504	-16	1
Burglary	1,249	7,501	1,056	7,127	-15	-5
Theft and Handling	1,220	3,832	1,106	3,323	-9	-13
Fraud and Forgery	290	1,100	391	1,290	35	17
Drugs offence	1,435	9,926	1,491	9,990	4	1
Motoring offences	247	2,039	232	1,743	-6	-15
Other offences	1,367	4,058	1,430	4,259	5	5
Offence not recorded	990	779	939	587	-5	-25
All adult male prisoners	9,330	49,900	9,118	50,429	-2	1
Violence against the person	2,005	11,465	1,967	12,287	-2	7
Sexual offences	509	5,451	557	5,849	9	7
Robbery	683	6,123	584	6,222	-14	2
Burglary	1,172	7,279	1,012	6,917	-14	-5
Theft and Handling	1,035	3,392	949	2,974	-8	-12
Fraud and Forgery	257	976	345	1,148	34	18
Drugs offence	1,249	8,715	1,315	8,810	5	1
Motoring offences	242	1,991	230	1,699	-5	-15
Other offences	1,246	3,774	1,302	3,969	4	5
Offence not recorded	931	734	858	555	-8	-24
All adult female prisoners	858	3,215	804	3,099	-6	-4
Violence against the person	115	497	118	536	3	8
Sexual offences	8	23	2	34	*	48
Robbery	69	322	49	282	-29	-12
Burglary	77	222	44	210	-43	-5
Theft and Handling	185	441	157	350	-15	-21
Fraud and Forgery	33	124	46	142	39	15
Drugs offence	186	1,211	176	1,180	-5	-3
Motoring offences	5	48	2	44	*	-8
Other offences	121	284	128	290	6	2
Offence not recorded	59	44	81	31	37	-30

Table 2: Population in prison by offence - remand and immediate custodial sentence

	Apr-04		Apr-05		Percentage change 2004 to 2005	
	Remand	Immediate custodial sentence	Remand	Immediate custodial sentence	Remand	Immediate custodial sentence
All aged 15-17	518	1,826	459	1,767	-11	-3
Violence against the person	123	352	118	384	-4	9
Sexual offences	18	55	24	62	33	13
Robbery	150	454	108	450	-28	-1
Burglary	58	265	59	259	2	-2
Theft and Handling	60	296	36	231	-40	-22
Fraud and Forgery	4	3	4	3	*	*
Drugs offence	18	58	32	69	78	19
Motoring offences	10	103	9	74	*	-28
Other offences	51	210	56	224	10	7
Offence not recorded	23	30	14	10	-39	*
All males aged 15-17	499	1,773	443	1,721	-11	-3
Violence against the person	119	334	113	362	-5	8
Sexual offences	18	55	24	62	33	13
Robbery	147	449	104	443	-29	-1
Burglary	57	260	59	257	4	-1
Theft and Handling	55	288	35	227	-36	-21
Fraud and Forgery	3	2	4	2	*	*
Drugs offence	15	54	29	66	93	22
Motoring offences	10	101	9	74	*	-27
Other offences	50	201	53	217	6	8
Offence not recorded	22	29	14	10	-36	-66
All females aged 15-17	19	53	16	46	-16	-13
Violence against the person	4	18	5	22	*	22
Sexual offences	0	0	0	0	*	*
Robbery	3	5	4	7	*	*
Burglary	1	5	0	2	*	*
Theft and Handling	5	8	1	4	*	*
Fraud and Forgery	1	1	0	1	*	*
Drugs offence	3	4	3	3	*	*
Motoring offences	0	2	0	0	*	*
Other offences	1	9	3	7	*	*
Offence not recorded	1	1	0	0	*	*

Table 2: Population in prison by offence - remand and immediate custodial sentence

	Apr-04		Apr-05		Percentage change 2004 to 2005	
	Remand	Immediate custodial sentence	Remand	Immediate custodial sentence	Remand	Immediate custodial sentence
All young adults	1,940	6,619	1,854	6,291	-4	-5
Violence against the person	445	1,598	458	1,652	3	3
Sexual offences	49	225	64	202	31	-10
Robbery	332	1,474	282	1,503	-15	2
Burglary	282	1,001	228	850	-19	-15
Theft and Handling	216	535	190	445	-12	-17
Fraud and Forgery	22	43	19	43	-14	0
Drugs offence	124	632	146	607	18	-4
Motoring offences	65	361	68	295	5	-18
Other offences	265	618	291	600	10	-3
Offence not recorded	140	132	107	94	-24	-29
All male young adults	1,836	6,279	1,736	6,001	-5	-4
Violence against the person	422	1,522	433	1,578	3	4
Sexual offences	49	225	63	201	29	-11
Robbery	322	1,409	273	1,446	-15	3
Burglary	274	984	216	833	-21	-15
Theft and Handling	196	496	169	410	-14	-17
Fraud and Forgery	21	34	15	40	-29	18
Drugs offence	110	540	122	539	11	0
Motoring offences	65	359	68	294	5	-18
Other offences	245	579	274	571	12	-1
Offence not recorded	134	130	103	90	-23	-31
All female young adults	104	340	118	290	13	-15
Violence against the person	23	76	25	75	9	-1
Sexual offences	0	0	1	1	*	*
Robbery	10	65	9	57	*	-12
Burglary	8	17	12	17	*	0
Theft and Handling	20	39	22	35	10	-10
Fraud and Forgery	1	9	4	3	*	*
Drugs offence	14	91	24	68	71	-25
Motoring offences	0	2	0	1	*	*
Other offences	20	39	18	29	-10	-26
Offence not recorded	6	2	3	4	*	*

* indicates that one or both of the comparative numbers are less than 10 which could give rise to misleading percentage changes

Table 3: Young population in prison: by type of custody and sex

30 April 2005

	15	16	17	Total - under 18	18	19	20	21	Total Young Adults
All young population in prisons, of which									
<i>Prisoners on remand</i>	44	127	289	459	595	593	584	81	1,854
untried	31	82	188	302	344	337	344	65	1,089
convicted unsentenced	13	45	101	158	252	256	240	16	764
<i>Prisoners under sentence</i>	186	568	1,013	1,767	1,419	1,999	2,286	593	6,297
Fine defaulter	0	0	0	0	1	2	2	0	6
Immediate custodial sentence	186	568	1,013	1,767	1,418	1,996	2,284	593	6,291
<i>Non-criminal prisoners</i>	0	1	1	2	18	28	29	21	96
All young male population in prisons, of which									
<i>Prisoners on remand</i>	44	127	273	443	560	553	544	78	1,736
untried	31	82	177	290	320	315	322	64	1,021
convicted unsentenced	13	45	96	153	240	239	222	15	715
<i>Prisoners under sentence</i>	186	568	967	1,721	1,353	1,904	2,177	574	6,007
Fine defaulter	0	0	0	0	1	2	2	0	6
Immediate custodial sentence	186	568	967	1,721	1,352	1,902	2,174	574	6,001
<i>Non-criminal prisoners</i>	0	1	0	1	17	27	26	21	91
All young female population in prisons, of which									
<i>Prisoners on remand</i>	0	0	16	16	35	40	40	3	118
untried	0	0	12	12	23	22	22	1	68
convicted unsentenced	0	0	5	5	12	18	18	2	49
<i>Prisoners under sentence</i>	0	0	46	46	67	95	110	19	290
Fine defaulter	0	0	0	0	0	0	0	0	0
Immediate custodial sentence	0	0	46	46	67	95	110	19	290
<i>Non-criminal prisoners</i>	0	0	1	1	1	1	3	0	5

Young adults are those aged 18 - 20 and those 21 year olds who were aged 20 or under at conviction who have not been reclassified as part of the adult population

Table 4: CNA and population by sex and establishment

30 April 2005

Establishment	In use CNA	Establish ment Total
Males		
Acklington	882	869
Albany	526	522
Altcourse+	614	885
Ashfield+	300	274
Ashwell	535	543
Aylesbury	384	376
Bedford	324	470
Belmarsh+	799	893
Birmingham	1,121	1,404
Blakenhurst+	821	1,040
Blantyre House	122	114
Blundestone	420	462
Brinsford+	477	461
Bristol+	426	596
Brixton	606	784
Bullingdon+	759	953
Camp Hill	513	585
Canterbury+	196	290
Cardiff	525	735
Castington+	400	374
Channings Wood	634	657
Chelmsford+	437	568
Coldingley	370	387
Dartmoor	598	616
Deerbolt	513	418
Doncaster+	771	1,006
Dorchester+	143	235
Dovegate	800	790
Dover	314	275
Durham+	374	628
Edmunds Hill	160	154
Elmley+	753	972
Erlestoke	426	421
Everthorpe	437	459
Exeter	316	503
Featherstone	599	602
Feltham+	761	576
Ford	541	521
Forest Bank+	800	1,021
Frankland	718	719
Full Sutton	596	595
Garth	633	652
Gartree	399	418
Glen Parva+	668	726
Gloucester	214	282
Grendon/Spring Hill+	555	513
Guys Marsh+	519	560
Haslar	160	108
Haverigg	536	545
Hewell Grange	175	169
Highdown+	627	728

Table 4: CNA and population by sex and establishment

30 April 2005

Establishment	In use CNA	Establish ment Total
Highpoint	776	788
Hindley+	455	401
Hollesley Bay+	330	263
Holme House+	857	985
Hull+	812	1,045
Huntercombe	360	345
Kingston(Portsmouth)	138	138
Kirkham	588	506
Kirklevington	223	220
Lancaster	159	238
Lancaster Farms+	480	500
Latchmere House	207	206
Leeds	806	1,216
Leicester	191	341
Lewes+	458	535
Leyhill	508	496
Lincoln	307	454
Lindholme+	802	773
Littlehey	664	695
Liverpool	1,168	1,363
Long Lartin	444	430
Lowdham Grange	504	501
Maidstone	548	541
Manchester	954	1,234
Moorland Open+	260	215
Moorland+	740	709
North Sea Camp	306	290
Northallerton	127	170
Norwich+	591	774
Nottingham	385	505
Onley+	520	506
Parc+	839	959
Parkhurst+	459	500
Pentonville	868	1,165
Peterborough+	140	162
Portland+	447	396
Preston	331	592
Ranby	912	988
Reading+	186	266
Risley	1,038	1,046
Rochester	392	384
Rye Hill	600	589
Shepton Mallet	160	184
Shrewsbury	168	258
Stafford	680	677
Standford Hill	464	451
Stocken	595	606
Stoke Heath+	574	610
Sudbury	563	539
Swaleside	756	771
Swansea	248	402
Swinfen Hall+	520	464
The Mount	704	686

Table 4: CNA and population by sex and establishment

30 April 2005

Establishment	In use CNA	Establishment Total	
The Verne	552	586	
The Weare	400	368	
The Wolds	330	297	
Thorn Cross+	316	248	
Usk/Prescoed+	310	414	
Wakefield	561	554	
Wandsworth	995	1,400	
Warren Hill+	222	198	
Wayland	657	703	
Wealstun+	842	761	
Wellingborough	516	523	
Werrington	146	129	
Wetherby+	350	336	
Whatton	319	354	
Whitemoor	450	429	
Winchester+	436	642	
Woodhill+	650	748	
Wormwood Scrubs	1,167	1,216	
Wymott	1,021	1,028	
TOTAL	63,849	70,466	
Police Cells	0	0	
TOTAL	0	0	
Males	TOTAL in Custody	63,849	70,466
Females			
Askham Grange	151	85	
Brockhill+	145	116	
Bronzefield+	451	409	
Buckley Hall	350	332	
Bullwood Hall+	167	148	
Cookham Wood+	120	161	
Downview+	251	243	
Drake Hall+	315	274	
Durham+	0	7	
East Sutton Park+	94	98	
Eastwood Park+	310	301	
Foston Hall	223	220	
Holloway+	479	443	
Low Newton+	343	256	
Morton Hall	391	321	
New Hall+	367	359	
Peterborough+	75	62	
Send	218	213	
Styal+	405	377	
TOTAL	4,855	4,425	
Police Cells	0	0	
TOTAL	0	0	
TOTAL in Custody	4,855	4,425	
Males and Females	68,704	74,891	

In Use CNA - Certified Normal Accommodation that is available for immediate use, excludes damaged cells, cells affected by building works and cells taken out of use due to staff shortages

+ Establishments with more than one unit