

## Appendix A: Tables and charts for the case study areas

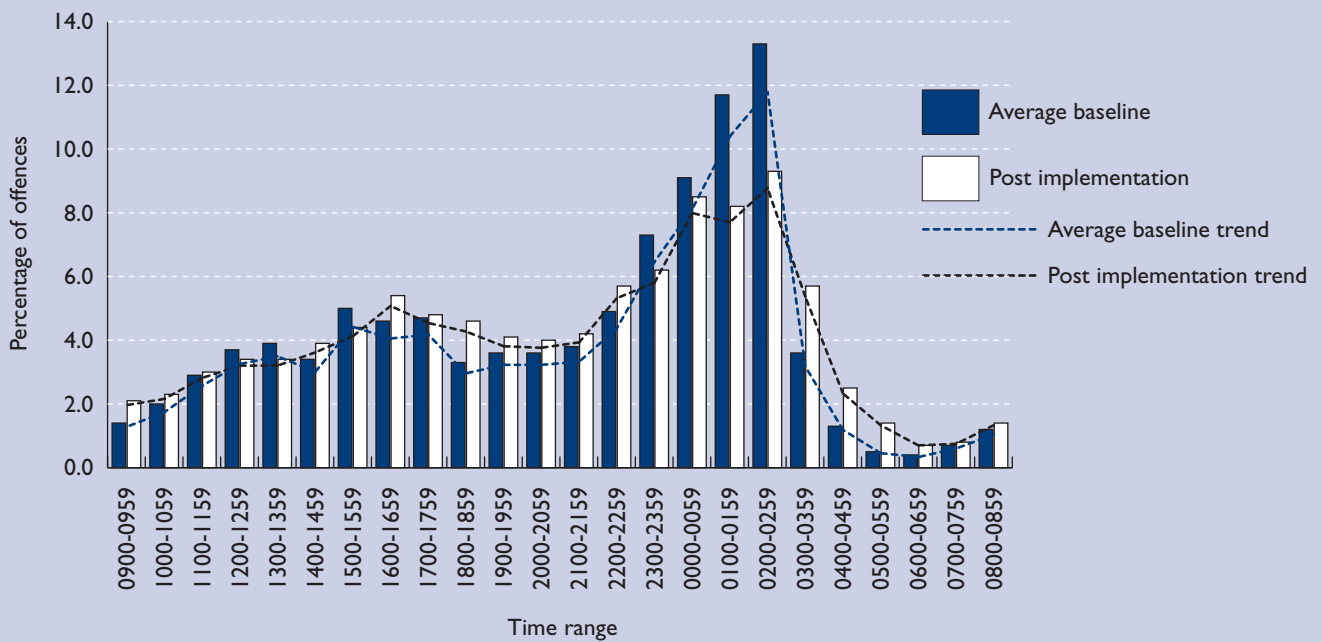
### Recorded violence against the person offences

**Table 1: Violence against the person annual offences counts by entire case study area (all time periods, weekday and weekend offences)**

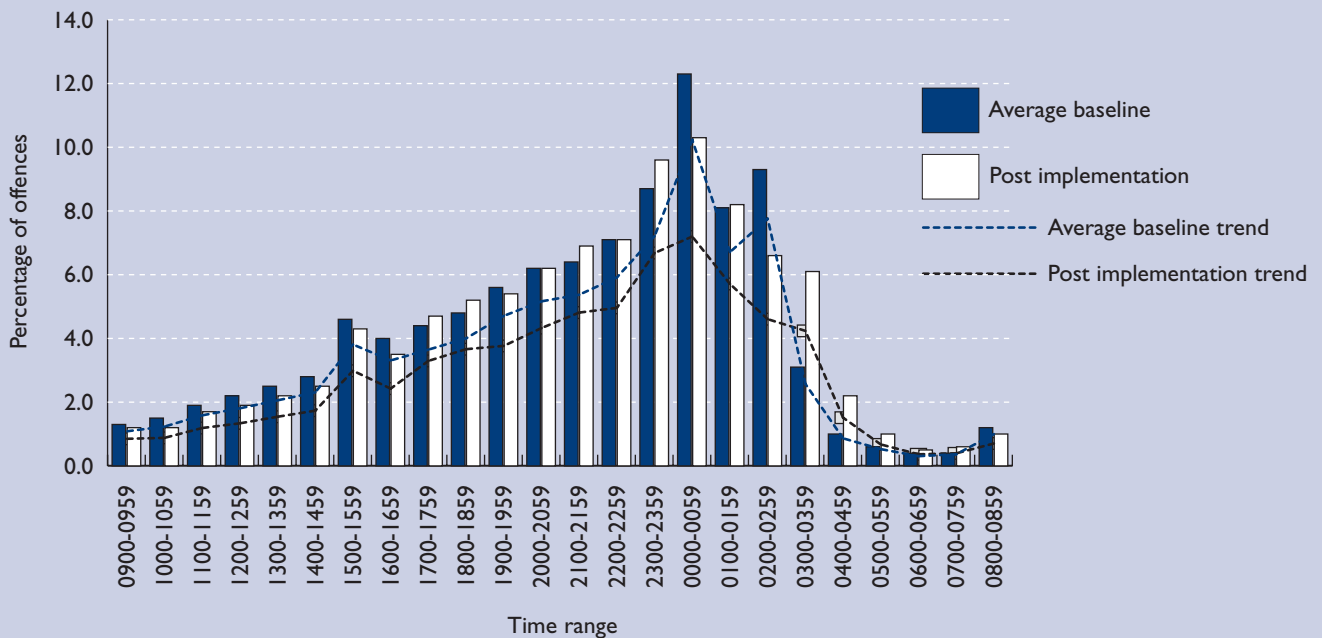
Birmingham			
	Average baseline	Post implementation	% Change
Weekend	1,590 (43.6%)	1,739 (44.7%)	9.4
Weekday	2,049	2,145	4.7
All	3,639	3,884	6.7
Blackpool			
	Average baseline	Post implementation	% Change
Weekend	3,070 (54.4%)	2,868 (56.2%)	-6.6
Weekday	2,567	2,230	-13.1
All	5,637	5,098	-9.6
Croydon			
	Average baseline	Post implementation	% Change
Weekend	3,145 (46.7%)	2,637 (45.3%)	-16.2
Weekday	3,578	3,184	-11.0
All	6,723	5,821	-13.4
Guildford			
	Average baseline	Post implementation	% Change
Weekend	932 (53.6%)	1,033 (53.3%)	10.8
Weekday	804	903	12.3
All	1,736	1,936	11.5
Nottingham			
	Average baseline	Post implementation	% Change
Weekend	4,571 (50.7%)	4,872 (52.6%)	6.6
Weekday	4,435	4,382	-1.2
All	9,006	9,254	2.8
All five areas (pooled)			
	Average baseline	Post implementation	% Change
Weekend	13,308 (49.7%)	13,149 (50.5%)	-1.2
Weekday	13,433	12,844	-4.4
All	26,741	25,993	-2.8

Notes: Figure in brackets is the percentage of all offences occurring at weekends.

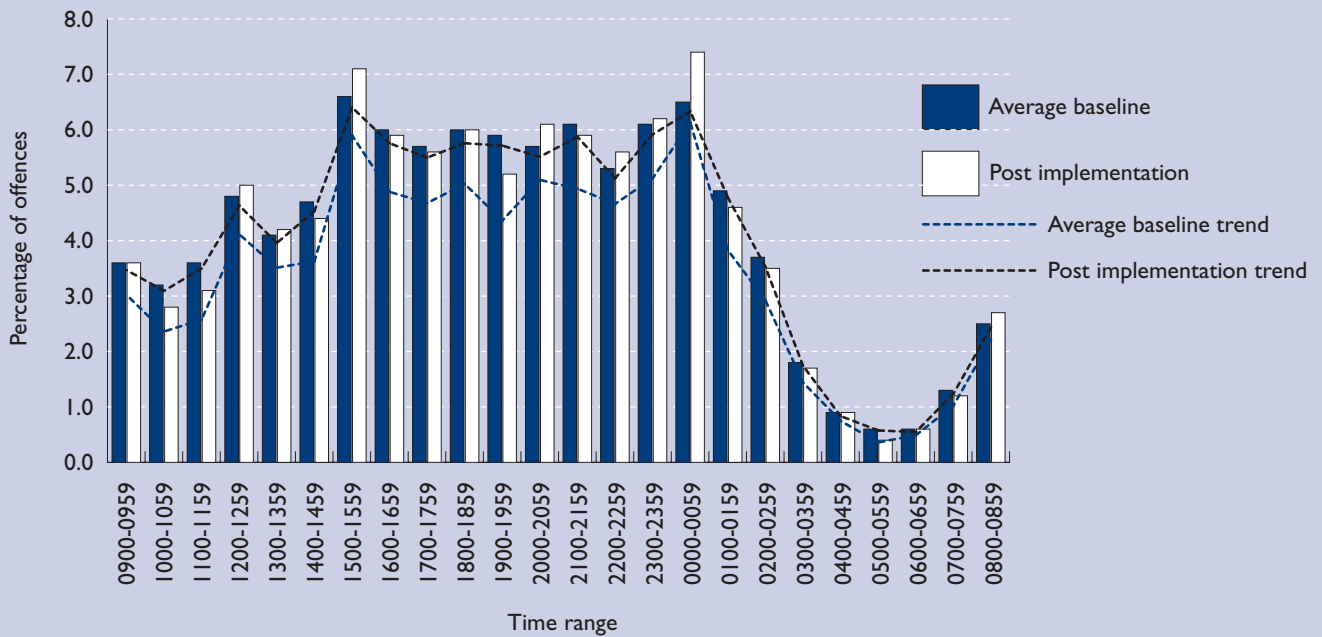
**Chart 1: Proportional changes to violence against the person offences by time of day in Birmingham City Centre (average baseline and post implementation periods)**



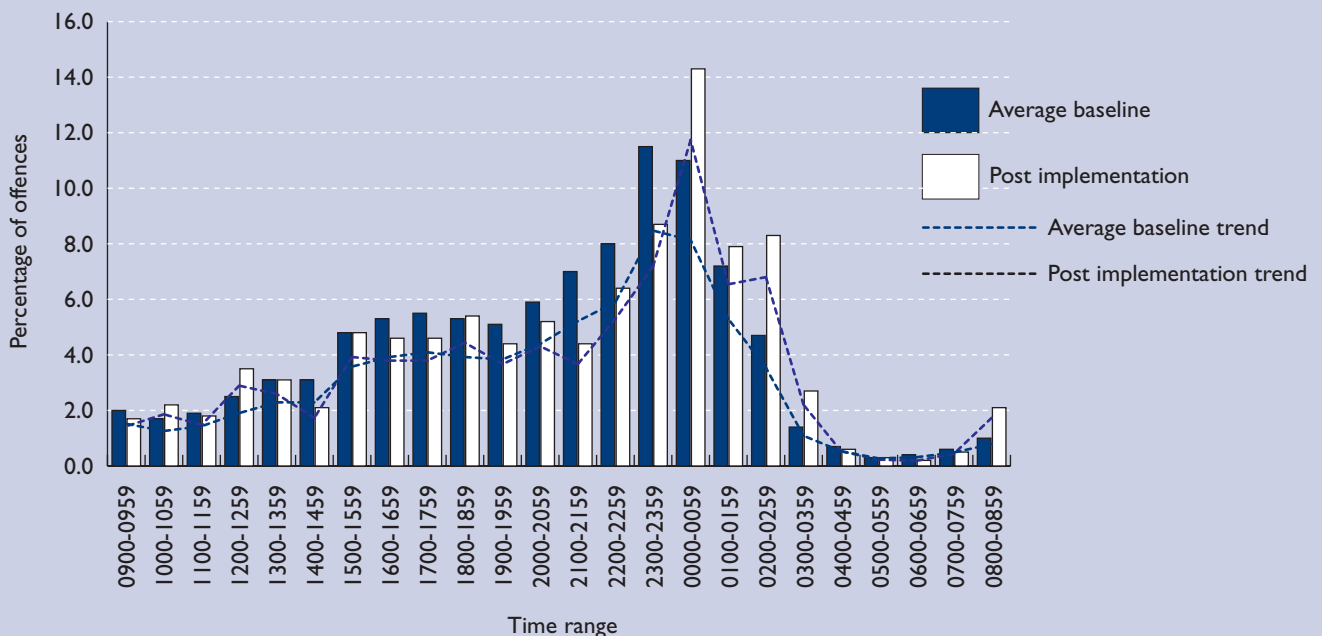
**Chart 2: Proportional changes to violence against the person offences by time of day in Blackpool (average baseline and post implementation periods)**



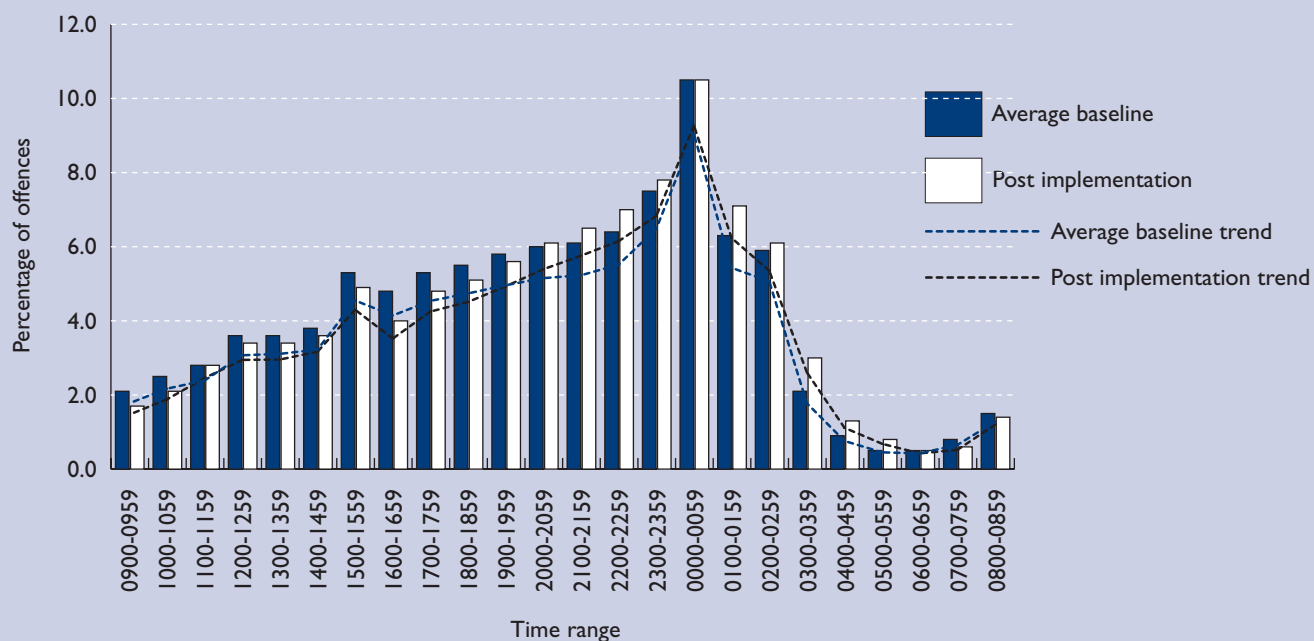
**Chart 3: Proportional changes to violence against the person offences by time of day in Croydon (average baseline and post implementation periods)**



**Chart 4: Proportional changes to violence against the person offences by time of day in Guildford (average baseline and post implementation periods)**



**Chart 5: Proportional changes to violence against the person offences by time of day in Nottingham (average baseline and post implementation periods)**



## Recorded criminal damage offences

**Table 2: Criminal damage annual offences counts by entire case study area (all time periods, weekday and weekend offences)**

Birmingham			
	Average baseline	Post implementation	% Change
Weekend	596 (52.0%)	592 (50.7%)	-0.7
Weekday	549	575	4.7
All	1,145	1,167	1.9
Blackpool			
	Average baseline	Post implementation	% Change
Weekend	3,074 (52.4%)	2,910 (53.7%)	-5.3
Weekday	2,784	2,508	-9.9
All	5,858	5,418	-7.5
Croydon			
	Average baseline	Post implementation	% Change
Weekend	2,271 (46.6%)	2,418 (49.2%)	6.5
Weekday	2,599	2,490	-4.2
All	4,870	4,908	0.8
Guildford			
	Average baseline	Post implementation	% Change
Weekend	1,110 (49.7%)	1,137 (51.3%)	2.4
Weekday	1,120	1,078	-3.8
All	2,230	2,215	-0.7
Nottingham			
	Average baseline	Post implementation	% Change
Weekend	5,901 (46.6%)	5,390 (48.0%)	-8.6
Weekday	6,741	5,820	-13.7
All	12,642	11,210	-11.3

Notes: Figure in brackets is the percentage of all offences occurring at weekends.

## Calls for disorder

**Table 3: Calls for disorder annual incident counts by entire case study area (all time periods, weekday and weekend incidents)**

Birmingham			
	Average baseline	Post implementation	% Change
Weekend	5,191 (53.9%)	4,337 (53.2%)	-16.5
Weekday	4,428	3,813	-13.9
All	9,619	8,150	-15.3
Blackpool			
	Average baseline	Post implementation	% Change
Weekend	10,510 (51.1%)	10,634 (52.4%)	1.2
Weekday	10,044	9,635	-4.1
All	20,554	20,269	-1.4
Croydon			
	Average baseline	Post implementation	% Change
Weekend	6,320 (52.3%)	6,010 (52.2%)	-4.9
Weekday	5,750	5,484	-4.6
All	12,070	11,494	-4.8
Guildford			
	Average baseline	Post implementation	% Change
Weekend	2,501 (50.5%)	2,670 (53.4%)	6.8
Weekday	2,447	2,326	-4.9
All	4,948	4,996	1.0
Nottingham <sup>1</sup>			
	Average baseline	Post implementation	% Change
Weekend	1,552 (51.5%)	1,518 (51.2%)	-2.2
Weekday	1,459	1,443	-1.1
All	3,011	2,961	-1.7

<sup>1</sup> Based on 8 months data.

Notes: Figure in brackets the percentage of all incidents occurring at weekends.